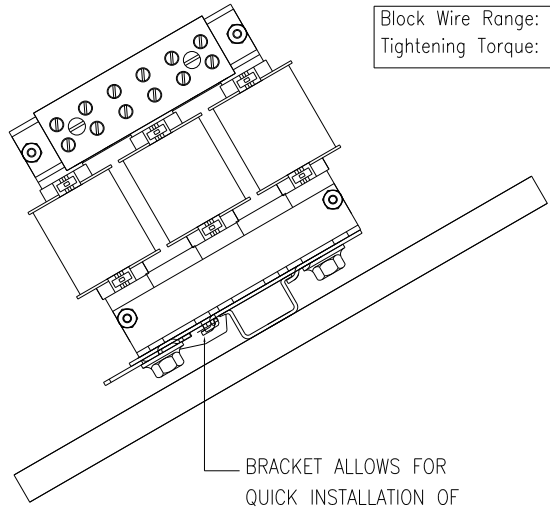
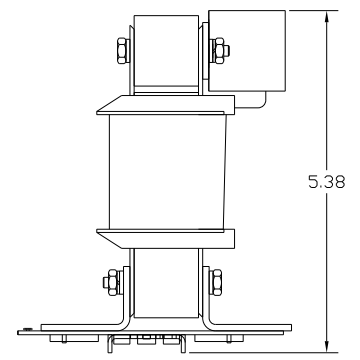
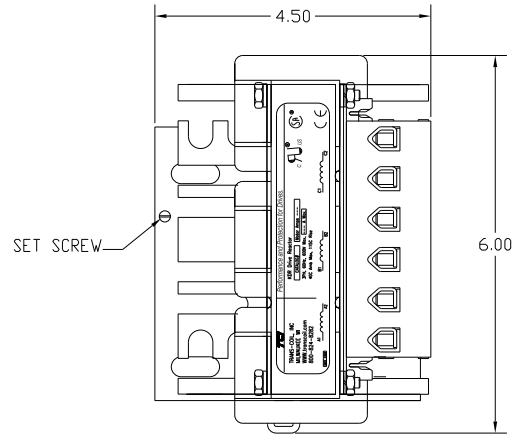


Block Wire Range: #18 to #4 AWG Solid or Stranded, Copper
 Tightening Torque: 20 LB-IN



BRACKET ALLOWS FOR QUICK INSTALLATION OF REACTOR ON DIN RAIL.



TCI Performance and Protection for Drives.

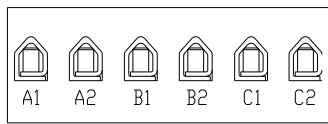
TRANS-COIL, INC
 MILWAUKEE WI
 WWW.transcoil.com
 800-824-8282

KDR Drive Reactor
 CATALOG# [Motor Amps ---]
 3PH, 60Hz, 600V Max. [--- A Max.]
 40C Amb. Max. 115C Rise

A1 A2 B1 B2 C1 C2

UL US SP CE

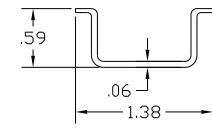
NOTE: A1, A2, B1, B2, C1, C2, MARKINGS ON TERMINAL BLOCK FOR REFERENCE ONLY.



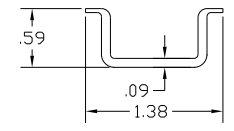
CATALOG NO	VOLTAGE	NEC MOTOR HP	NEC MOTOR CURRENT	WATTS LOSS	APPROX. WEIGHT-LBS	TORQUE (LB-IN)
KDRB44HDR	575/600	15	17	73	8	20

NEC MOTOR CURRENTS SHOWN IN THE 208/240 VOLT CHART ARE BASED ON HORSE POWERS AT 208 VOLT. 575/600 VOLT CHART USE THE 575 VOLT CURRENT RATING.

TCI'S DIN RAIL MOUNTED REACTORS FIT STANDARD SIZE DIN RAIL. TCI RECOMMENDS USING HIGH PROFILE STANDARD STEEL RAIL OR HEAVY DUTY STANDARD STEEL DIN RAIL.



STANDARD STEEL HIGH PROFILE DIN RAIL.



HEAVY DUTY STEEL DIN RAIL.

TCI RECOMMENDS TAKING PRECAUTIONS WHEN SHIPPING MOUNTED REACTORS.

				TOLERANCES EXCEPT AS NOTED:		7878 N. 86th STREET MILWAUKEE, WI 53224	
				XX ± .03		KDR B FRAME DINRAIL REACTOR	
				.XXX ± .01			
				FRACTIONAL ± 1/32			
				DECIMAL ± 1/2"		DESIGNED BY DSJ DATE 11/29/11 CHECKED BY NONE APPROVED BY DJ	
NO.	REVISION	DATE	BY			KDRB44HDRDG SH1.1 OF1	