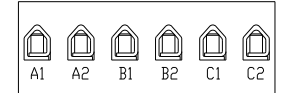
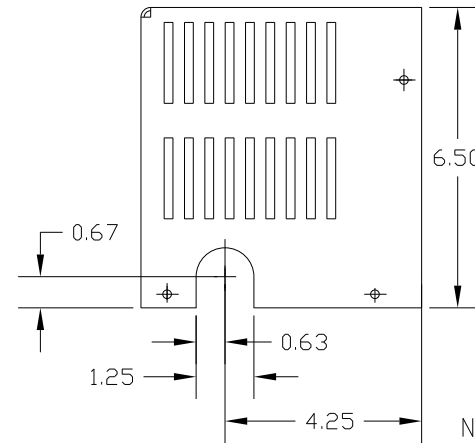
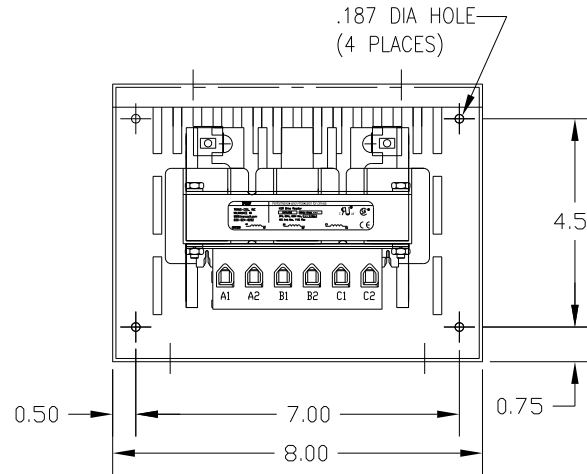
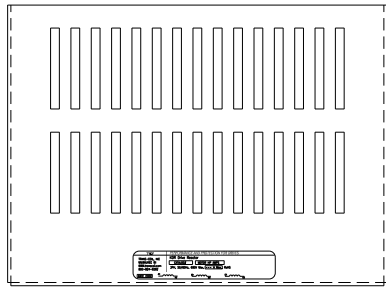
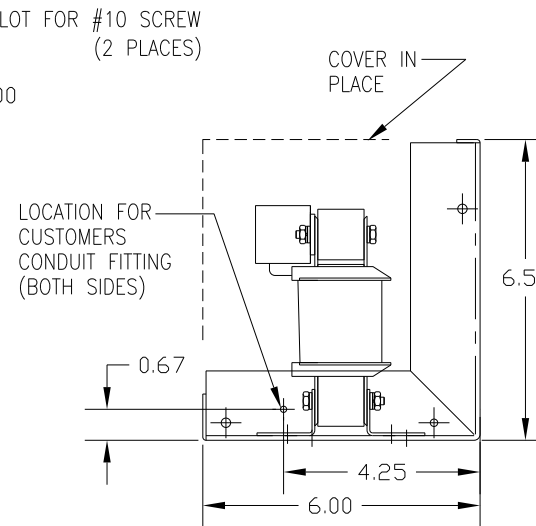
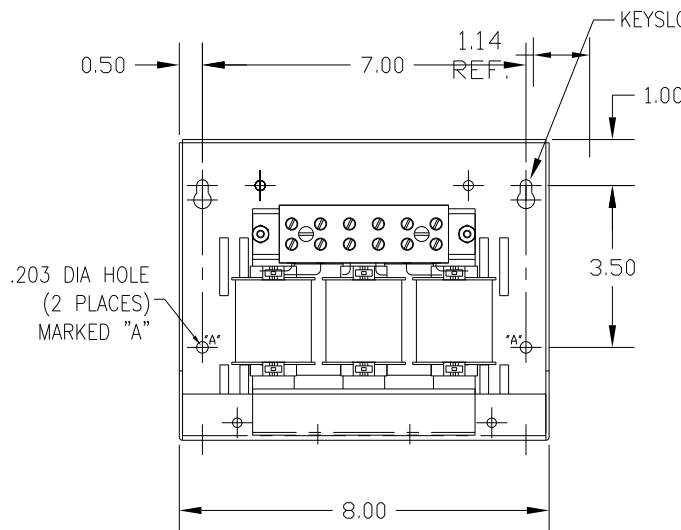
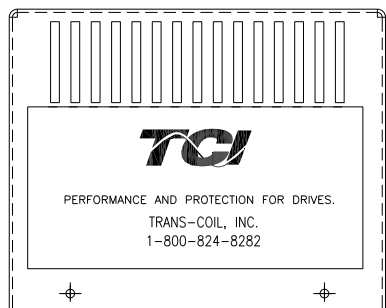


CATALOG NO	VOLTAGE	NEC MOTOR HP	NEC MOTOR CURRENT	WATTS LOSS	APPROX. WEIGHT-LBS	TERMINAL BLOCK TORQUE: (LB-IN)
KDRB26HC1	208/240	7.5	24.2	66.5	12	20

NEC MOTOR CURRENTS SHOWN IN THE 208/240 VOLT CHART ARE BASED ON HORSE POWERS AT 208 VOLT. 575/600 VOLT CHART USE THE 575 VOLT CURRENT RATING.



NOTE: A1, A2, B1, B2, C1, C2, MARKINGS ON TERMINAL BLOCK FOR REFERENCE ONLY.



CUSTOMER IS RESPONSIBLE FOR INSTALLATION TO MEET ALL NATIONAL AND LOCAL ELECTRICAL CODES.

NO	REVISION	DATE	BY	TOLERANCES (EXCEPT AS NOTED)	DECIMAL	FRANGULAR	SCALE	APRVD.	DATE	DWG. NO.	SHT. 1 OF 1
				.XX ± .03	.XXX ± .01	± 1/32			1/26/12	B	KDRB26HC1DG
				± 1/2°							

TCI 7878 N. 86th STREET MILWAUKEE, WI 53224

KDR DRIVE REACTOR
240V HIGH Z, FRAME B

DWG. NO. B KDRB26HC1DG
SHT. 1 OF 1