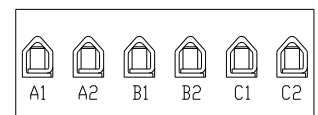
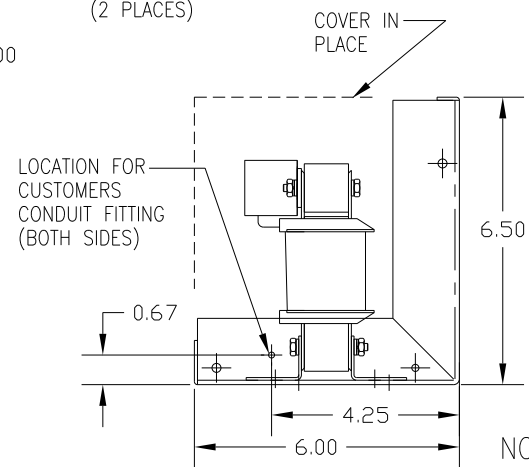
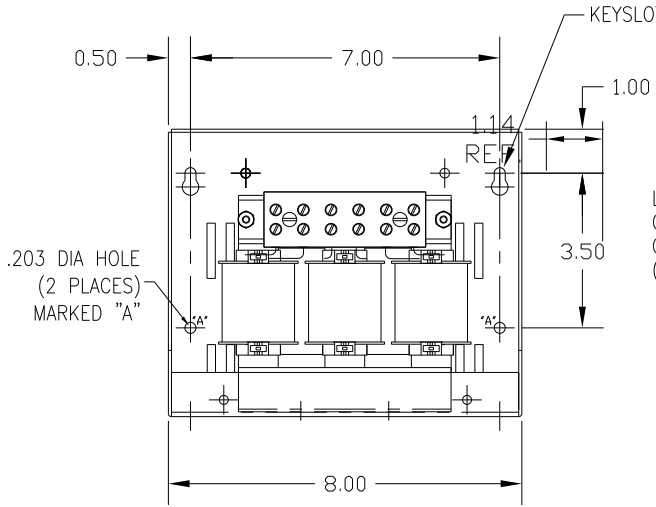
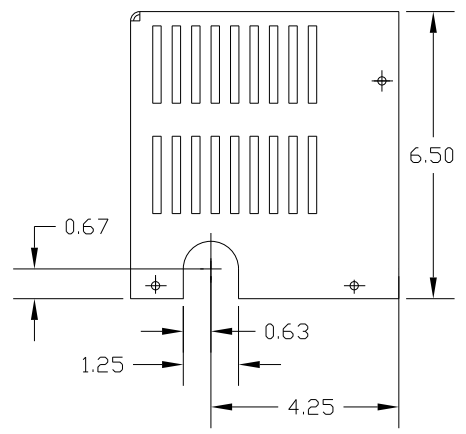
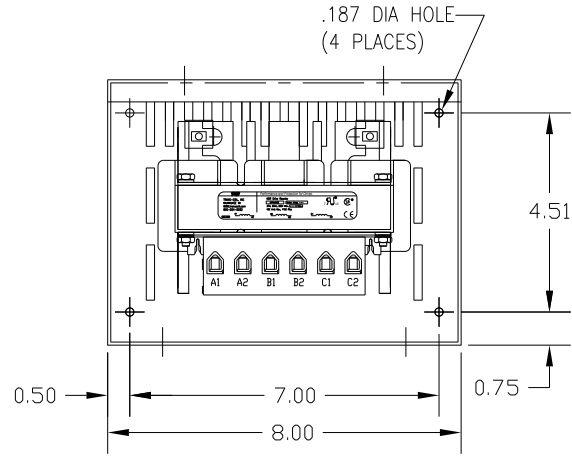
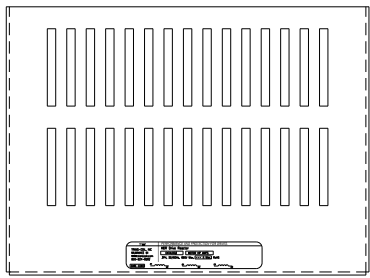


| CATALOG NO | VOLTAGE | NEC MOTOR HP | NEC MOTOR CURRENT | WATTS LOSS | APPROX. WEIGHT-LBS | TERMINAL BLOCK TORQUE: (LB-IN) |
|------------|---------|--------------|-------------------|------------|--------------------|--------------------------------|
| KDRB25HC1 | 208/240 | 5.0 | 16.7 | 53.1 | 12 | 20 |

NEC MOTOR CURRENTS SHOWN IN THE 208/240 VOLT CHART ARE BASED ON HORSE POWERS AT 208 VOLT. 575/600 VOLT CHART USE THE 575 VOLT CURRENT RATING.



NOTE: A1, A2, B1, B2, C1, C2, MARKINGS ON TERMINAL BLOCK FOR REFERENCE ONLY.

CUSTOMER IS RESPONSIBLE FOR INSTALLATION TO MEET ALL NATIONAL AND LOCAL ELECTRICAL CODES.

| | | | | | | | |
|----|----------|------|----|------------------------------|--|---|--|
| | | | | TOLERANCES (EXCEPT AS NOTED) | | 7878 N. 86th STREET MILWAUKEE, WI 53224 | |
| | | | | DECIMAL | | | |
| | | | | .XX ± .03 | | KDR DRIVE REACTOR 240V HIGH Z, FRAME B | |
| | | | | .XXX ± .01 | | | |
| | | | | FRACTIONAL | | DRN BY DSW DATE 1/26/12 DWG NO. B | |
| | | | | ± 1/32 | | KDRB25HC1DG | |
| | | | | ANGULAR | | SCALE | |
| | | | | ± 1/2° | | APRVD. B | |
| NO | REVISION | DATE | BY | | | SHT. 1 OF 1 | |