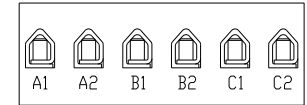
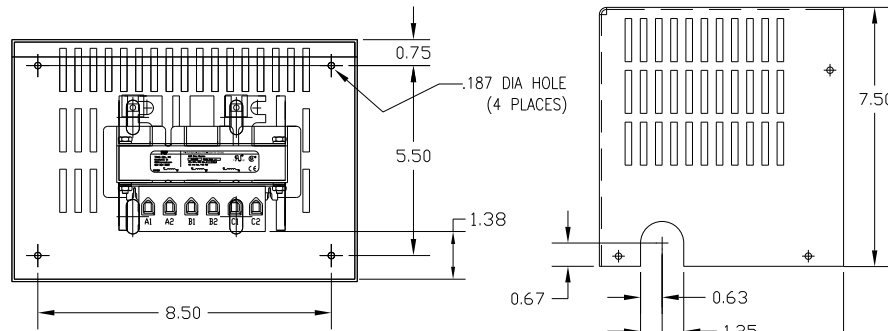
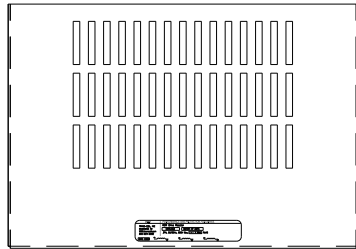
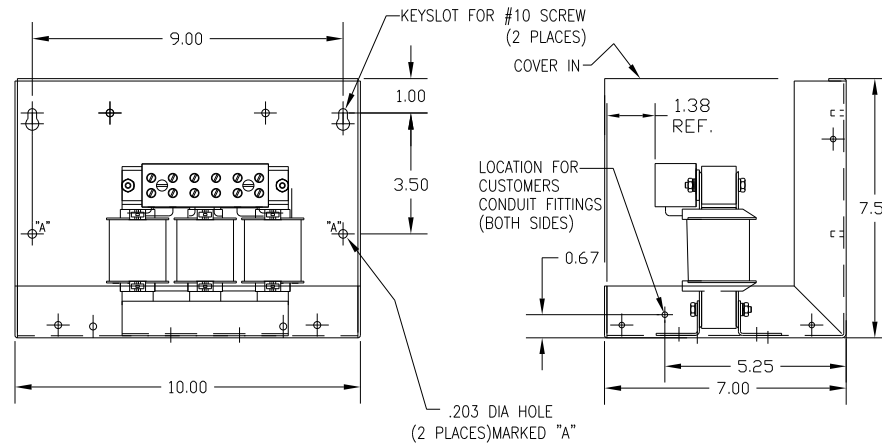
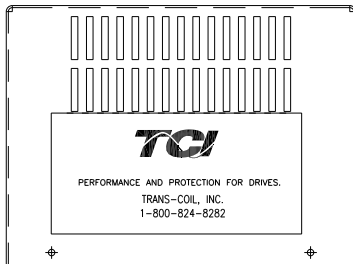


CATALOG NO	VOLTAGE	NEC MOTOR HP	NEC MOTOR CURRENT	WATTS LOSS	APPROX WT-LBS	TORQUE (LB-IN)
KDRB23LC2	208/240	7.5	24.2	48	16	20

NEC MOTOR CURRENTS SHOWN IN THE 208/240 VOLT CHART ARE BASED ON HORSE POWERS AT 208 VOLT. 575/600 VOLT CHART USE THE 575 VOLT CURRENT RATING.



NOTE: A1, A2, B1, B2, C1, C2, MARKINGS ON TERMINAL BLOCK FOR REFERENCE ONLY.



Block Wire Range: #18 to #4 AWG Solid or Stranded, Copper  
Tightening Torque: 20 LB-IN

CUSTOMER IS RESPONSIBLE FOR INSTALLATION TO MEET ALL NATIONAL AND LOCAL ELECTRICAL CODES.

NO	REVISION	DATE	BY	TOLERANCES (EXCEPT AS NOTED) DECIMAL .XX ± .03 .XXX ± .01 FRACTIONAL ± 1/32 ANGULAR ± 1/2°	DRN. BY DSW	DATE 2/13/12	APRVD.	DWG. NO. B	KDRB23LC2DG
									SHT. 1 OF 1

**TCI** 7878 N. 86th STREET  
MILWAUKEE, WI 53224

KDR DRIVE REACTOR, ENCLOSED  
240V LOW Z, FRAME B