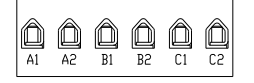
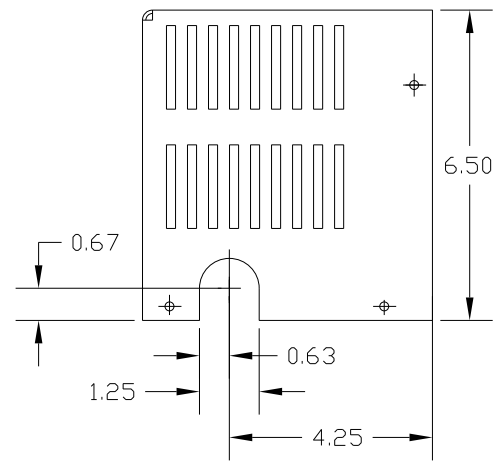
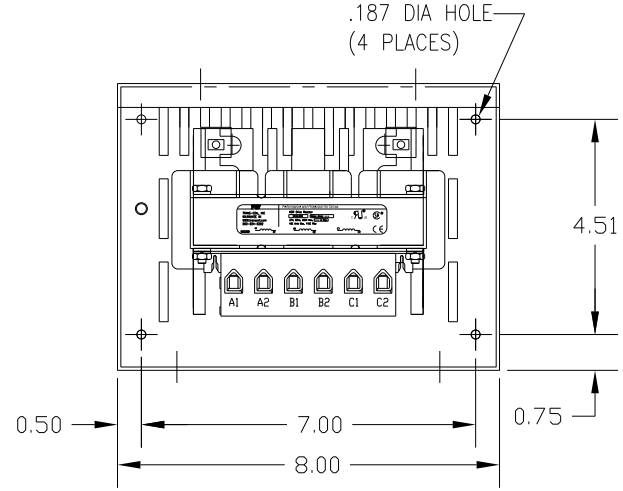
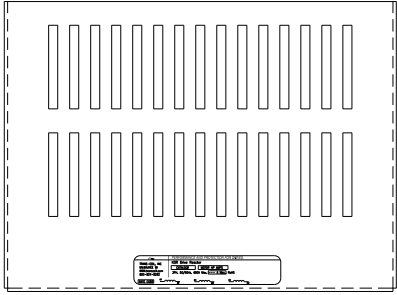


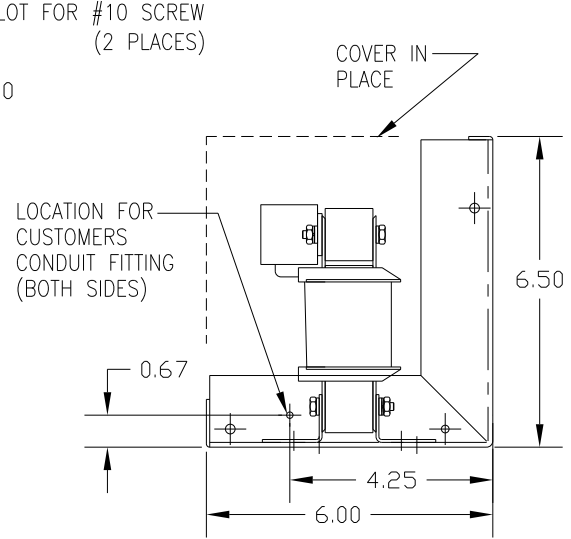
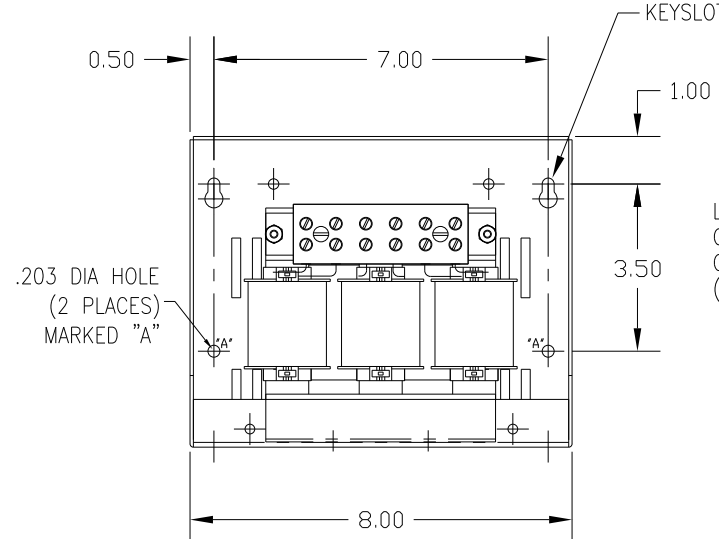
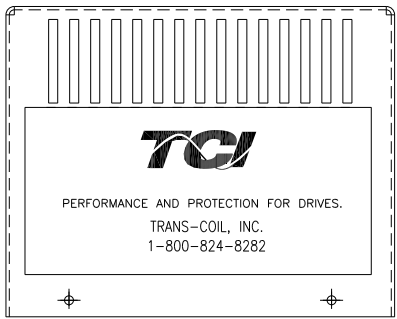
CATALOG NO	VOLTAGE	NEC MOTOR HP	NEC MOTOR CURRENT	WATTS LOSS	APPROX. WEIGHT-LBS	TERMINAL BLOCK TORQUE: (LB-IN)
KDRB22LC1	208/240	5.0	16.7	48	12	20

NEC MOTOR CURRENTS SHOWN IN THE 208/240 VOLT CHART ARE BASED ON HORSE POWERS AT 208 VOLT. 575/600 VOLT CHART USE THE 575 VOLT CURRENT RATING.



TERMINAL BLOCK MARKING

NOTE: A1, A2, B1, B2, C1, C2, MARKINGS ON TERMINAL BLOCK FOR REFERENCE ONLY.



CUSTOMER IS RESPONSIBLE FOR INSTALLATION TO MEET ALL NATIONAL AND LOCAL ELECTRICAL CODES.

NO	REVISION	DATE	BY	TOLERANCES (EXCEPT AS NOTED)	DECIMAL	XX ± .03	.XXX ± .01	FRACTIONAL ± 1/32	ANGULAR ± 1/2°	SCALE	APRVD.	DATE	DWG. NO.	SHT. 1 OF 1
												1/26/12	B	KDRB22LC1DG

**TCI** 7878 N. 86th STREET MILWAUKEE, WI 53224

**KDR DRIVE REACTOR 240V LOW Z, FRAME B**