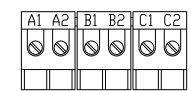
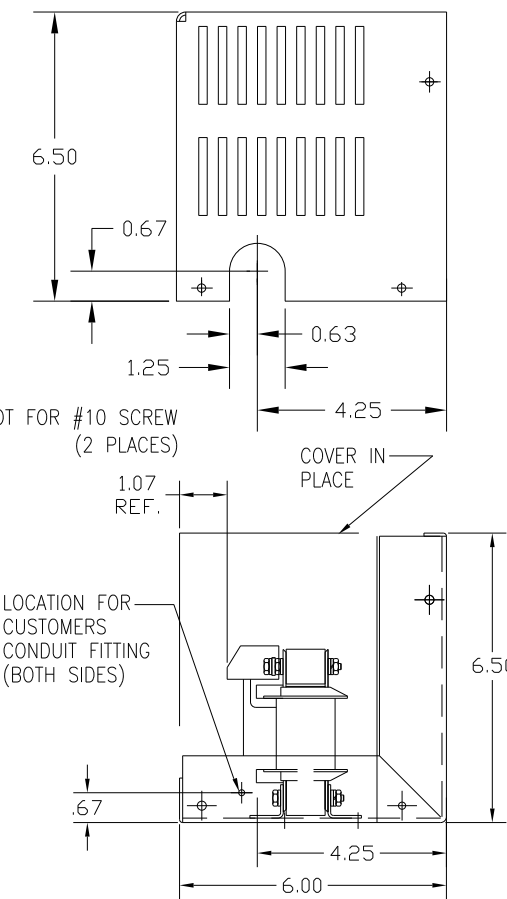
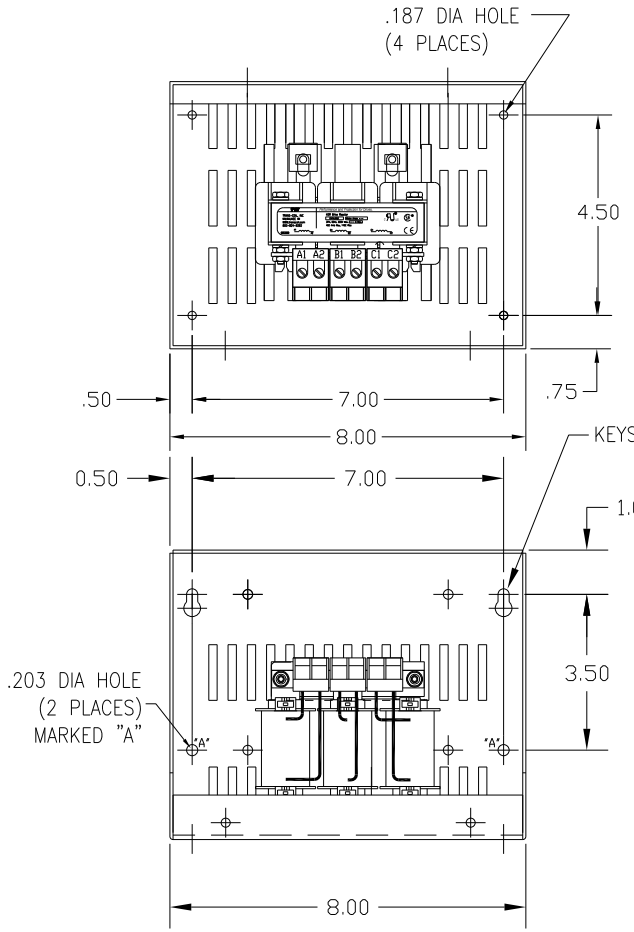
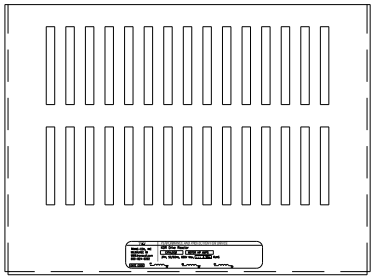


CATALOG NO	VOLTAGE	NEC MOTOR HP	NEC MOTOR CURRENT	WATTS LOSS	APPROX WT-LBS	TORQUE (LB-IN)
KDRA9HC1	480	1.5	3.0	23	7	10



NOTE: A1, A2, B1, B2, C1, C2, MARKINGS ON TERMINAL BLOCK FOR REFERENCE ONLY.

BLOCK WIRE RANGE #12-#18 AWG
FOR REACTOR AND TIGHTENING TORQUE. 10 LB-IN

CUSTOMER IS RESPONSIBLE FOR INSTALLATION TO MEET ALL NATIONAL AND LOCAL ELECTRICAL CODES.

				TOLERANCES (EXCEPT AS NOTED)		7878 N. 86th STREET MILWAUKEE, WI 53224	
				DECIMAL			
				.XX ± .03		KDR DRIVE REACTOR 480V HIGH Z, FRAME A	
				.XXX ± .01			
				FRACTIONAL		DRN. BY DSW DATE 1/25/12 DWG. NO. KDRA9HC1DG	
				± 1/32		SCALE	
				ANGULAR		APPRV. B	
				± 1/2°		SHT. 1 OF 1	
NO	REVISION	DATE	BY				