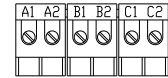
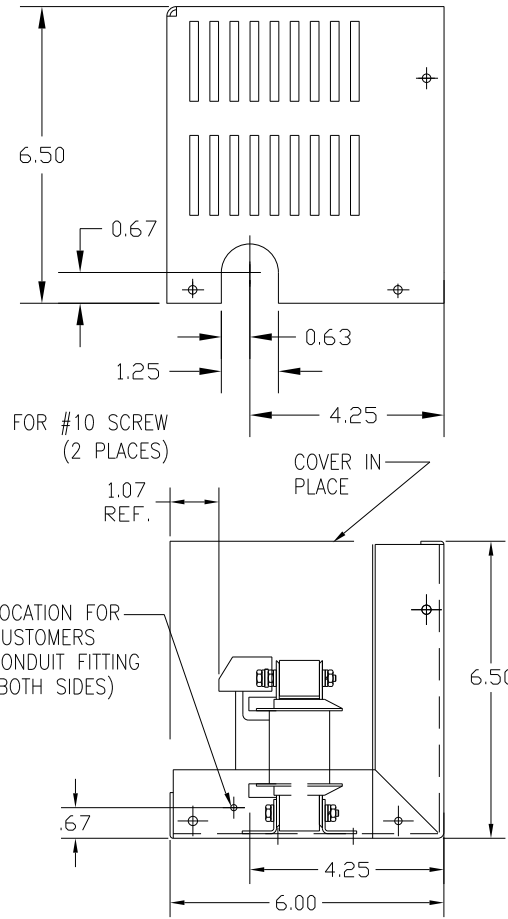
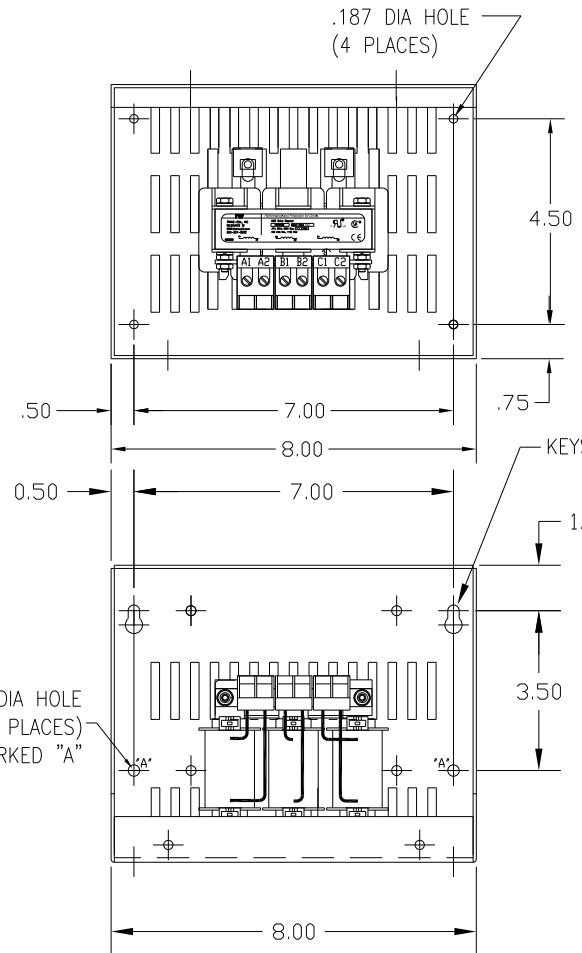
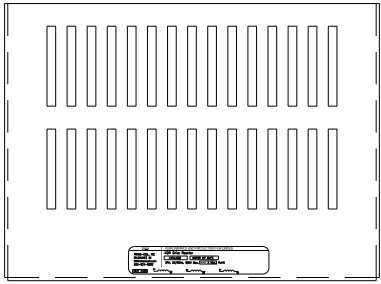


CATALOG NO	VOLTAGE	NEC MOTOR HP	NEC MOTOR CURRENT	WATTS LOSS	APPROX WT-LBS	TORQUE (LB-IN)
KDRA8LC1	480	1.0	2.1	10.4	7	10



NOTE: A1, A2, B1, B2, C1, C2, MARKINGS ON TERMINAL BLOCK FOR REFERENCE ONLY.

BLOCK WIRE RANGE FOR REACTOR AND TIGHTENING TORQUE. #12-#18 AWG 10 LB-IN

CUSTOMER IS RESPONSIBLE FOR INSTALLATION TO MEET ALL NATIONAL AND LOCAL ELECTRICAL CODES.

				TOLERANCES (EXCEPT AS NOTED):		<b>7878 N. 86th STREET MILWAUKEE, WI 53224</b>	
				DECIMAL			
				.XX ± .03 .XXX ± .01			
				FRACTIONAL ± 1/32			
				ANGULAR		DRN. BY <b>DSW</b> DATE <b>1/25/12</b> DWG. NO. <b>KDRA8LC1DG</b>	
				± 1/2°		SCALE <b>B</b> APPRV. <b>B</b>	
NO	REVISION	DATE	BY	SHT. 1 OF 1			