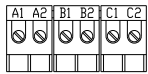
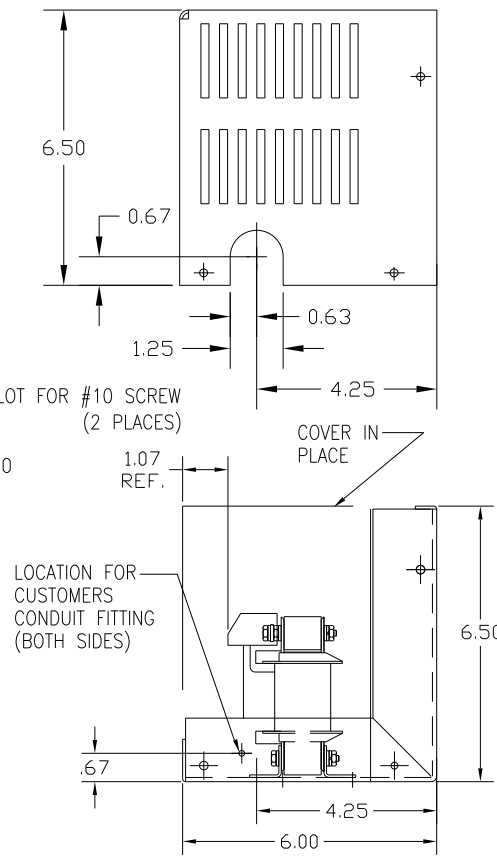
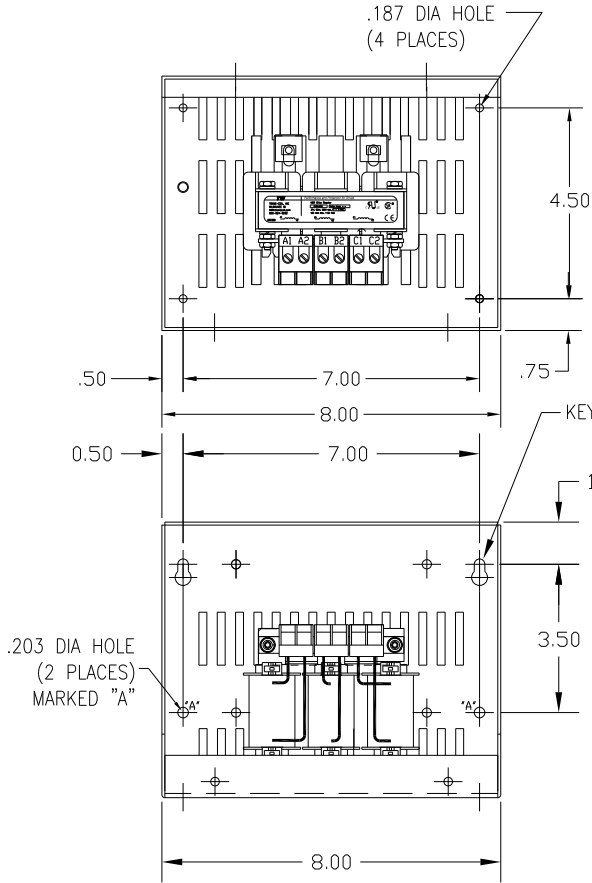
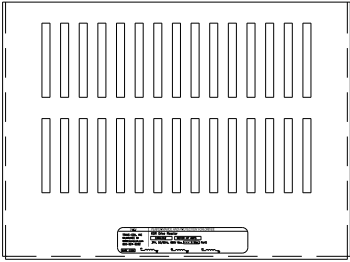


CATALOG NO	VOLTAGE	NEC MOTOR HP	NEC MOTOR CURRENT	WATTS LOSS	APPROX WT-LBS	TORQUE (LB-IN)
KDRA5LC1	480	10.0	14.0	64.0	8	10



NOTE: A1, A2, B1, B2, C1, C2, MARKINGS ON TERMINAL BLOCK FOR REFERENCE ONLY.

BLOCK WIRE RANGE #12-#18 AWG FOR REACTOR AND TIGHTENING TORQUE. 10 LB-IN

CUSTOMER IS RESPONSIBLE FOR INSTALLATION TO MEET ALL NATIONAL AND LOCAL ELECTRICAL CODES.

NO	REVISION	DATE	BY

		7878 N. 86th STREET MILWAUKEE, WI 53224
KDR DRIVE REACTOR 480V LOW Z, FRAME A		
DRN BY: DSW SCALE:	DATE: 1/25/12 APPRVD:	DWG. NO: B KDR A5LC1DG SHT. 1 OF 1