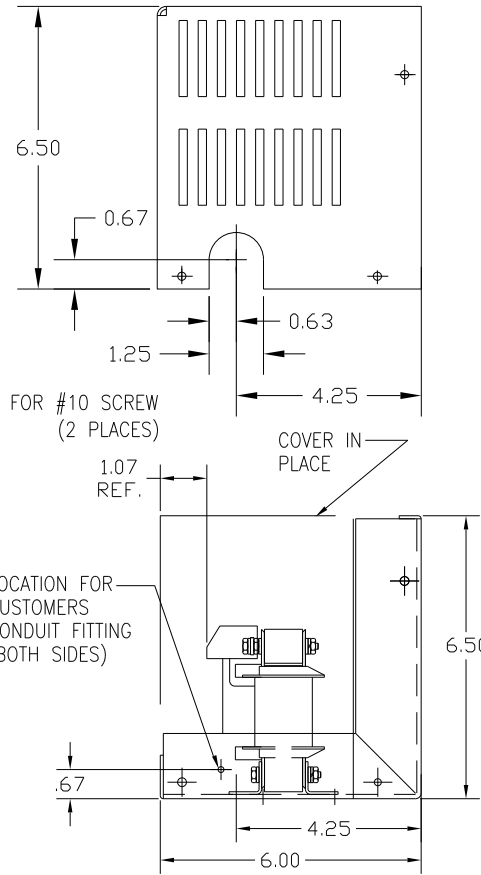
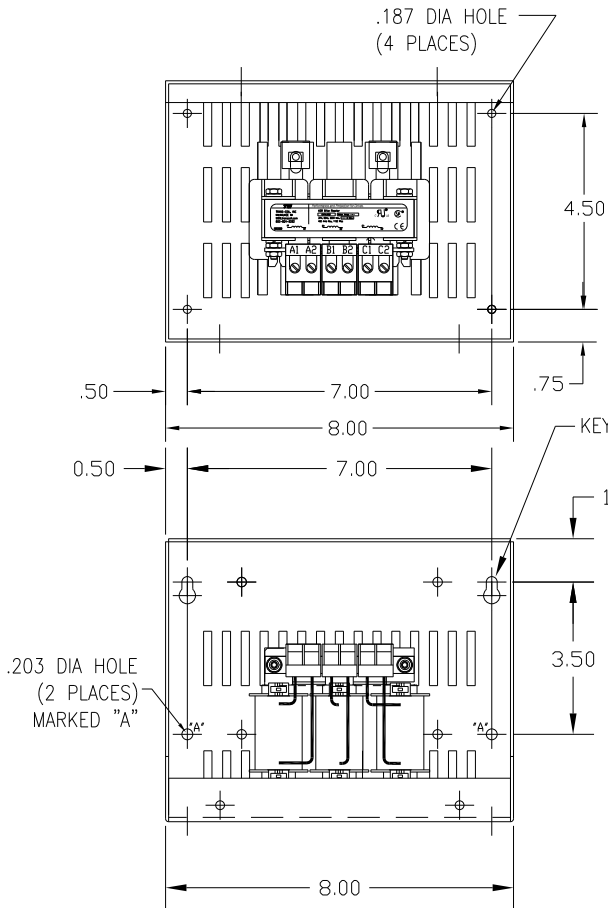
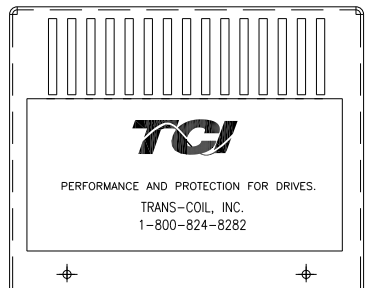
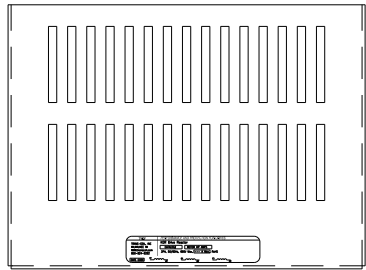
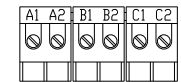


CATALOG NO	VOLTAGE	NEC MOTOR HP	NEC MOTOR CURRENT	WATTS LOSS	APPROX WT-LBS	TORQUE (LB-IN)
KDRA56LC1	575/600	0.75	1.30	9.3	8	10

NEC MOTOR CURRENTS SHOWN IN THE 575/600 VOLT CHART ARE BASED ON HORSE POWERS AT 575 VOLT.



BLOCK WIRE RANGE #12-#18 AWG FOR REACTOR AND TIGHTENING TORQUE. 10 LB-IN



NOTE: A1, A2, B1, B2, C1, C2, MARKINGS ON TERMINAL BLOCK FOR REFERENCE ONLY.

CUSTOMER IS RESPONSIBLE FOR INSTALLATION TO MEET ALL NATIONAL AND LOCAL ELECTRICAL CODES.

				TOLERANCES (EXCEPT AS NOTED):		7878 N. 86th STREET MILWAUKEE, WI 53224 KDR DRIVE REACTOR, ENCLOSED 600V LOW Z, FRAME A		
				DECIMAL				
				.XX ± .03				
				.XXX ± .01				
				FRACTIONAL				
				± 1/32		DRN. BY DSW	DATE 1/25/12	DWG. NO. B
NO	REVISION	DATE	BY	ANGULAR	SCALE	APRVD.	KDRA56LC1DG	
				± 1/2°		SHT. 1 of 1		