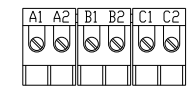
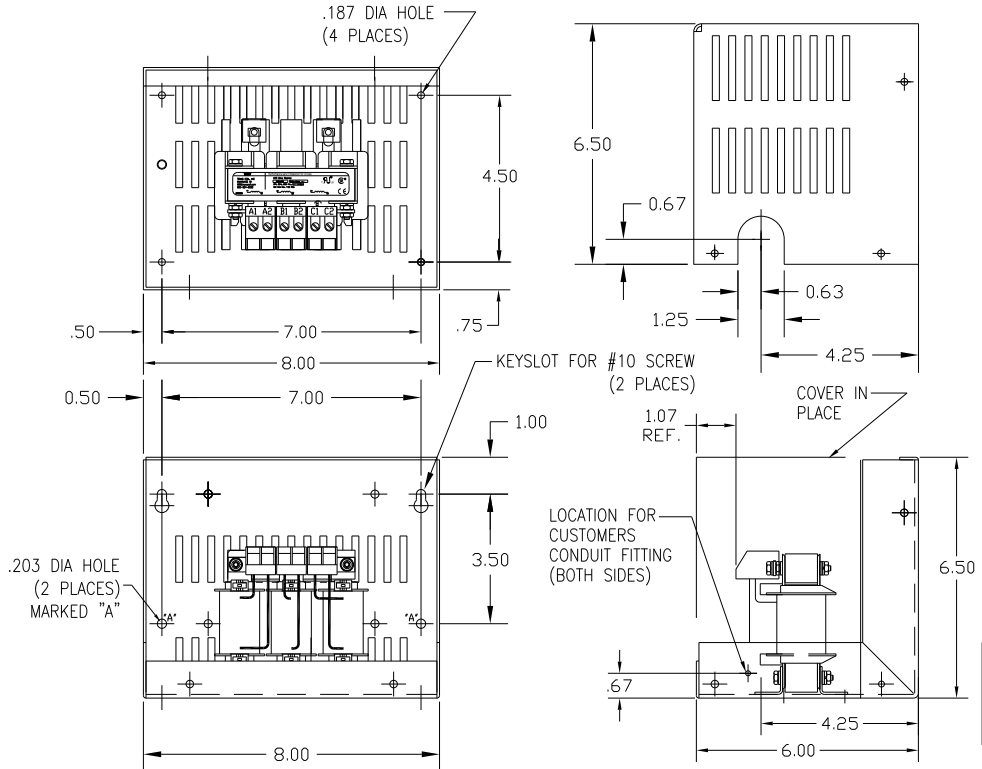
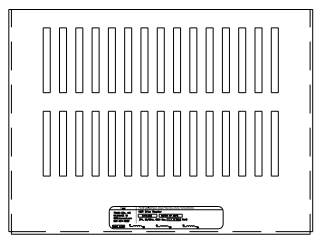


CATALOG NO	VOLTAGE	NEC MOTOR HP	NEC MOTOR CURRENT	WATTS LOSS	APPROX WT-LBS	TORQUE (LB-IN)
KDRA54HC1	208/240	0.5	2.40	14	8	10


NOTE: NEC MOTOR CURRENT SHOWN ARE BASED ON HORSEPOWER AT 208 VOLTS.



NOTE: A1, A2, B1, B2, C1, C2, MARKINGS ON TERMINAL BLOCK FOR REFERENCE ONLY.

BLOCK WIRE RANGE #12-#18 AWG FOR REACTOR AND TIGHTENING TORQUE. 10 LB-IN

CUSTOMER IS RESPONSIBLE FOR INSTALLATION TO MEET ALL NATIONAL AND LOCAL ELECTRICAL CODES.

				TOLERANCES (EXCEPT AS NOTED): DECIMAL		 <b>7878 N. 86th STREET MILWAUKEE, WI 53224</b>
				.XX ± .03		
				.XXX ± .01		
				FRACTIONAL ± 1/32		
NO	REVISION	DATE	BY	ANGULAR ± 1/2°	DRN. BY: DSW SCALE:	DATE: 1/25/12 APRVD:
						<b>DWG. NO. B</b> <b>KDRA54HC1DG</b> SHT.1 of 1