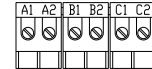


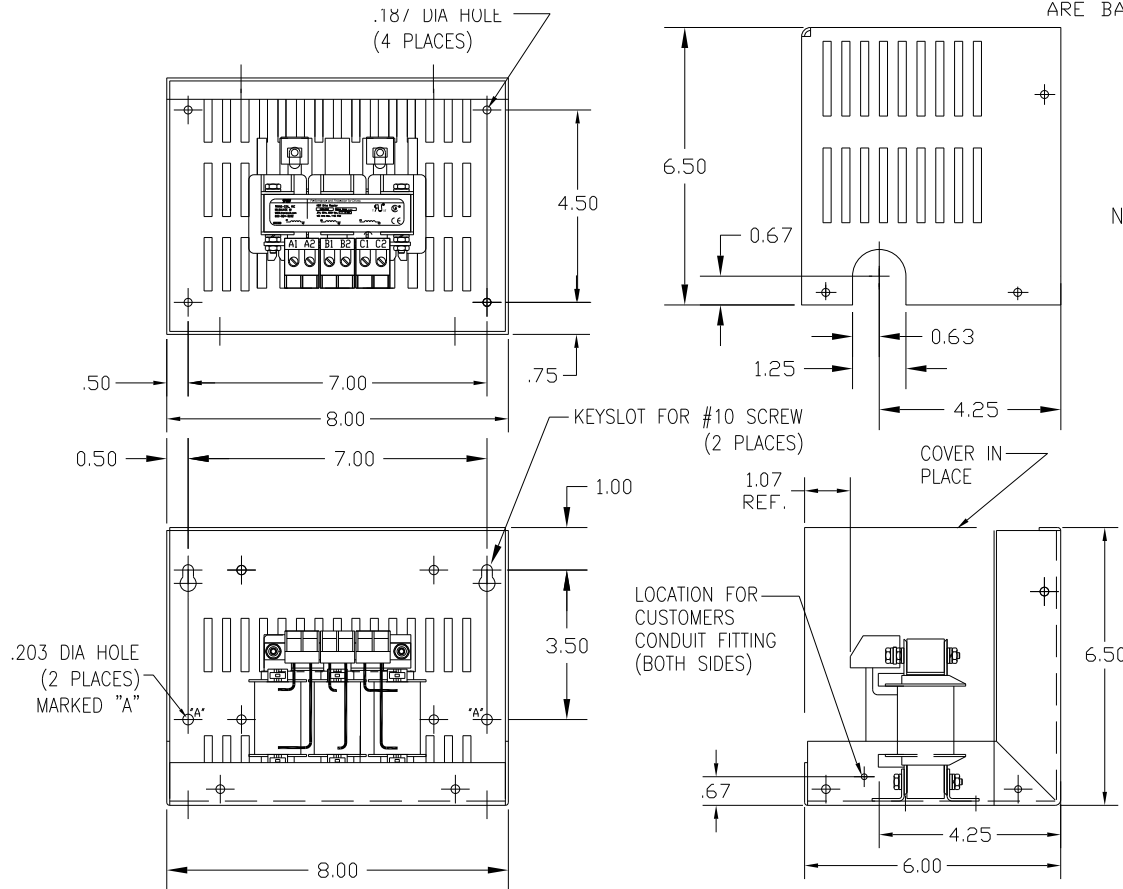
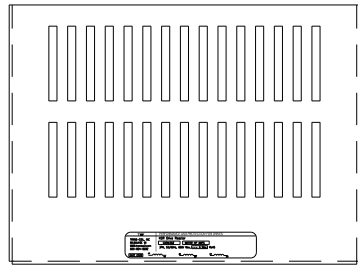
CATALOG NO	VOLTAGE	NEC MOTOR HP	NEC MOTOR CURRENT	WATTS LOSS	APPROX WT-LBS	TORQUE (LB-IN)
KDRA52HC1	575/600	0.75	1.30	13	8	10

NOTE: NEC MOTOR CURRENT SHOWN ARE BASED ON HORSEPOWER AT 575 VOLTS.

BLOCK WIRE RANGE FOR REACTOR AND TIGHTENING TORQUE.	#12-#18 AWG 10 LB-IN
---	-------------------------



NOTE: A1, A2, B1, B2, C1, C2, MARKINGS ON TERMINAL BLOCK FOR REFERENCE ONLY.



TOLERANCES (EXCEPT AS NOTED)			
DECIMAL			
.XX ± .03			
.XXX ± .01			
FRACTIONAL			
± 1/32			
ANGULAR			
± 1/2°			

TCI 7878 N. 86th STREET
MILWAUKEE, WI 53224

KDR DRIVE REACTOR
600V HIGH Z, FRAME A

DRN. BY	DSW	DATE	1/25/12	DWG. NO.	B	KDRA52HC1DG
SCALE		APPRVD.				SHT. 1 OF 1

CUSTOMER IS RESPONSIBLE FOR INSTALLATION TO MEET ALL NATIONAL AND LOCAL ELECTRICAL CODES.

NO REVISION

DATE BY