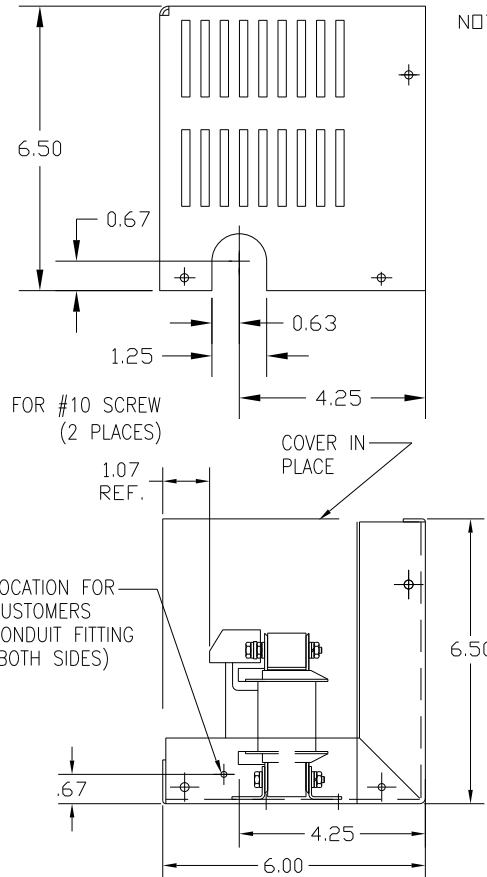
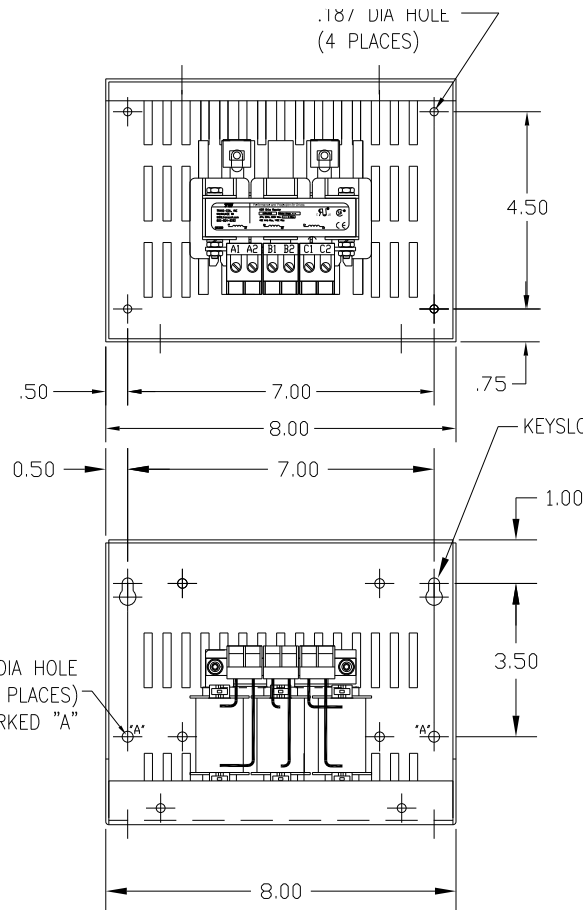
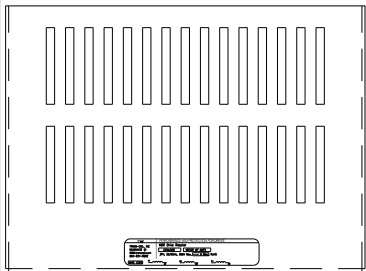
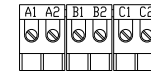


| CATALOG NO | VOLTAGE | NEC MOTOR HP | NEC MOTOR CURRENT | WATTS LOSS | APPROX WT-LBS | TORQUE (LB-IN) |
|------------|---------|--------------|-------------------|------------|---------------|----------------|
| KDRA50HC1 | 575/600 | 1.0 | 1.70 | 17 | 8 | 10 |




NOTE: NEC MOTOR CURRENT SHOWN ARE BASED ON HORSEPOWER AT 575 VOLTS.

BLOCK WIRE RANGE #12-#18 AWG
FOR REACTOR AND
TIGHTENING TORQUE: 10 LB-IN



NOTE: A1, A2, B1, B2, C1, C2, MARKINGS ON TERMINAL BLOCK FOR REFERENCE ONLY.

CUSTOMER IS RESPONSIBLE FOR INSTALLATION TO MEET ALL NATIONAL AND LOCAL ELECTRICAL CODES.

| NO | REVISION | DATE | BY | TOLERANCES (EXCEPT AS NOTED) |  7878 N. 86th STREET MILWAUKEE, WI 53224 KDR DRIVE REACTOR 600V HIGH Z, FRAME A |
|----|----------|------|----|------------------------------|---|
| | | | | DECIMAL | |
| | | | | .XX ± .03 .XXX ± .01 | |
| | | | | FRACTIONAL ± 1/32 | |
| | | | | ANGULAR ± 1/2° | DRN. BY DSW DATE 1/25/12 SCALE APRVD. |
| | | | | | DVG. NO. B KDRA50HC1DG SHT. 1 OF 1 |