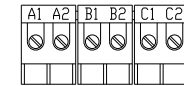


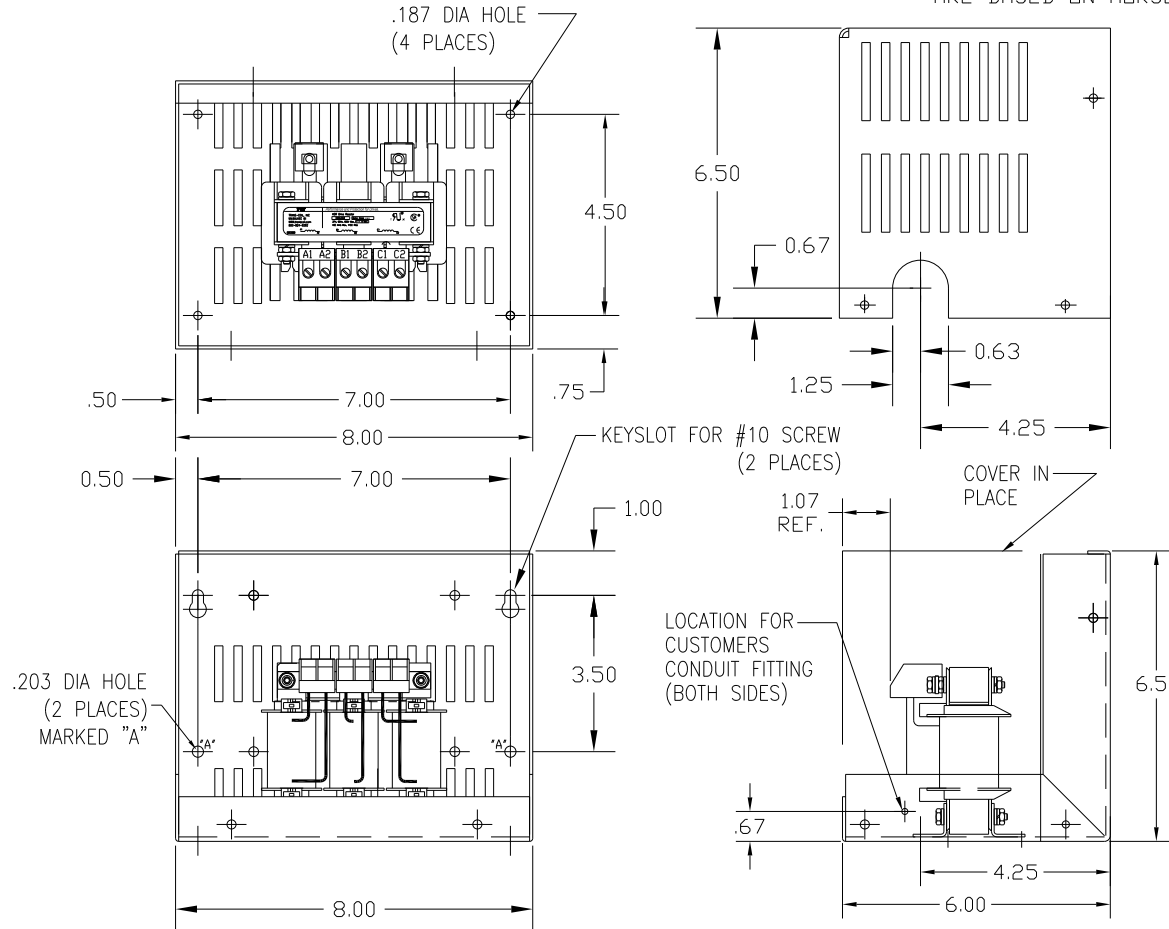
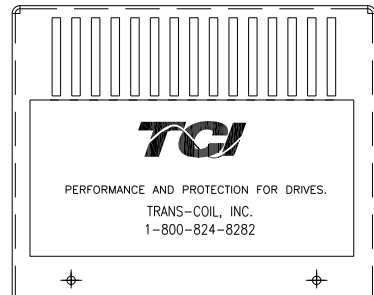
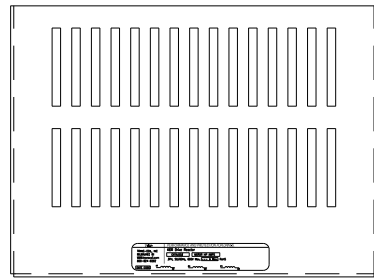
CATALOG NO	VOLTAGE	NEC MOTOR HP	NEC MOTOR CURRENT	WATTS LOSS	APPROX WT-LBS	TORQUE (LB-IN)
KDRA49LC1	575/600	10.0	11.0	43.8	8	10

NEC MOTOR CURRENTS SHOWN IN THE 575/600 VOLT CHART ARE BASED ON HORSE POWERS AT 575 VOLT.

BLOCK WIRE RANGE #12-#18 AWG FOR REACTOR AND TIGHTENING TORQUE. 10 LB-IN



NOTE: A1, A2, B1, B2, C1, C2, MARKINGS ON TERMINAL BLOCK FOR REFERENCE ONLY.



CUSTOMER IS RESPONSIBLE FOR INSTALLATION TO MEET ALL NATIONAL AND LOCAL ELECTRICAL CODES.

				TOLERANCES (EXCEPT AS NOTED): DECIMAL		 7878 N. 86th STREET MILWAUKEE, WI 53224
				.XX ± .03		
				.XXX ± .01		
				FRACTIONAL ± 1/32		
				ANGULAR ± 1/2°		DRN. BY DSW
						DATE 1/25/12
						DWG. NO. B KDRA49LC1DG
						SCALE
						APRVD.
						SHT. 1 OF 1