

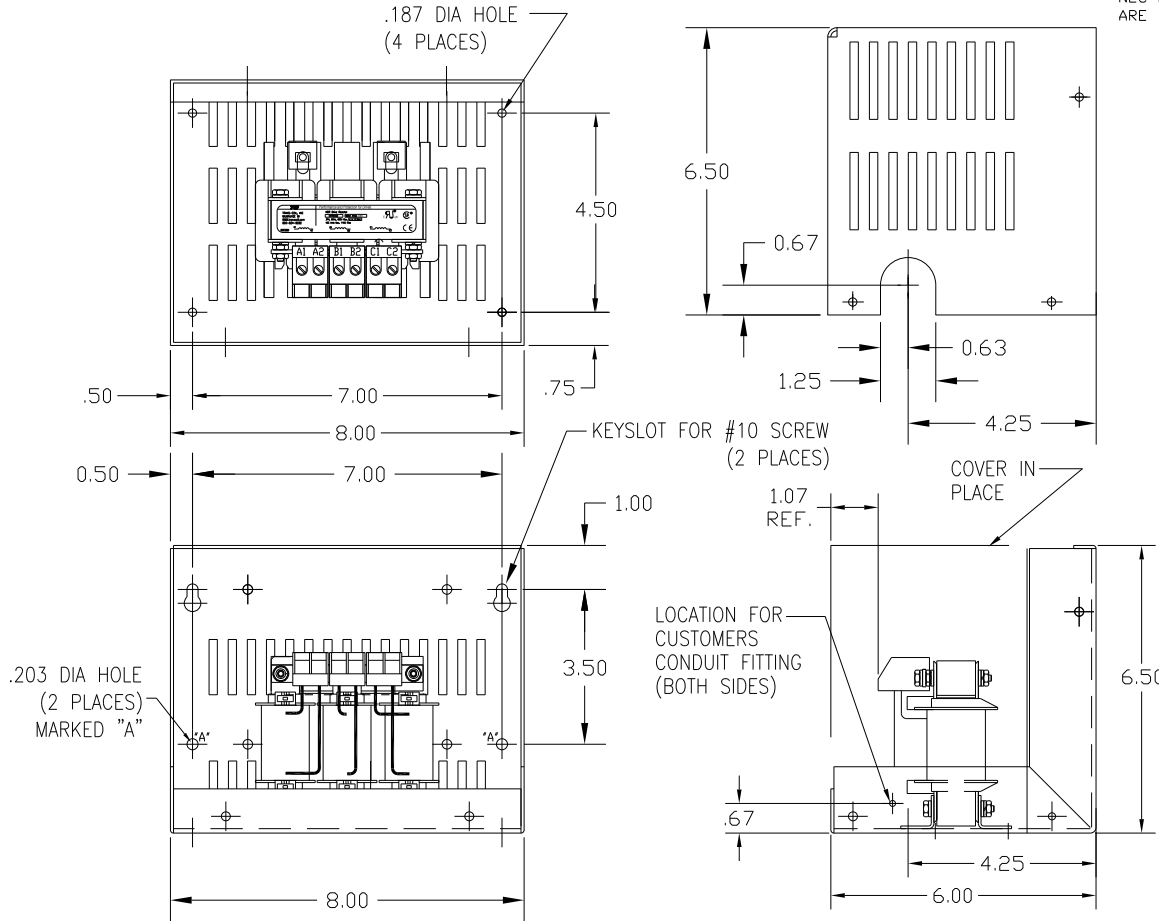
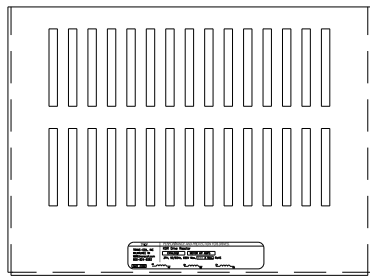
CATALOG NO	VOLTAGE	NEC MOTOR HP	NEC MOTOR CURRENT	WATTS LOSS	APPROX WT-LBS	TORQUE (LB-IN)
KDRA46LC1	575/600	2.0	2.70	22	8	10

NEC MOTOR CURRENTS SHOWN IN THE 575/600 VOLT CHART ARE BASED ON HORSE POWERS AT 575 VOLT.


BLOCK WIRE RANGE #12-#18 AWG  
FOR REACTOR AND  
TIGHTENING TORQUE. 10 LB-IN



NOTE: A1, A2, B1, B2, C1, C2,  
MARKINGS ON TERMINAL BLOCK  
FOR REFERENCE ONLY.



CUSTOMER IS RESPONSIBLE FOR INSTALLATION  
TO MEET ALL NATIONAL AND LOCAL ELECTRICAL CODES.

				TOLERANCES (EXCEPT AS NOTED)	 7878 N. 86th STREET MILWAUKEE, WI 53224
				DECIMAL	
				.XX ± .03	
				.XXX ± .01	
				FRACTIONAL ± 1/32	
				ANGULAR ± 1/2°	DRN. BY DSW    DATE 2/27/12 SCALE            APRVD.
NO	REVISION	DATE	BY		DVG. NO. B KDRA46LC1DG SHT.1 OF1