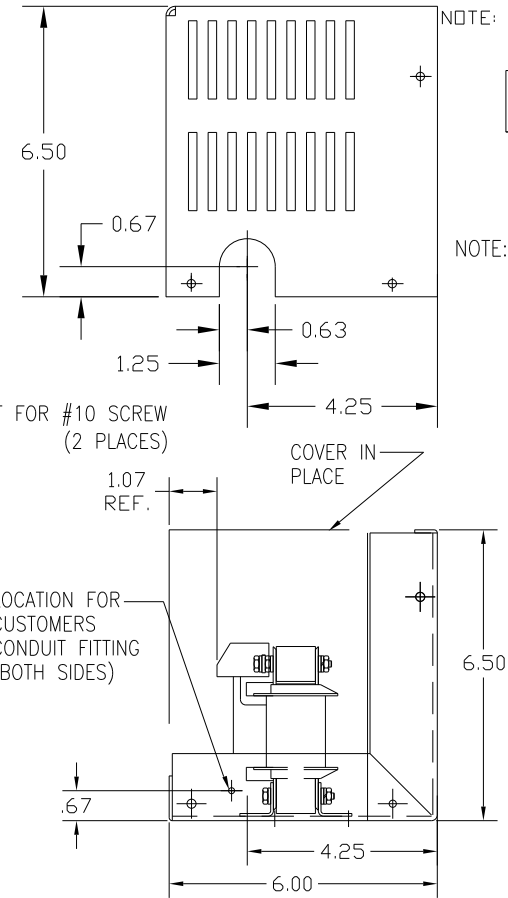
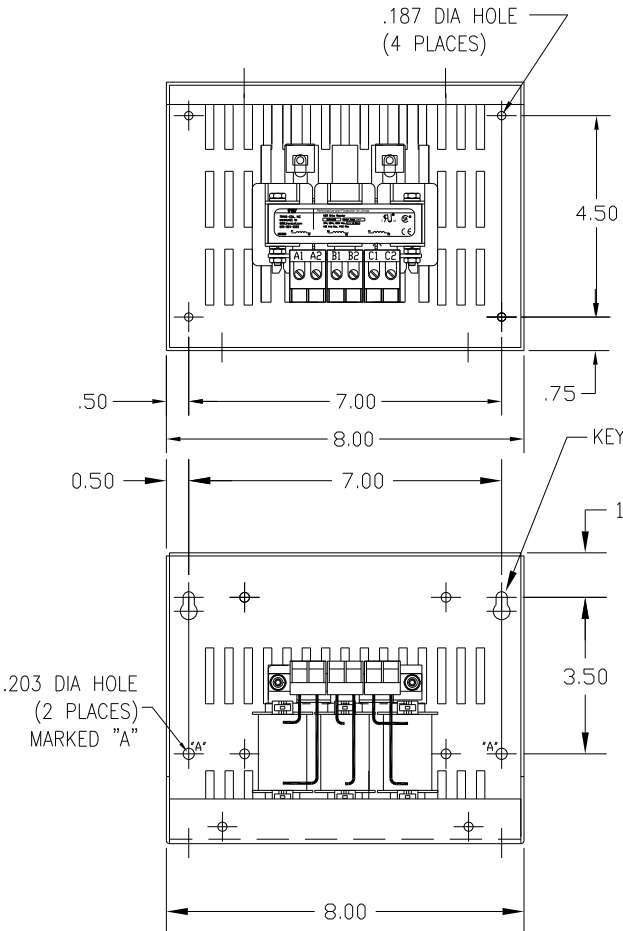
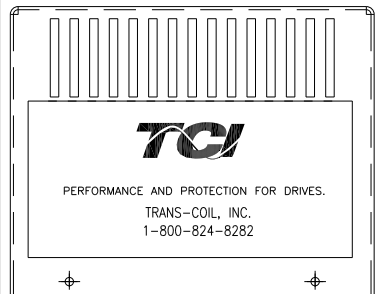
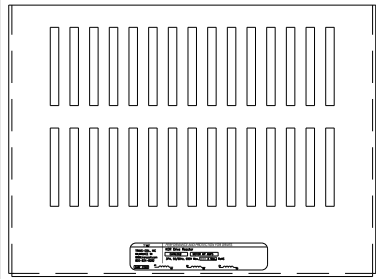
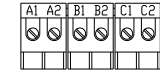


CATALOG NO	VOLTAGE	NEC MOTOR HP	NEC MOTOR CURRENT	WATTS LOSS	APPROX WT-LBS	TORQUE (LB-IN)
KDRA43HC1	575/600	2.0	2.70	24	8	10




NOTE: NEC MOTOR CURRENT SHOWN ARE BASED ON HORSEPOWER AT 575 VOLTS.

BLOCK WIRE RANGE #12-#18 AWG FOR REACTOR AND TIGHTENING TORQUE. 10 LB-IN



NOTE: A1, A2, B1, B2, C1, C2, MARKINGS ON TERMINAL BLOCK FOR REFERENCE ONLY.

CUSTOMER IS RESPONSIBLE FOR INSTALLATION TO MEET ALL NATIONAL AND LOCAL ELECTRICAL CODES.

NO	REVISION	DATE	BY	TOLERANCES (EXCEPT AS NOTED)	 7878 N. 86th STREET MILWAUKEE, WI 53224 KDR DRIVE REACTOR 600V HIGH Z, FRAME A	DRN. BY	DATE	DWG. NO.	
				DECIMAL			DSW	1/25/12	B
				.XX ± .03					
				.XXX ± .01					
				FRACTIONAL ± 1/32					
				ANGULAR ± 1/2°					
					SCALE	APPRV.			
					KDRA43HC1DG SHT.1 OF 1				