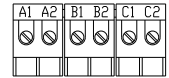
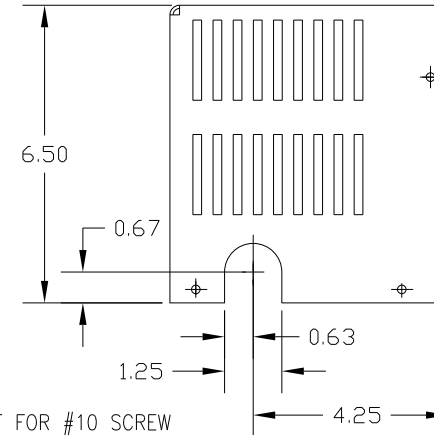
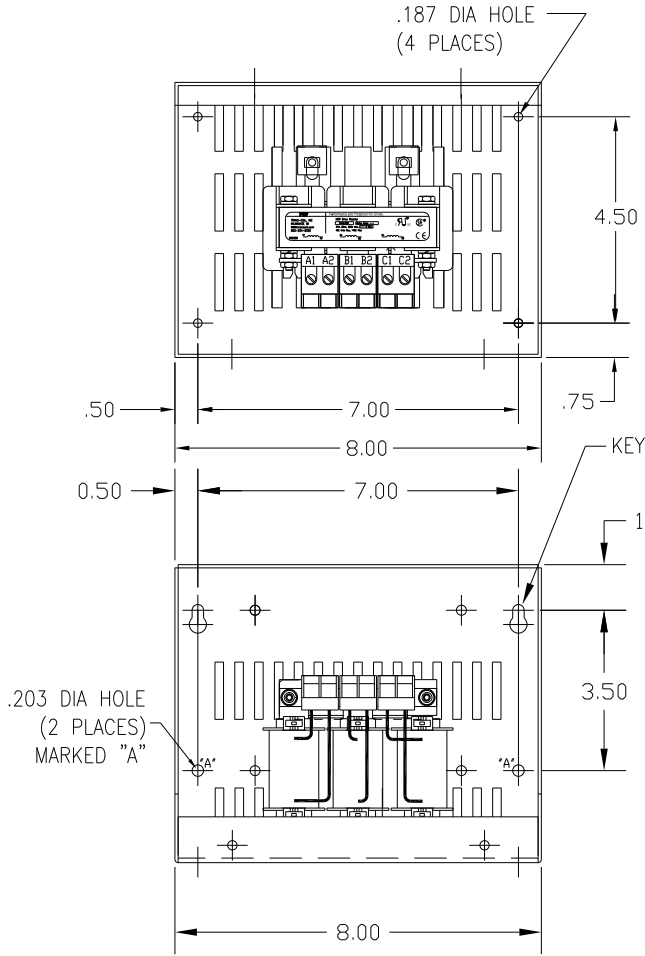
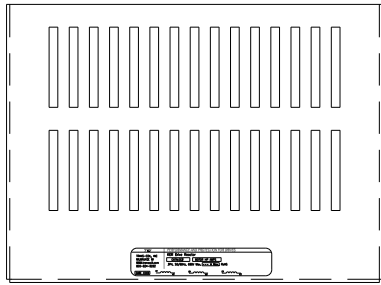
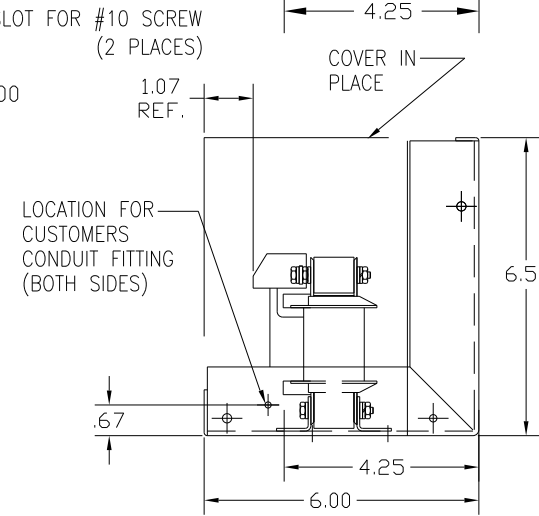


CATALOG NO	VOLTAGE	NEC MOTOR HP	NEC MOTOR CURRENT	WATTS LOSS	APPROX WT-LBS	TORQUE (LB-IN)
KDRA3LC1	480	5.0	7.6	49.0	8	10



NOTE: A1, A2, B1, B2, C1, C2, MARKINGS ON TERMINAL BLOCK FOR REFERENCE ONLY.

BLOCK WIRE RANGE FOR REACTOR AND TIGHTENING TORQUE.	#12-#18 AWG 10 LB-IN
---	-------------------------



CUSTOMER IS RESPONSIBLE FOR INSTALLATION TO MEET ALL NATIONAL AND LOCAL ELECTRICAL CODES.

				TOLERANCES (EXCEPT AS NOTED):		7878 N. 86th STREET MILWAUKEE, WI 53224
				DECIMAL		
				.XX ± .03 .XXX ± .01		
				FRACTIONAL ± 1/32		
				ANGULAR ± 1/2°		DRN. BY DSW DATE 1/25/12 DWG. NO. KDRA3LC1DG SCALE APPRV. B SHT. 1 of 1
NO	REVISION	DATE	BY			