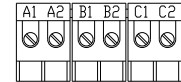
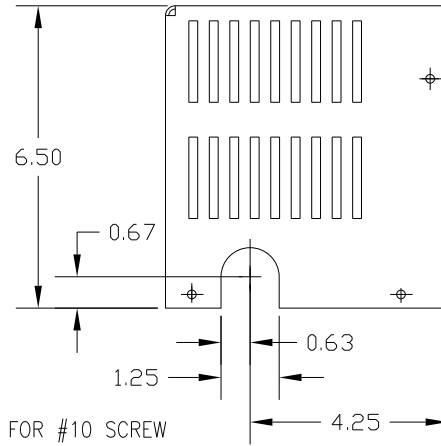
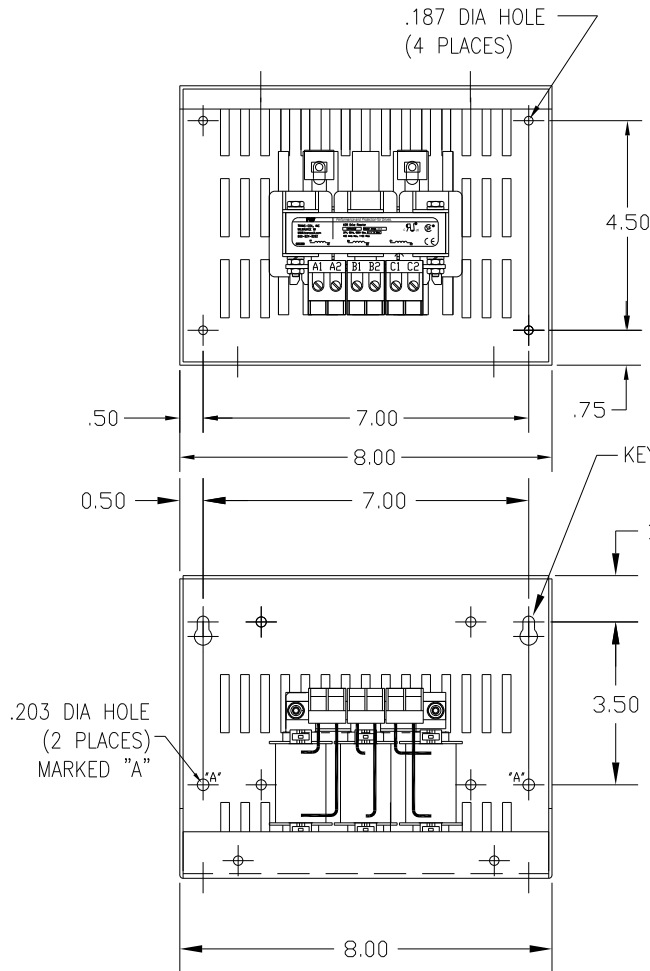
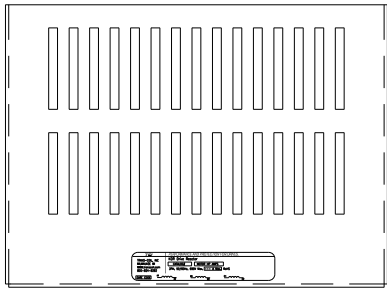
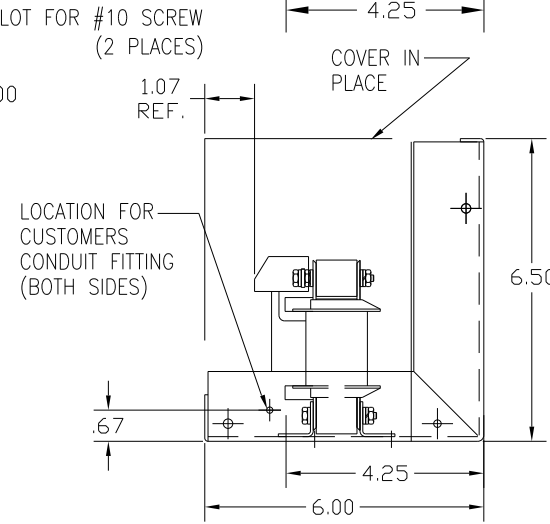


CATALOG NO	VOLTAGE	NEC MOTOR HP	NEC MOTOR CURRENT	WATTS LOSS	APPROX WT-LBS	TORQUE (LB-IN)
KDRA2HC1	480	3.0	4.8	38	8	10



NOTE: A1, A2, B1, B2, C1, C2, MARKINGS ON TERMINAL BLOCK FOR REFERENCE ONLY.

BLOCK WIRE RANGE #12-#18 AWG FOR REACTOR AND TIGHTENING TORQUE. 10 LB-IN



CUSTOMER IS RESPONSIBLE FOR INSTALLATION TO MEET ALL NATIONAL AND LOCAL ELECTRICAL CODES.

NO	REVISION	DATE	BY	TOLERANCES (EXCEPT AS NOTED)	DECIMAL	FRACTIONAL	ANGULAR	DRN. BY	DATE	DWG. NO.	SCALE	APRVD.
				.XX ± .03	.XXX ± .01	± 1/32	± 1/2°	DSW	1/25/12	B		
										KDRA2HC1DG		
												SHT. 1 of 1

TCI 7878 N. 86th STREET MILWAUKEE, WI 53224

KDR DRIVE REACTOR 480V HIGH Z, FRAME A