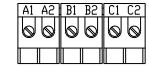
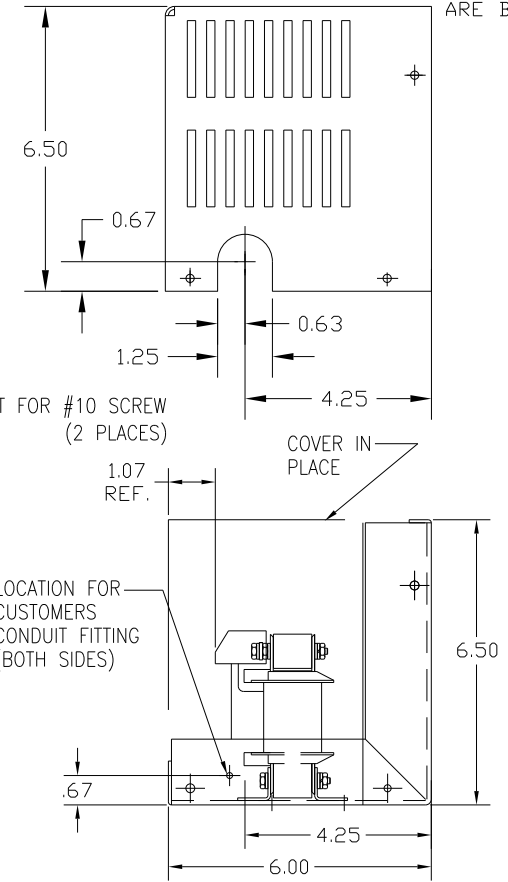
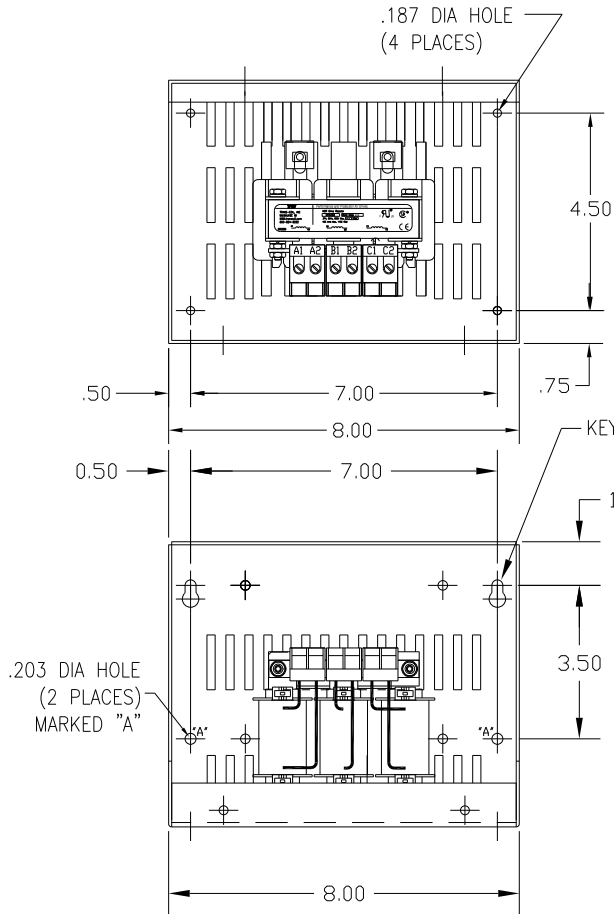
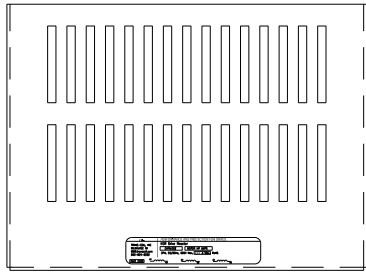


CATALOG NO	VOLTAGE	NEC MOTOR HP	NEC MOTOR CURRENT	WATTS LOSS	APPROX WT-LBS	TORQUE (LB-IN)
KDRA28LC1	208/240	3.0	10.6	29	8	10


NOTE: NEC MOTOR CURRENT SHOWN ARE BASED ON HORSEPOWER AT 208 VOLTS.



NOTE: A1, A2, B1, B2, C1, C2, MARKINGS ON TERMINAL BLOCK FOR REFERENCE ONLY.

BLOCK WIRE RANGE #12-#18 AWG FOR REACTOR AND TIGHTENING TORQUE. 10 LB-IN

CUSTOMER IS RESPONSIBLE FOR INSTALLATION TO MEET ALL NATIONAL AND LOCAL ELECTRICAL CODES.

				TOLERANCES (EXCEPT AS NOTED)	 7878 N. 86th STREET MILWAUKEE, WI 53224	
				DECIMAL	KDR DRIVE REACTOR 240V LOW Z, FRAME A	
				.XX ± .03		
				.XXX ± .01		
				FRACTIONAL	DRN. BY DSW DATE 1/25/12 DVG. NO. B KDRA28LC1DG SCALE APRVD. SHT.1 OF1	
				± 1/32		
				ANGULAR		
				± 1/2°		
NO	REVISION	DATE	BY			