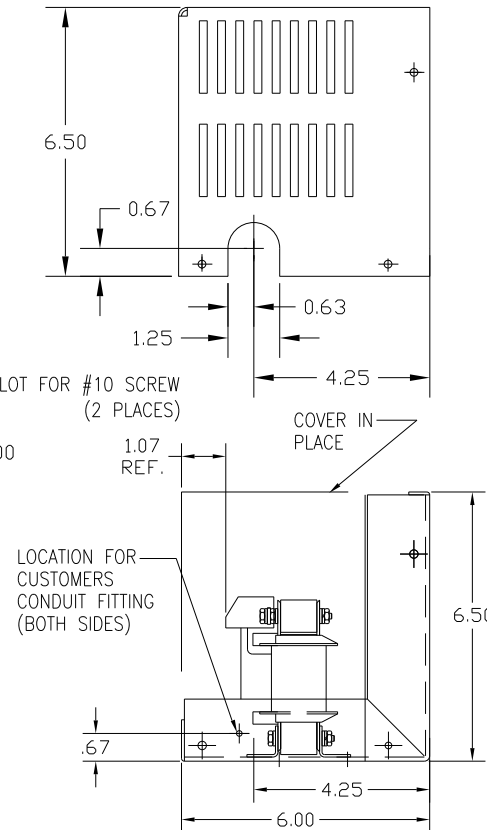
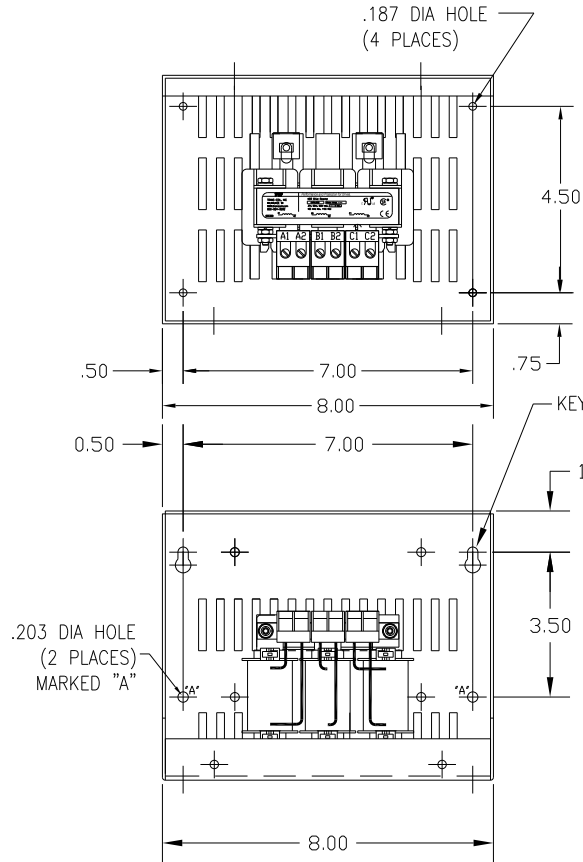
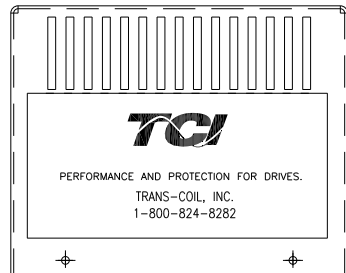
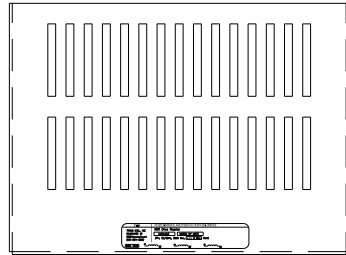


CATALOG NO	VOLTAGE	NEC MOTOR HP	NEC MOTOR CURRENT	WATTS LOSS	APPROX WT-LBS	TORQUE (LB-IN)
KDRA26LC1	208/240	1.5	6.60	18	8	10


NOTE: NEC MOTOR CURRENT SHOWN ARE BASED ON HORSEPOWER AT 208 VOLTS.



NOTE: A1, A2, B1, B2, C1, C2, MARKINGS ON TERMINAL BLOCK FOR REFERENCE ONLY.

BLOCK WIRE RANGE #12-#18 AWG FOR REACTOR AND TIGHTENING TORQUE. 10 LB-IN

CUSTOMER IS RESPONSIBLE FOR INSTALLATION TO MEET ALL NATIONAL AND LOCAL ELECTRICAL CODES.

				TOLERANCES (EXCEPT AS NOTED)	 7878 N. 86th STREET MILWAUKEE, WI 53224
				DECIMAL	
				.XX ± .03	
				.XXX ± .01	
				FRACTIONAL	DRN. BY DSW DATE 1/25/12 SCALE APRVD.
				± 1/32	
				ANGULAR	DVG. NO. B KDRA26LC1DG SHT.1 OF 1
				± 1/2°	
NO	REVISION	DATE	BY		