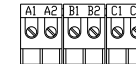
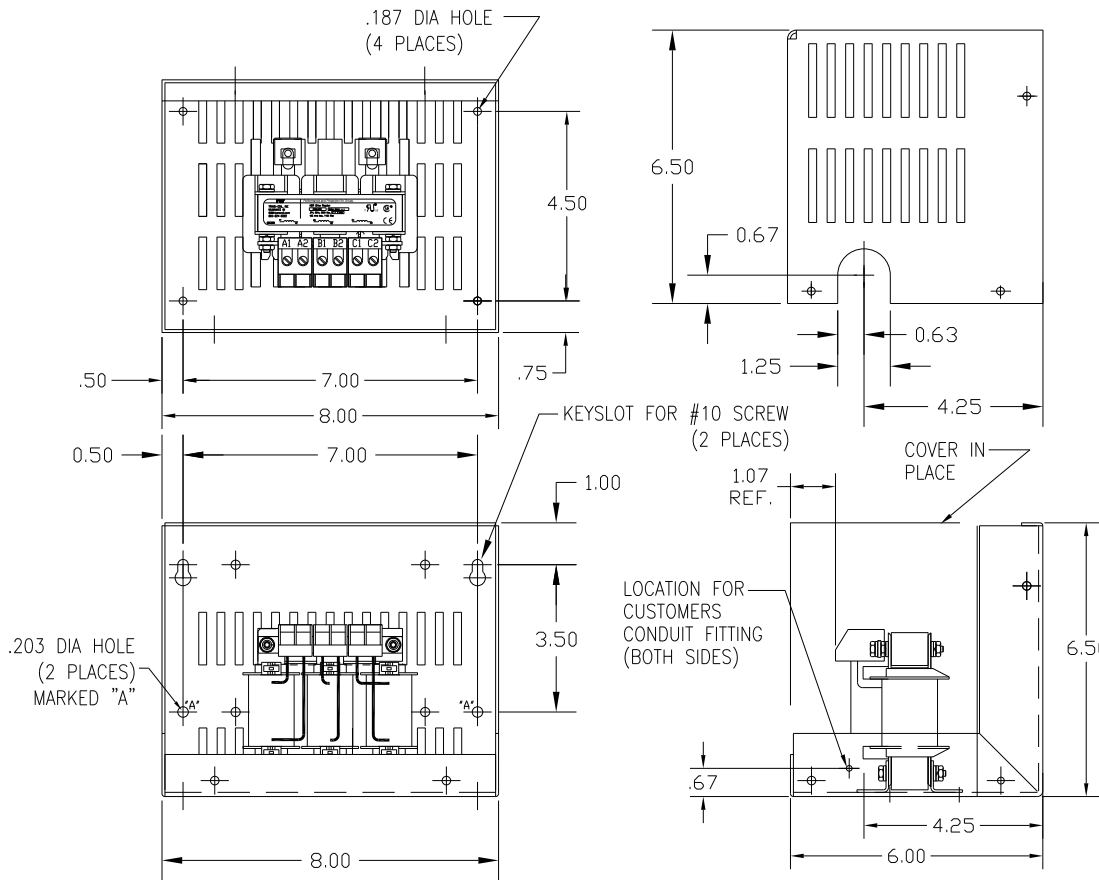
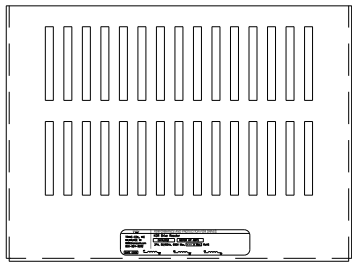


CATALOG NO	VOLTAGE	NEC MOTOR HP	NEC MOTOR CURRENT	WATTS LOSS	APPROX WT-LBS	TORQUE (LB-IN)
KDRA25LC1	208/240	1.0	4.6	11	8	10


NOTE: NEC MOTOR CURRENT SHOWN ARE BASED ON HORSEPOWER AT 208 VOLTS.



NOTE: A1, A2, B1, B2, C1, C2, MARKINGS ON TERMINAL BLOCK FOR REFERENCE ONLY.

BLOCK WIRE RANGE #12-#18 AWG FOR REACTOR AND TIGHTENING TORQUE. 10 LB-IN

CUSTOMER IS RESPONSIBLE FOR INSTALLATION TO MEET ALL NATIONAL AND LOCAL ELECTRICAL CODES.

NO	REVISION	DATE	BY	TOLERANCES (EXCEPT AS NOTED)	 7878 N. 86th STREET MILWAUKEE, WI 53224 KDR DRIVE REACTOR 240V LOW Z, FRAME A	DRN. BY	DATE	DWG. NO.	
				DECIMAL			DSW	1/25/12	KDRA25LC1DG
				.XX ± .03					
				.XXX ± .01					
				FRACTIONAL					
				± 1/32					
				ANGULAR					
				± 1/2°					
						SCALE	APRVD.	SHT. 1 OF 1	