

208/240 Rated Voltage, 600 Max Voltage, High Z, Impedance.

Part Number	Horsepower (HP)	Motor Amps (A)	Maximum Amps (A)	Inductance (uH)	Weight (LBS)	Terminal Hole Size (Inches)	Losses (W)
KDRF26HC4	40	114	114	152	65	0.28	193

208/240 Rated Voltage, 600 Max Voltage, High Z, Impedance.

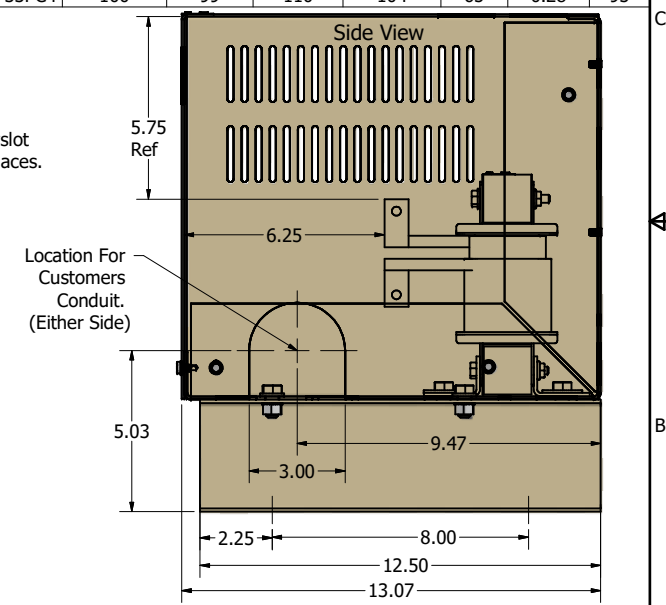
Part Number	Horsepower (HP)	Motor Amps (A)	Maximum Amps (A)	Inductance (uH)	Weight (LBS)	Terminal Hole Size (Inches)	Losses (W)
KDRF25HC4	30	88	92	189	65	0.28	179

480 Rated Voltage, 600 Max Voltage, Output

Part Number	Horsepower (HP)	Motor Amps (A)	Maximum Amps (A)	Inductance (uH)	Weight (LBS)	Terminal Hole Size (Inches)	Losses (W)
KDRF3PC4	75	96	110	107	65	0.28	95

575 Rated Voltage, 600 Max Voltage, Output

Part Number	Horsepower (HP)	Motor Amps (A)	Maximum Amps (A)	Inductance (uH)	Weight (LBS)	Terminal Hole Size (Inches)	Losses (W)
KDRF33PC4	100	99	110	104	65	0.28	95



Customer Is Responsible For Installation To Meet All National And Local Electrical Codes.

Material(s) Shall be RoHS Compliant

THE INFORMATION AND DESIGNS CONTAINED IN THIS DRAWING ARE CONFIDENTIAL AND THE PROPRIETARY PROPERTY OF ALLIED MOTION TECHNOLOGIES INC. AND ITS SUBSIDIARIES. NEITHER THIS DESIGN NOR ANY INFORMATION CONTAINED IN THIS DRAWING MAY BE REPRODUCED OR DISCLOSED TO OTHERS WITHOUT THE EXPRESS WRITTEN CONSENT OF ALLIED MOTION TECHNOLOGIES INC. AND ITS SUBSIDIARIES.

NO	REVISION	DATE	BY	TOLERANCES (EXCEPT AS NOTED)
B	6638, Change to Flag Termination	4/17/2024	DSW	DECIMAL .XX ± .25 .XXX ± .10
A	2289, Term Change	2/25/2004	DSW	FRACTIONAL ± 1/32
				ANGULAR ± 1°

W132N10611 (Rev 13) Rev 6  
Germantown, WI 53022  
© 2024 TCI, LLC  
An Official Motion Company  
KDR (F Frame) Enclosed

DRN BY: DSW	DATE: 03/06/2004	KDR-37DG
SCALE: 1/3	REVISED:	FIG:

SHT 1 OF 1