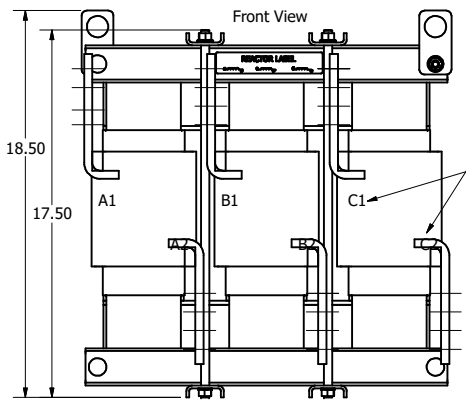


480 Rated Voltage, 600 Max Voltage, High Z, Impedance.							
Part Number	Horsepower (HP)	Motor Amps (A)	Maximum Amps (A)	Inductance (uH)	Weight (LBS)	Available Lug Kit	Terminal Hole Size (Inches)
KDRX3H	900	1080	1100	28.9	308	SLK17	0.53

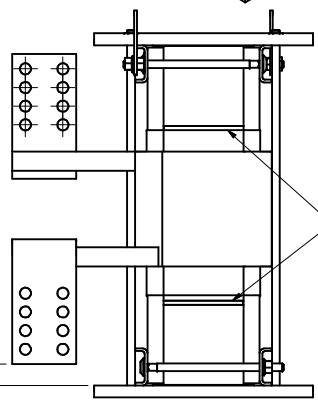
480 Rated Voltage, 600 Max Voltage, Low Z, Impedance.							
Part Number	Horsepower (HP)	Motor Amps (A)	Maximum Amps (A)	Inductance (uH)	Weight (LBS)	Available Lug Kit	Terminal Hole Size (Inches)
KDRX3L	900	1080	1100	17.4	275	SLK17	0.53
KDRX1L	1000	1200	1216	15.6	290	SLK17	0.52

575 Rated Voltage, 600 Max Voltage, Low Z, Impedance.							
Part Number	Horsepower (HP)	Motor Amps (A)	Maximum Amps (A)	Inductance (uH)	Weight (LBS)	Available Lug Kit	Terminal Hole Size (Inches)
KDRX43L	1100	1056	1064	21.7	315	SLK17	0.53
KDRX44L	1250	1200	1200	19.1	300	SLK18	0.53

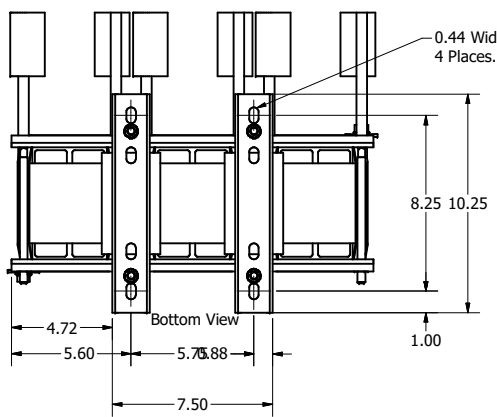
575 Rated Voltage, 600 Max Voltage, High Z, Impedance.							
Part Number	Horsepower (HP)	Motor Amps (A)	Maximum Amps (A)	Inductance (uH)	Weight (LBS)	Available Lug Kit	Terminal Hole Size (Inches)
KDRX41H	900	864	864	44.3	310	SLK17	0.53
KDRX42H	1000	960	1000	39.8	375	SLK17	0.53
KDRX43H	1100	1056	1064	36.2	450	SLK17	0.53



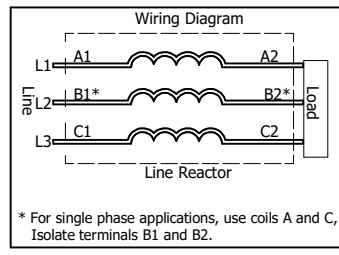
(Customer Connections) Markings On Coil For Reference Only.



Divide Measured Gap In Half As Best As Possible, Item Find Number 13R and 14R When Needed.



0.44 Wide x 0.75 Long Slots 4 Places.



TCL (800) 824-8282 transcoil.com

TCL, LLC
Germantown, WI, USA
transcoil.com
800-824-8282

KDRUL Drive Reactor
KDR - Motor Amps -
3PH, 90/80Hz, -V Rated, 600V Max, -A Max
40C Arms Max, 155C Flts, 10x15
Manual #30895 LUG KIT #SLK-

DATE CODE AL

- Notes:
1. KDR Lug Kits sold separately. Contact TCL.
 2. For KDRUL Version With Terminal Lugs Attached, See Sheet 4
 3. UL file number: cULus Listed File E116124.
 4. KDR Drive Reactors Comply With The Thermal and Altitude Standards Set Forth by NEMA ST20-1992.
 5. KDR IOM Manual Part Number 30895
 6. NEC Current For 208/240 Volts, Horsepower Based On 208 Volts.
 7. Material(s) Shall be RoHS Compliant
 8. Customer Is Responsible For Installation To Meet All National And Local Electrical Codes.

THE INFORMATION AND DESIGNS CONTAINED IN THIS DRAWING ARE CONFIDENTIAL AND THE PROPRIETARY PROPERTY OF ALLIED MOTION TECHNOLOGIES INC. AND ITS SUBSIDIARIES. NEITHER THIS DESIGN NOR ANY INFORMATION CONTAINED IN THIS DRAWING MAY BE REPRODUCED OR DISCLOSED TO OTHERS WITHOUT THE EXPRESS WRITTEN CONSENT OF ALLIED MOTION TECHNOLOGIES INC. AND ITS SUBSIDIARIES.				TOLERANCES (EXCEPT AS NOTED) DECIMAL .XX ± .25 .XXX ± .10				W182N10611 (Rev 1) 15Feb Germantown, WI 53022 © 2021 TCL, LLC An Official Motors Company KDR X Frame, Copper Bus Reactor Drawing
C	6252, Remove KDRX4H	4/26/2023	DSW	FRACTIONAL ± 1/16		DWN BY: DSW DATE: 3/5/2018 SCALE: 1:3.2 DRAWN BY: CSE		
B	5796, Title blk updated, chg lift ring sides	12/8/2021	DSW	ANGULAR ± 1°		107539-3DG		
A	Combined Drawings	3/5/2018	DSW					
NO	REVISION	DATE	BY			SHT 3 OF 8		