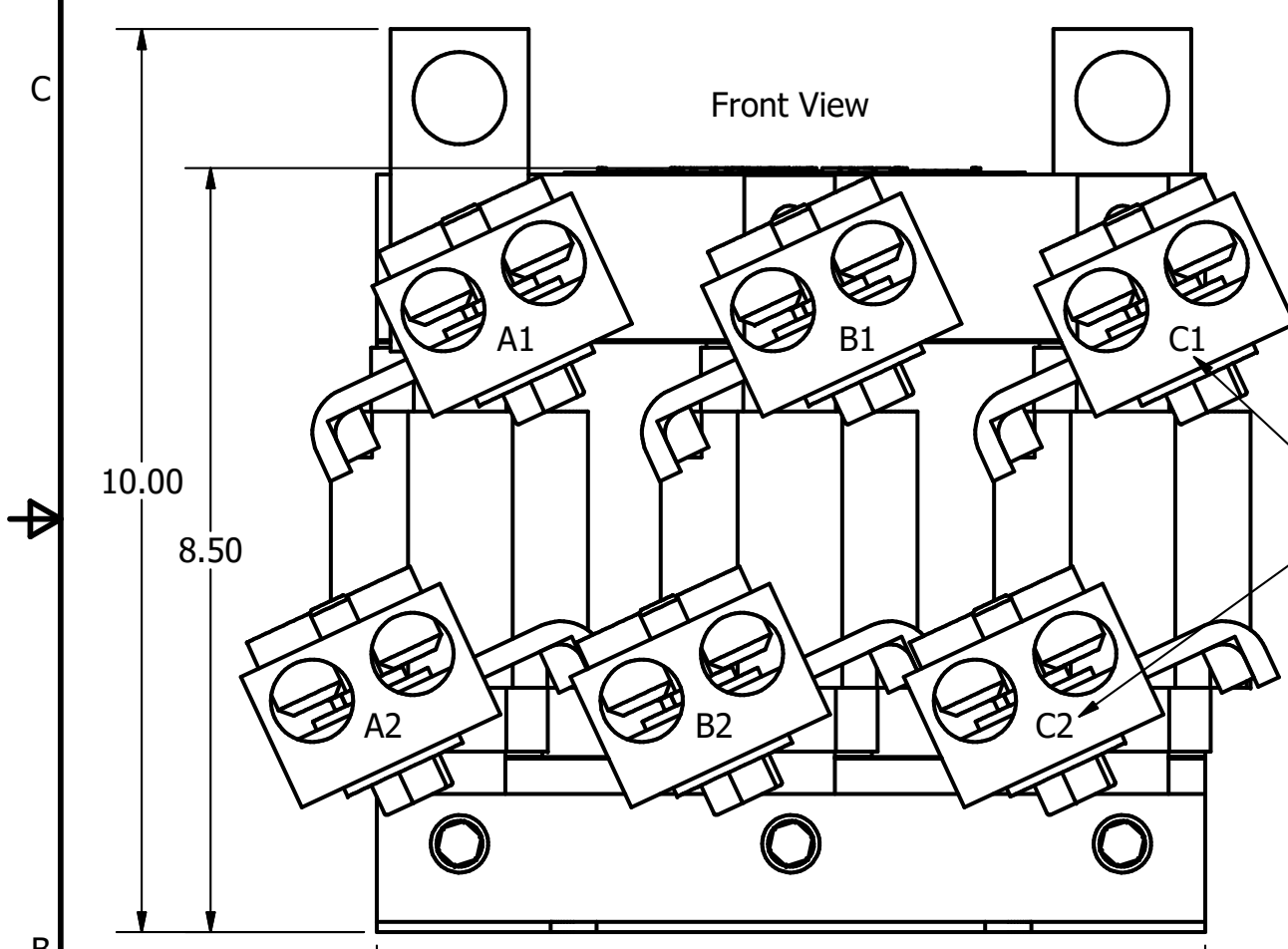


208/240 Rated Voltage, 600 Max Voltage, High Z, Impedance.							
Part Number	Horsepower (HP)	Motor Amps (A)	Maximum Amps (A)	Inductance (uH)	Weight (LBS)	Losses (W)	Attached Lug Kit
KDRULJ22H	150	396	412	46.3	74	465	SLK13
KDRULJ21H	200	528	534	35.6	74	516	SLK14

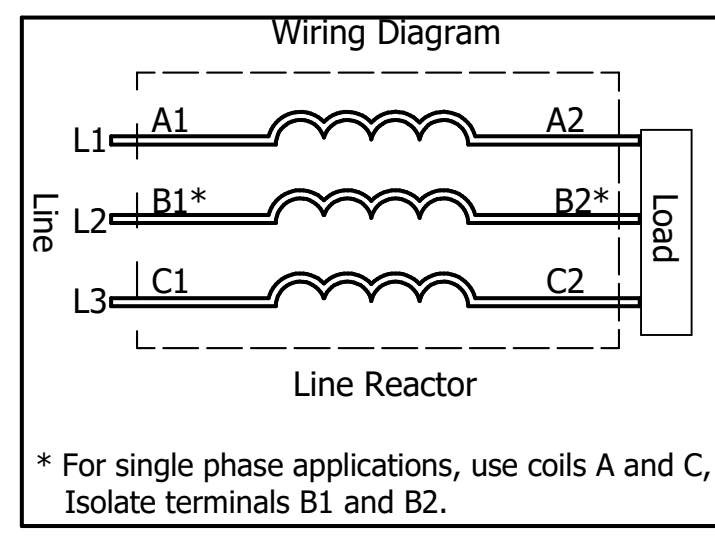
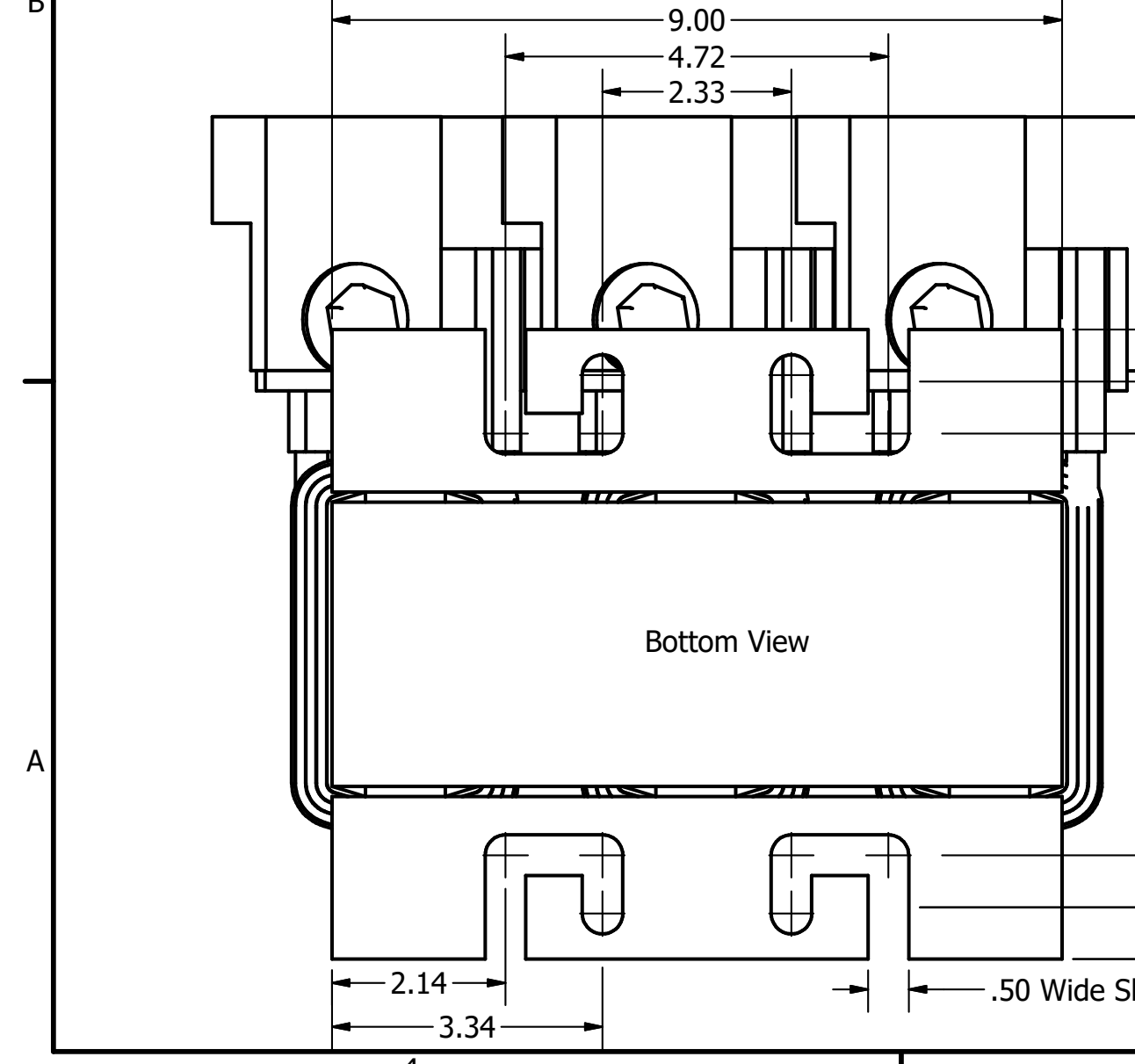
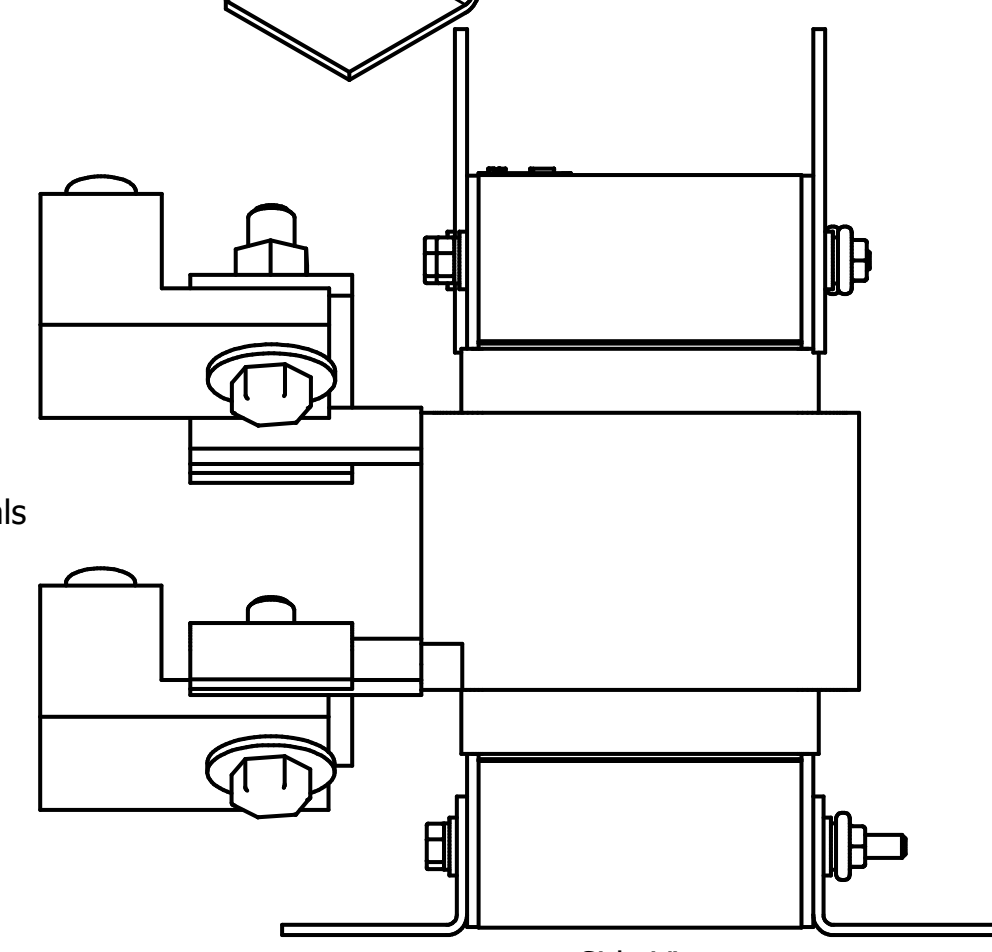
575 Rated Voltage, 600 Max Voltage, Low Z, Impedance.							
Part Number	Horsepower (HP)	Motor Amps (A)	Maximum Amps (A)	Inductance (uH)	Weight (LBS)	Losses (W)	Attached Lug Kit
KDRULJ45L	350	336	336	88.9	83	474	SLK13
KDRULJ43L	400	382	385	69.6	83	473	SLK13
KDRULJ44L	450	412	412	71.3	83	473	SLK13

480 Rated Voltage, 600 Max Voltage, Output							
Part Number	Horsepower (HP)	Motor Amps (A)	Maximum Amps (A)	Inductance (uH)	Weight (LBS)	Losses (W)	Attached Lug Kit
KDRULJ2P	300	361	365	31.1	74	221	SLK13

575 Rated Voltage, 600 Max Voltage, Output							
Part Number	Horsepower (HP)	Motor Amps (A)	Maximum Amps (A)	Inductance (uH)	Weight (LBS)	Losses (W)	Attached Lug Kit
KDRULJ32P	350	336	360	32.6	74	221	SLK13



(Customer Connections)  
Markings On Pressure Terminals  
For Reference Only.



\* For single phase applications, use coils A and C, Isolate terminals B1 and B2.

**TCI** (800) 824-8282 [transcoil.com](http://transcoil.com)

TCI, LLC  
Germantown, WI, USA.  
[transcoil.com](http://transcoil.com)  
800-824-8282

**KDRUL Drive Reactor**  
KDRUL— Motor Amps —  
3PH, 50/60Hz, —V Rated, 600V Max, —A Max  
40C Amb Max, 155C Rise, RoHS  
Term Torque— lb-in

UL LISTED CE  
SEE CONT. PG. 0000

DATE CODE A1 A2 B1 B2 C1 C2

- Note:
1. UL file number: cULus Listed File E116124.
  2. KDR Drive Reactors Comply With The Thermal and Altitude Standards Set Forth by NEMA ST20-1992.
  3. For Terminal Torques And Wire Size See, KDR IOM Manual, Part Number 30895
  4. NEC Current For 208/240 Volts, Horsepower Based On 208 Volts.
  5. Material(s) Shall be RoHS Compliant
  6. Customer Is Responsible For Installation To Meet All National And Local Electrical Codes.

TCI, LLC CLAIMS PROPRIETARY RIGHTS IN THE MATERIAL HEREIN DISCLOSED. IT IS SUPPLIED WITHOUT PREJUDICE TO ANY PATENT RIGHTS OF TCI AND MAY NOT BE REPRODUCED OR USED TO MANUFACTURE ANYTHING SHOWN THEREIN WITHOUT WRITTEN PERMISSION FROM TCI.

TOLERANCES (EXCEPT AS NOTED)				TCI		W132 N10611 Grant Drive Germantown, WI 53022	
DECIMAL				DRN BY DSW		DATE: 2/28/18	
XX ± .25				SCALE: 1/2.2		APRVD: 107536DG	
.XXX ± .10				NO		SIZE C	
FRACTIONAL ± 1/16				REVISION		SHT. 6 OF 8	
ANGULAR ± 1°				DATE			
				BY			