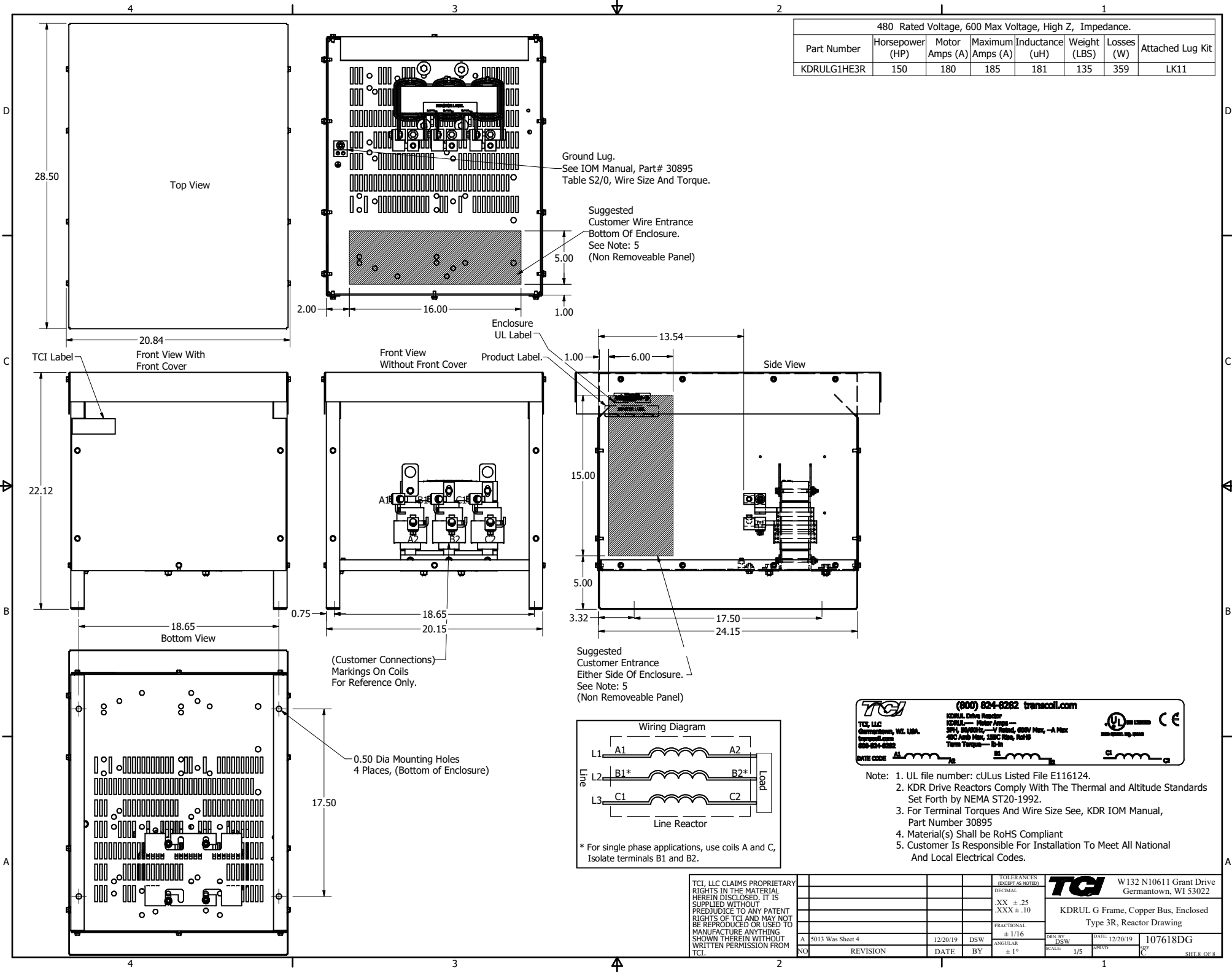


480 Rated Voltage, 600 Max Voltage, High Z, Impedance.							
Part Number	Horsepower (HP)	Motor Amps (A)	Maximum Amps (A)	Inductance (uH)	Weight (LBS)	Losses (W)	Attached Lug Kit
KDRULG1HE3R	150	180	185	181	135	359	LK11



Ground Lug.  
 See IOM Manual, Part# 30895  
 Table S2/0, Wire Size And Torque.

Suggested  
 Customer Wire Entrance  
 Bottom Of Enclosure.  
 See Note: 5  
 (Non Removeable Panel)

Suggested  
 Customer Entrance  
 Either Side Of Enclosure.  
 See Note: 5  
 (Non Removeable Panel)

(Customer Connections)  
 Markings On Coils  
 For Reference Only.

**TCI** (800) 824-6282 transcoll.com

TCI, LLC  
 Germantown, WI, USA  
 transcoll.com  
 800-824-6282

KDRULG Drive Reactor  
 KDRULG Motor Amps ---  
 200, 250, 300, 350, 400, 450, 500, 600V Max, -A Max  
 400 Amp Max, 150C Max, 100F  
 Term Torques --- 8-in

UL LISTED  
 CE

DATE CODE

TCI, LLC CLAIMS PROPRIETARY RIGHTS IN THE MATERIAL HEREIN DISCLOSED. IT IS SUPPLIED WITHOUT PREJUDICE TO ANY PATENT RIGHTS OF TCI AND MAY NOT BE REPRODUCED OR USED TO MANUFACTURE ANYTHING SHOWN THEREIN WITHOUT WRITTEN PERMISSION FROM TCI.

TOLERANCES (EXCEPT AS NOTED)				TCI		W132 N10611 Grant Drive Germantown, WI 53022	
			DECIMAL				
			.XX ± .25				
			.XXX ± .10				
			FRACTIONAL				
			± 1/16				
			ANGULAR				
			± 1°				
A	5013 Was Sheet 4	12/20/19	DSW		DATE	12/20/19	107618DG
NO	REVISION	DATE	BY	SCALE	1/5	DRYD	DRG