

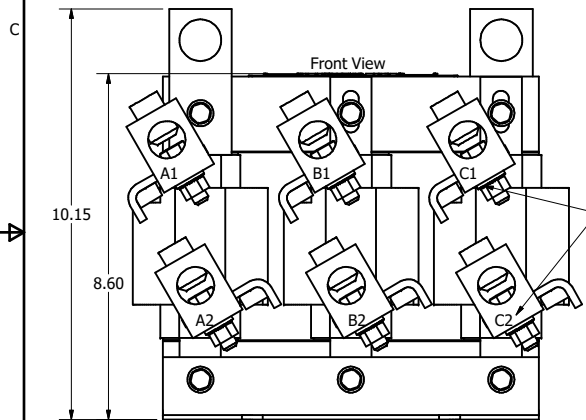
480 Rated Voltage, 600 Max Voltage, Low Z, Impedance.							
Part Number	Horsepower (HP)	Motor Amps (A)	Maximum Amps (A)	Inductance (uH)	Weight (LBS)	Losses (W)	Attached Lug Kit
KDRULG3L	200	240	240	83.9	67	280	SLK12

575 Rated Voltage, 600 Max Voltage, High Z, Impedance.							
Part Number	Horsepower (HP)	Motor Amps (A)	Maximum Amps (A)	Inductance (uH)	Weight (LBS)	Losses (W)	Attached Lug Kit
KDRULG45H	150	144	155	326	67	405	SLK11

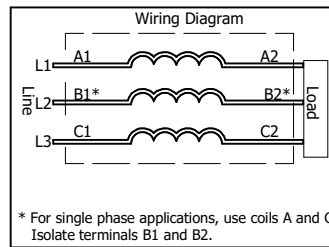
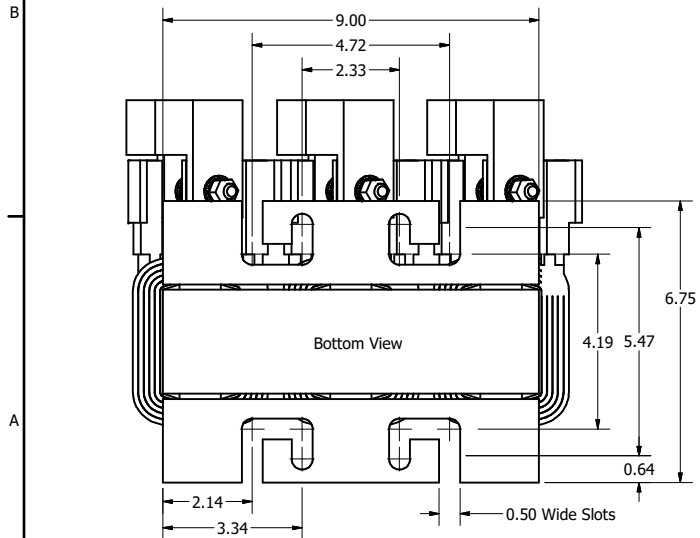
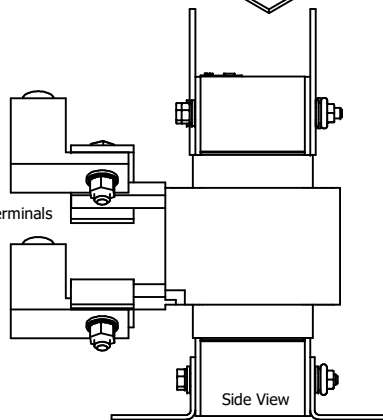
575 Rated Voltage, 600 Max Voltage, Low Z, Impedance.							
Part Number	Horsepower (HP)	Motor Amps (A)	Maximum Amps (A)	Inductance (uH)	Weight (LBS)	Losses (W)	Attached Lug Kit
KDRULG47L	250	242	242	108	67	394	SLK12
KDRULG45L	300	289	292	98.8	67	374	SLK12

480 Rated Voltage, 600 Max Voltage, Output							
Part Number	Horsepower (HP)	Motor Amps (A)	Maximum Amps (A)	Inductance (uH)	Weight (LBS)	Losses (W)	Attached Lug Kit
KDRULG1P	200	240	250	41.3	62	161	SLK12

575 Rated Voltage, 600 Max Voltage, Output							
Part Number	Horsepower (HP)	Motor Amps (A)	Maximum Amps (A)	Inductance (uH)	Weight (LBS)	Losses (W)	Attached Lug Kit
KDRULG31P	250	242	250	44	62	161	SLK12



(Customer Connections) Markings On Pressure Terminals For Reference Only.



* For single phase applications, use coils A and C, Isolate terminals B1 and B2.

TCL (800) 824-8282 transcoil.com

TCL, LLC
 Germantown, WI, USA.
transcoil.com
 800-824-8282

KDRUL Drive Reactor
 KDRUL— Motor Amps —
 3PH, 50/60Hz, —V Rated, 600V Max, —A Max
 40C Amb Max, 155C Rise, RoHS
 Term Torque— lb-in

UL LISTED
 3RD PART. NO. 9948

DATE CODE A1 A2 B1 B2 C1 C2

- Note:
1. UL file number: cULus Listed File E116124.
 2. KDR Drive Reactors Comply With The Thermal and Altitude Standards Set Forth by NEMA ST20-1992.
 3. For Terminal Torques And Wire Size See, KDR IOM Manual, Part Number 30895
 4. NEC Current For 208/240 Volts, Horsepower Based On 208 Volts.
 5. Material(s) Shall be RoHS Compliant
 6. Customer Is Responsible For Installation To Meet All National And Local Electrical Codes.

TCL, LLC CLAIMS PROPRIETARY RIGHTS IN THE MATERIAL HEREIN DISCLOSED. IT IS SUPPLIED WITHOUT PREJUDICE TO ANY PATENT RIGHTS OF TCL AND MAY NOT BE REPRODUCED OR USED TO MANUFACTURE ANYTHING SHOWN THEREIN WITHOUT WRITTEN PERMISSION FROM TCL.

NO	REVISION	DATE	BY

TCL W132 N10611 Grant Drive
 Germantown, WI 53022

KDRUL G Frame, Copper Bus
 Reactor Drawing

DRN BY: DSW DATE: 2/28/18
 SCALE: 1/2 DRAWN: 107533DG
 CHECK: JSC

SHT 4 OF 8