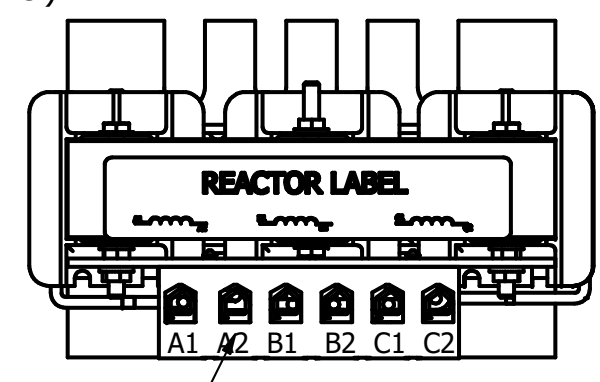
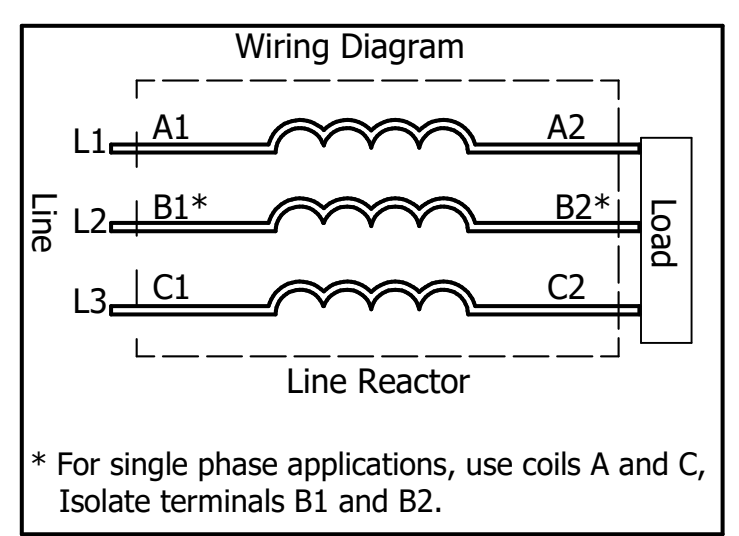
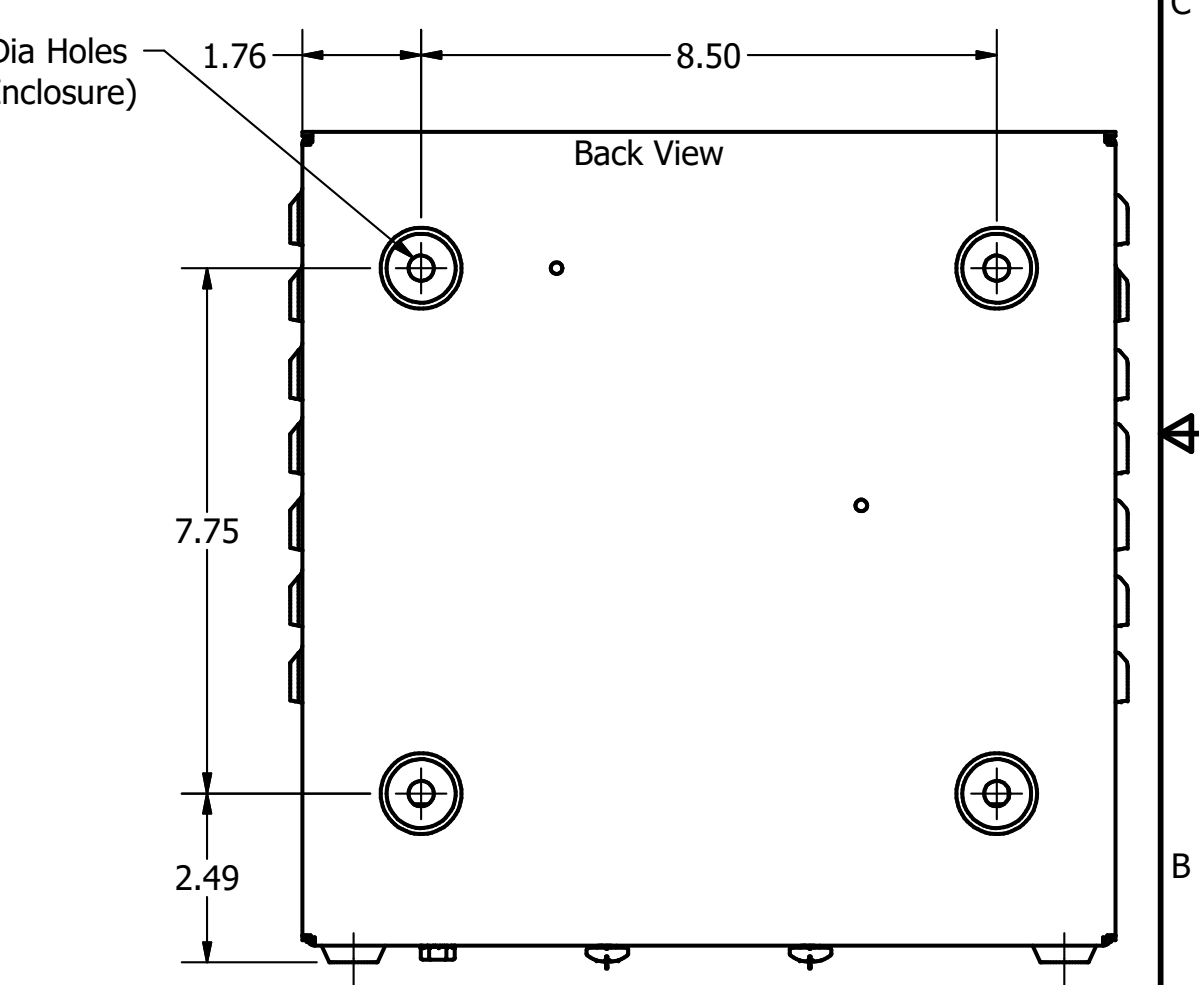
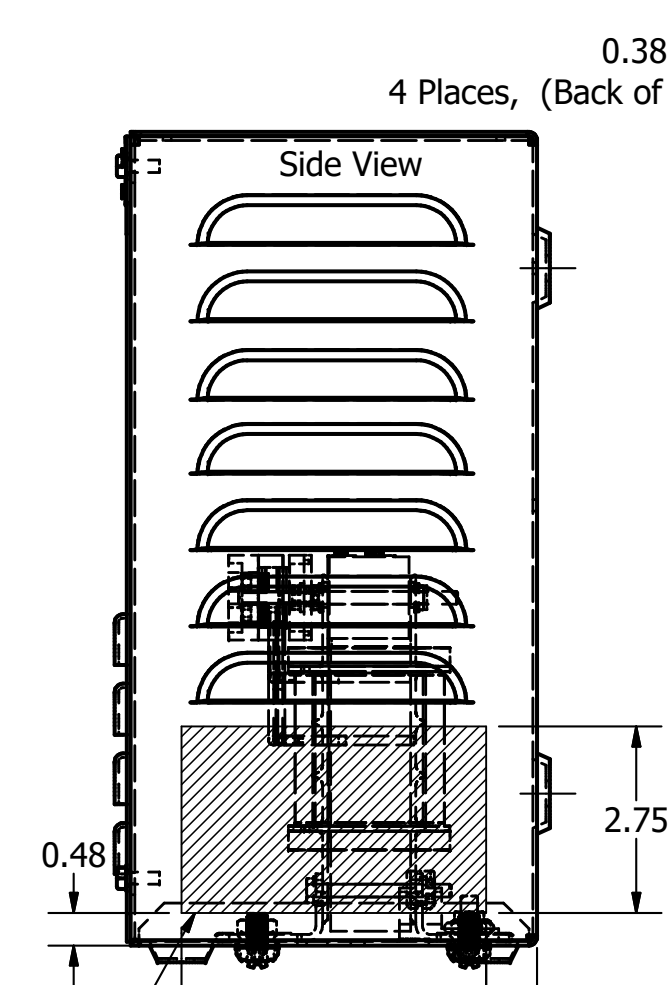
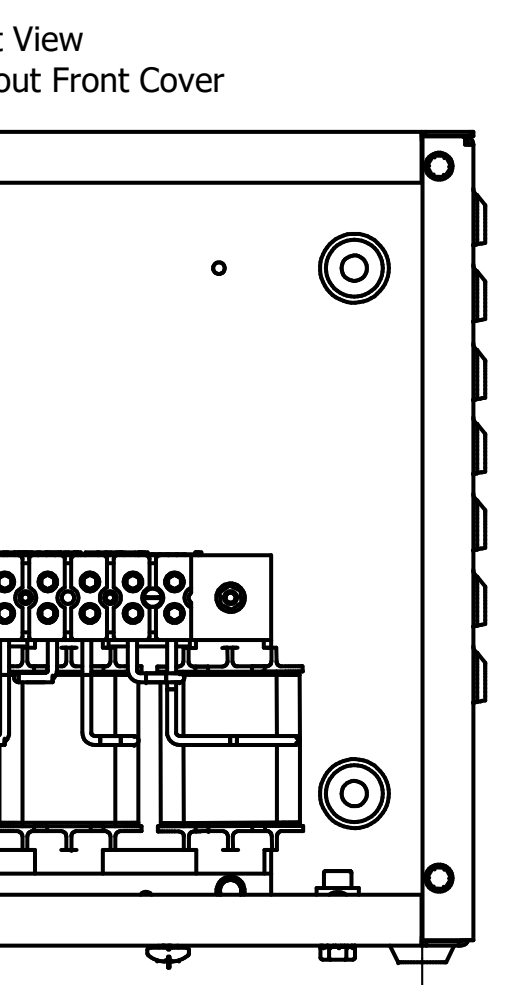
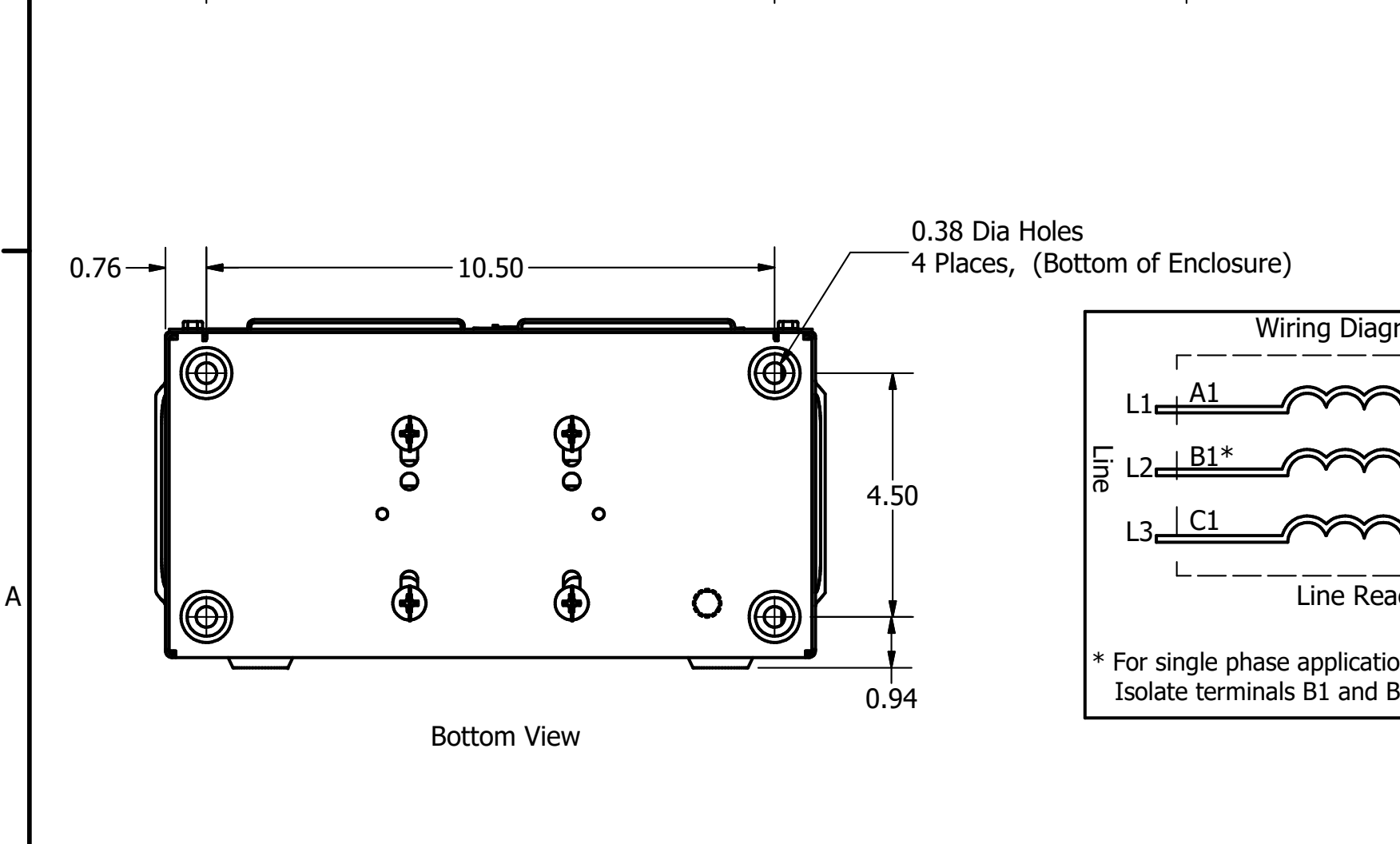
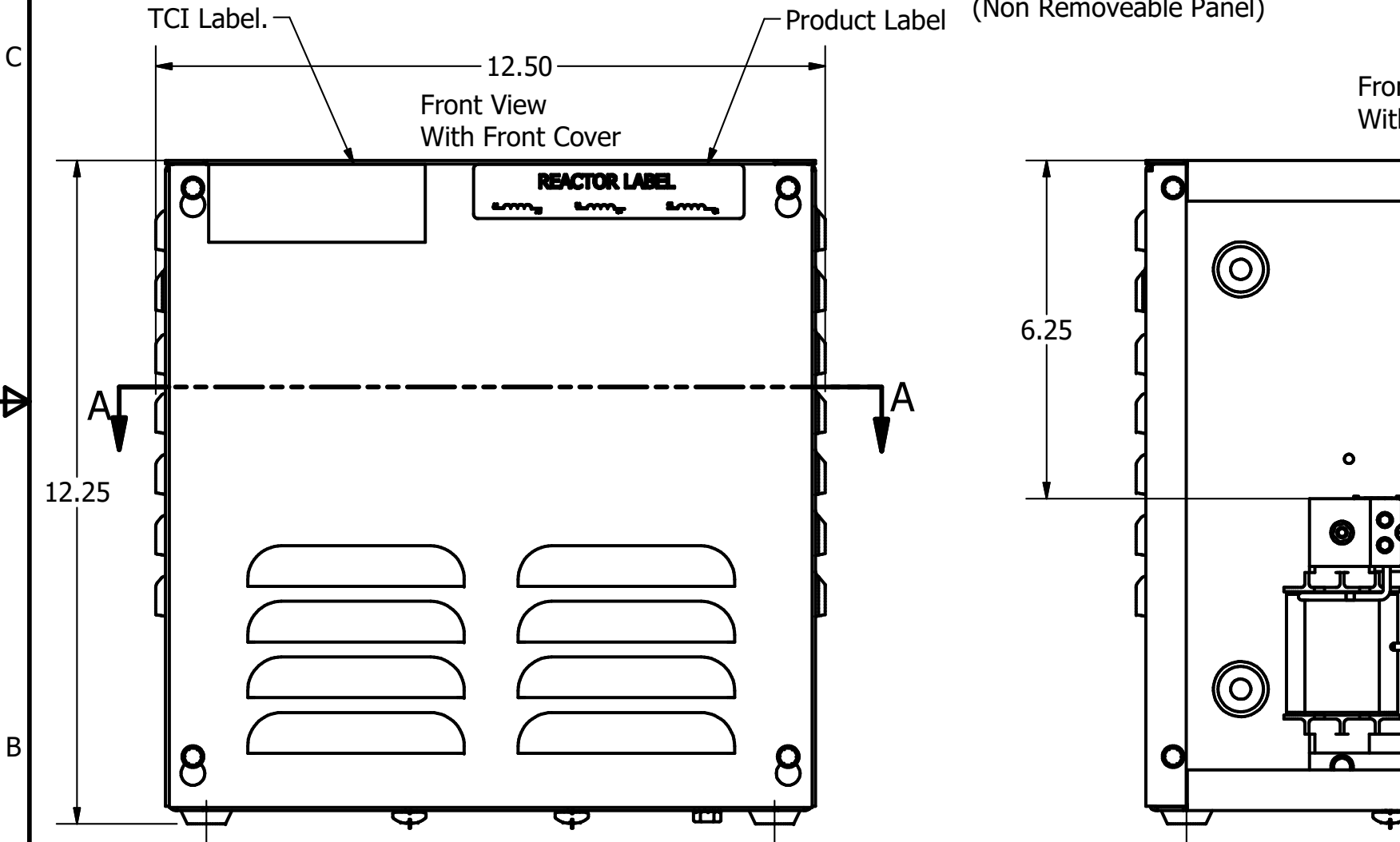
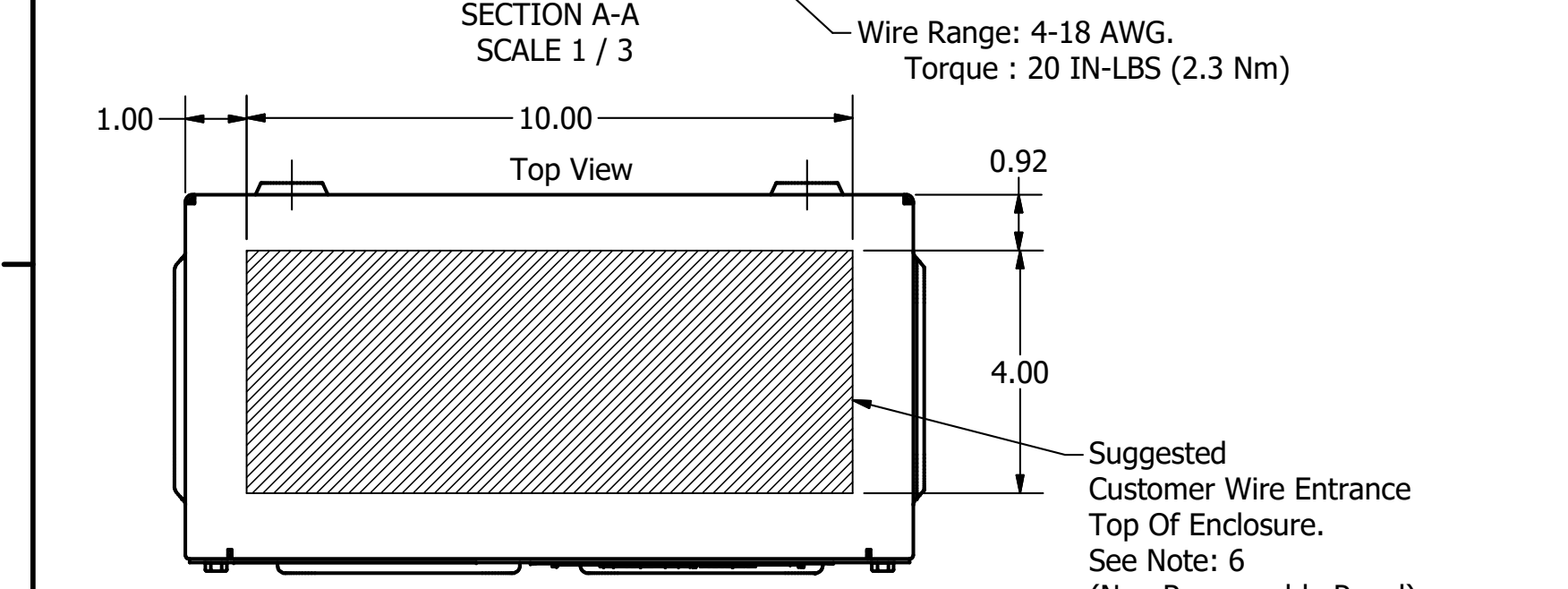
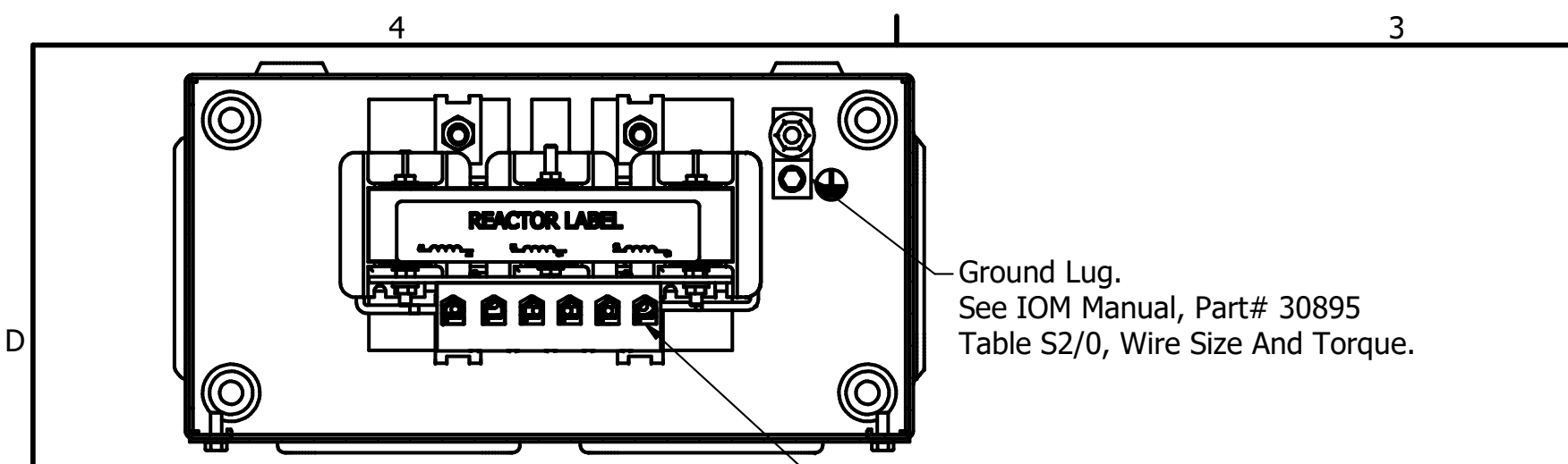


208/240 Rated Voltage, 600 Max Voltage, High Z, Impedance.						
Part Number	Horsepower (HP)	Motor Amps (A)	Maximum Amps (A)	Inductance (uH)	Weight (LBS)	Losses (W)
KDRC22HE01	20	59.4	62	278	25.4	113
480 Rated Voltage, 600 Max Voltage, High Z, Impedance.						
Part Number	Horsepower (HP)	Motor Amps (A)	Maximum Amps (A)	Inductance (uH)	Weight (LBS)	Losses (W)
KDRC3HE01	20	27	27	1210	25.4	108
KDRC1HE01	25	34	35	980	25.4	112
575 Rated Voltage, 600 Max Voltage, High Z, Impedance.						
Part Number	Horsepower (HP)	Motor Amps (A)	Maximum Amps (A)	Inductance (uH)	Weight (LBS)	Losses (W)
KDRC43HE01	25	27	30	1670	25.4	107
480 Rated Voltage, 600 Max Voltage, Output						
Part Number	Horsepower (HP)	Motor Amps (A)	Maximum Amps (A)	Inductance (uH)	Weight (LBS)	Losses (W)
KDRC1PE01	40	52	55	246	25.4	70

480 Rated Voltage, 600 Max Voltage, Low Z, Impedance.						
Part Number	Horsepower (HP)	Motor Amps (A)	Maximum Amps (A)	Inductance (uH)	Weight (LBS)	Losses (W)
KDRC1LE01	40	52	55	387	25.4	114

575 Rated Voltage, 600 Max Voltage, Low Z, Impedance.						
Part Number	Horsepower (HP)	Motor Amps (A)	Maximum Amps (A)	Inductance (uH)	Weight (LBS)	Losses (W)
KDRC43LE01	40	41	41	672	25.4	109
KDRC44LE01	50	52	52	529	25.4	123

575 Rated Voltage, 600 Max Voltage, Output						
Part Number	Horsepower (HP)	Motor Amps (A)	Maximum Amps (A)	Inductance (uH)	Weight (LBS)	Losses (W)
KDRC31PE01	50	52	55	237	25.4	70



**TCI** (800) 824-8282 [transcoil.com](http://transcoil.com)

KDRUL Drive Reactor  
 KDR- Motor Amps —  
 3PH, 50/60Hz, —V Rated, 600V Max, —A Max, RoHS  
 40C Amb Max, 150C Rise  
 Manual #30895

TCI, LLC  
 Germantown, WI, USA.  
[transcoil.com](http://transcoil.com)  
 800-824-8282

DATE CODE

- Notes:
1. UL file number: cULus Listed File E116124.
  2. KDR Drive Reactors Comply With The Thermal and Altitude Standards Set Forth by NEMA ST20-1992.
  3. KDR IOM Manual Part Number 30895
  4. NEC Current For 208/240 Volts, Horsepower Based On 208 Volts.
  5. Material(s) Shall be RoHS Compliant
  6. Customer Is Responsible For Installation To Meet All National And Local Electrical Codes.

TCI, LLC CLAIMS PROPRIETARY RIGHTS IN THE MATERIAL HEREIN DISCLOSED. IT IS SUPPLIED WITHOUT PREJUDICE TO ANY PATENT RIGHTS OF TCI AND MAY NOT BE REPRODUCED OR USED TO MANUFACTURE ANYTHING SHOWN THEREIN WITHOUT WRITTEN PERMISSION FROM TCI.				TOLERANCES (EXCEPT AS NOTED) DECIMAL XX ± .25 .XXX ± .10 FRACTIONAL ± 1/16 ANGULAR ± 1°		<b>TCI</b> W132 N10611 Grant Drive Germantown, WI 53022	
B	4686, TB, Screws Change to 1/8 Hex	5/9/19	DSW	KDR C Frame, Terminal Block, Enclosed Type 1, Reactor Drawing			
A	As Designed	3/7/18	DSW	DRN BY DSW	DATE: 3/7/18	107543DG	
NO	REVISION	DATE	BY	SCALE: 1/3	APRVD:	SIZE C	SHT. OF 0