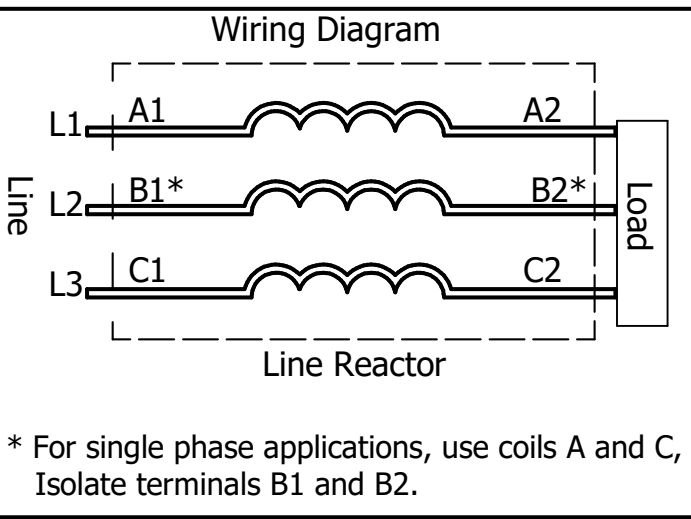
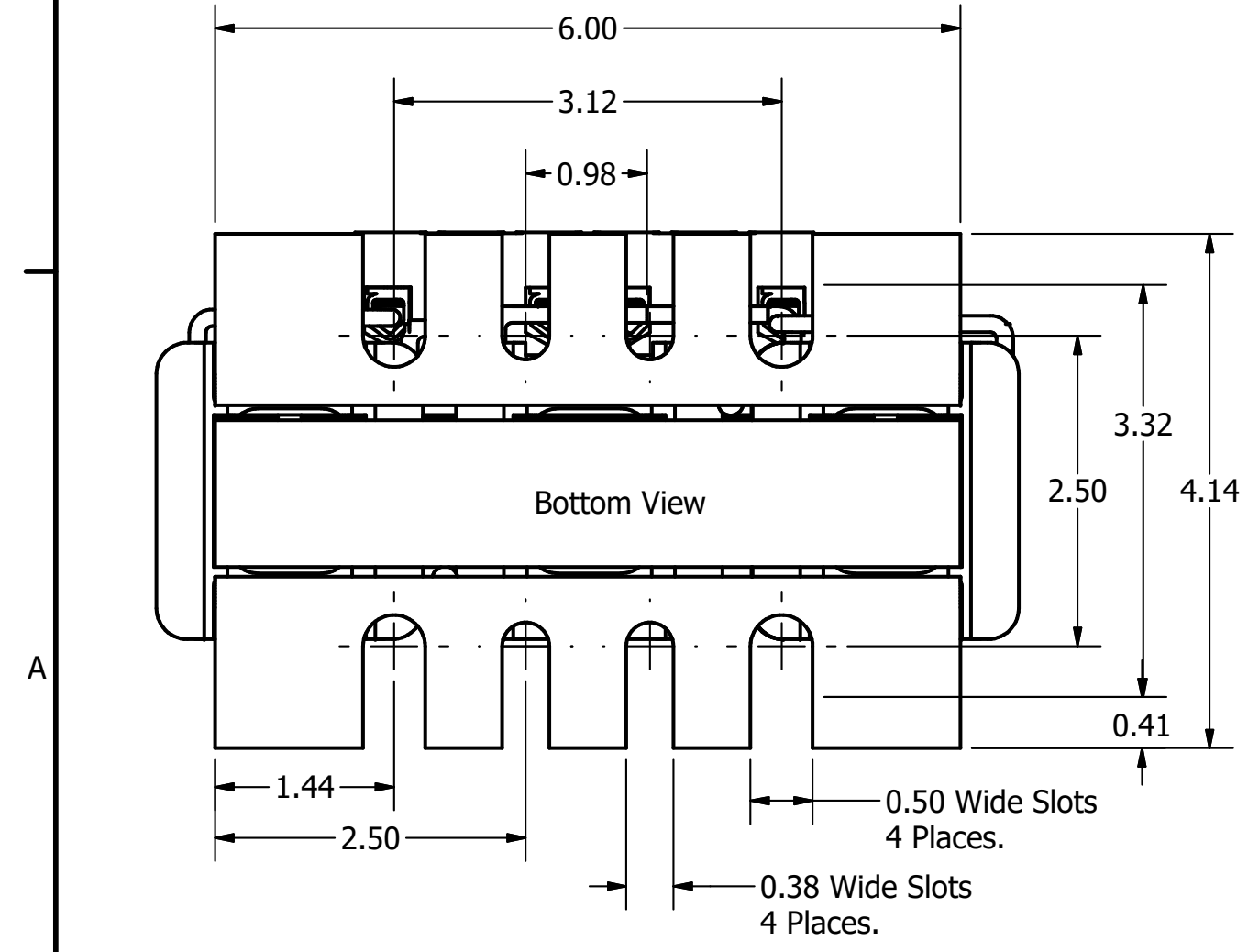
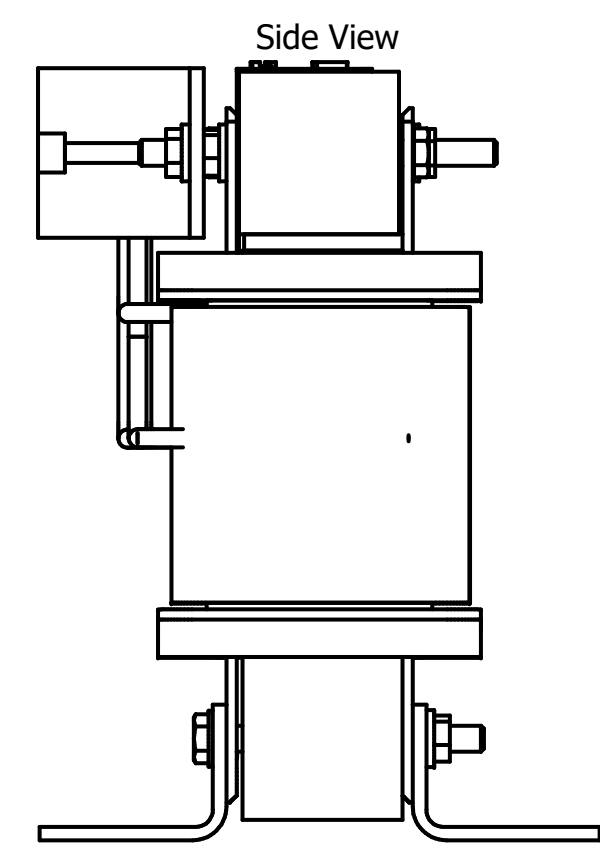
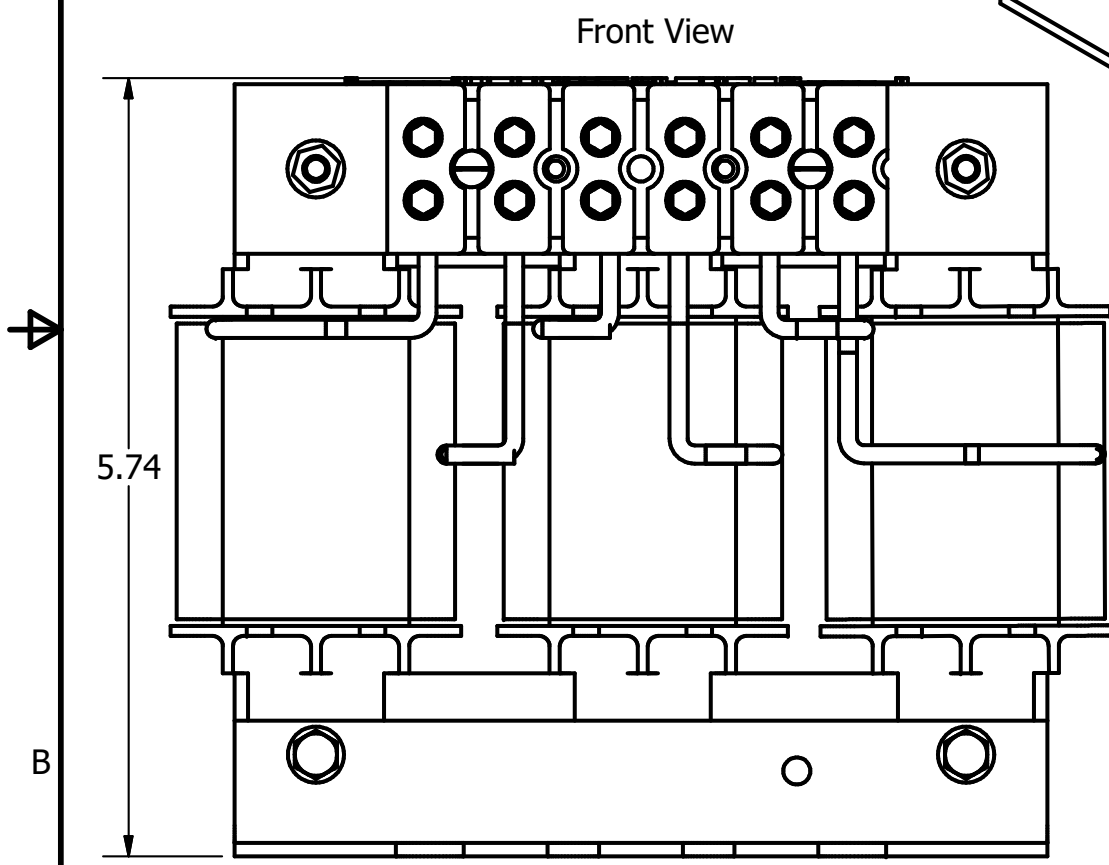
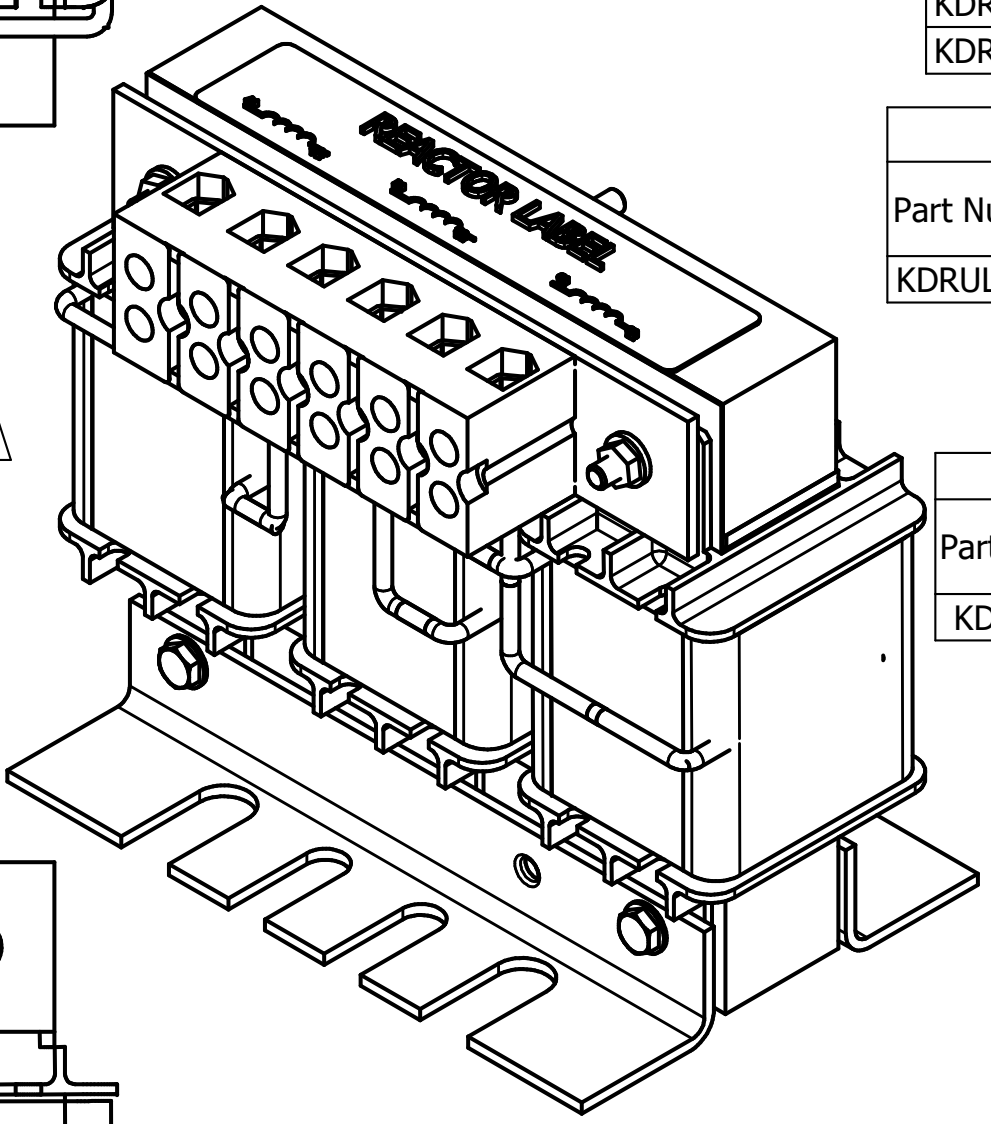


(Customer Connections) Markings On Terminal Block For Reference Only.
 Wire Range: 4-18 AWG.
 Torque : 20 IN-LBS (2.3 Nm)



208/240 Rated Voltage, 600 Max Voltage, High Z, Impedance.

Part Number	Horsepower (HP)	Motor Amps (A)	Maximum Amps (A)	Inductance (uH)	Weight (LBS)	Losses (W)
KDRULC22H	20	59.4	62	278	15	113

480 Rated Voltage, 600 Max Voltage, High Z, Impedance.

Part Number	Horsepower (HP)	Motor Amps (A)	Maximum Amps (A)	Inductance (uH)	Weight (LBS)	Losses (W)
KDRULC3H	20	27	27	1210	15	108
KDRULC1H	25	34	35	980	15	112

575 Rated Voltage, 600 Max Voltage, High Z, Impedance.

Part Number	Horsepower (HP)	Motor Amps (A)	Maximum Amps (A)	Inductance (uH)	Weight (LBS)	Losses (W)
KDRULC43H	25	27	30	1670	15	107

480 Rated Voltage, 600 Max Voltage, Low Z, Impedance.

Part Number	Horsepower (HP)	Motor Amps (A)	Maximum Amps (A)	Inductance (uH)	Weight (LBS)	Losses (W)
KDRULC1L	40	52	55	387	15	114

575 Rated Voltage, 600 Max Voltage, Low Z, Impedance.

Part Number	Horsepower (HP)	Motor Amps (A)	Maximum Amps (A)	Inductance (uH)	Weight (LBS)	Losses (W)
KDRULC43L	40	41	41	672	15	109
KDRULC44L	50	52	52	529	15	123

480 Rated Voltage, 600 Max Voltage, Output

Part Number	Horsepower (HP)	Motor Amps (A)	Maximum Amps (A)	Inductance (uH)	Weight (LBS)	Losses (W)
KDRULC1P	40	52	55	246	15	70

575 Rated Voltage, 600 Max Voltage, Output

Part Number	Horsepower (HP)	Motor Amps (A)	Maximum Amps (A)	Inductance (uH)	Weight (LBS)	Losses (W)
KDRULC31P	50	52	55	237	15	70

TGI (800) 824-8282 transcoll.com

KDRUL Drive Reactor
 KDRUL— Motor Amps —
 3PH, 50/60Hz, —V Rated, 600V Max, —A Max
 40C Amb Max, 135C Rise, RoHS
 Term Torque—B-In

UL LISTED CE
 2500 CONTR. SQ. MM

DATE CODE

- Notes:
1. UL file number: cULus Listed File E116124.
 2. KDR Drive Reactors Comply With The Thermal and Altitude Standards Set Forth by NEMA ST20-1992.
 3. KDR IOM Manual Part Number 30895
 4. NEC Current For 208/240 Volts, Horsepower Based On 208 Volts.
 5. Material(s) Shall be RoHS Compliant
 6. Customer Is Responsible For Installation To Meet All National And Local Electrical Codes.

TGI, LLC CLAIMS PROPRIETARY RIGHTS IN THE MATERIAL HEREIN DISCLOSED. IT IS SUPPLIED WITHOUT PREJUDICE TO ANY PATENT RIGHTS OF TGI AND MAY NOT BE REPRODUCED OR USED TO MANUFACTURE ANYTHING SHOWN THEREIN WITHOUT WRITTEN PERMISSION FROM TGI.				TOLERANCES (EXCEPT AS NOTED) DECIMAL XX ± .25 .XXX ± .10		TGI W132 N10611 Grant Drive Germantown, WI 53022	
B	4686, TB, Screws Change to 1/8 Hex	5/9/19	DSW	FRACTIONAL ± 1/16		KDRUL C Frame, Terminal Block Reactor Drawing	
A	Combined Drawings	1/22/18	DSW	ANGULAR ± 1°		DRN BY: DSW DATE: 1/22/18 SCALE: 1:1.5 APRVD: 107512DG SIZE C	
NO	REVISION	DATE	BY			SHT.2 OF 4	