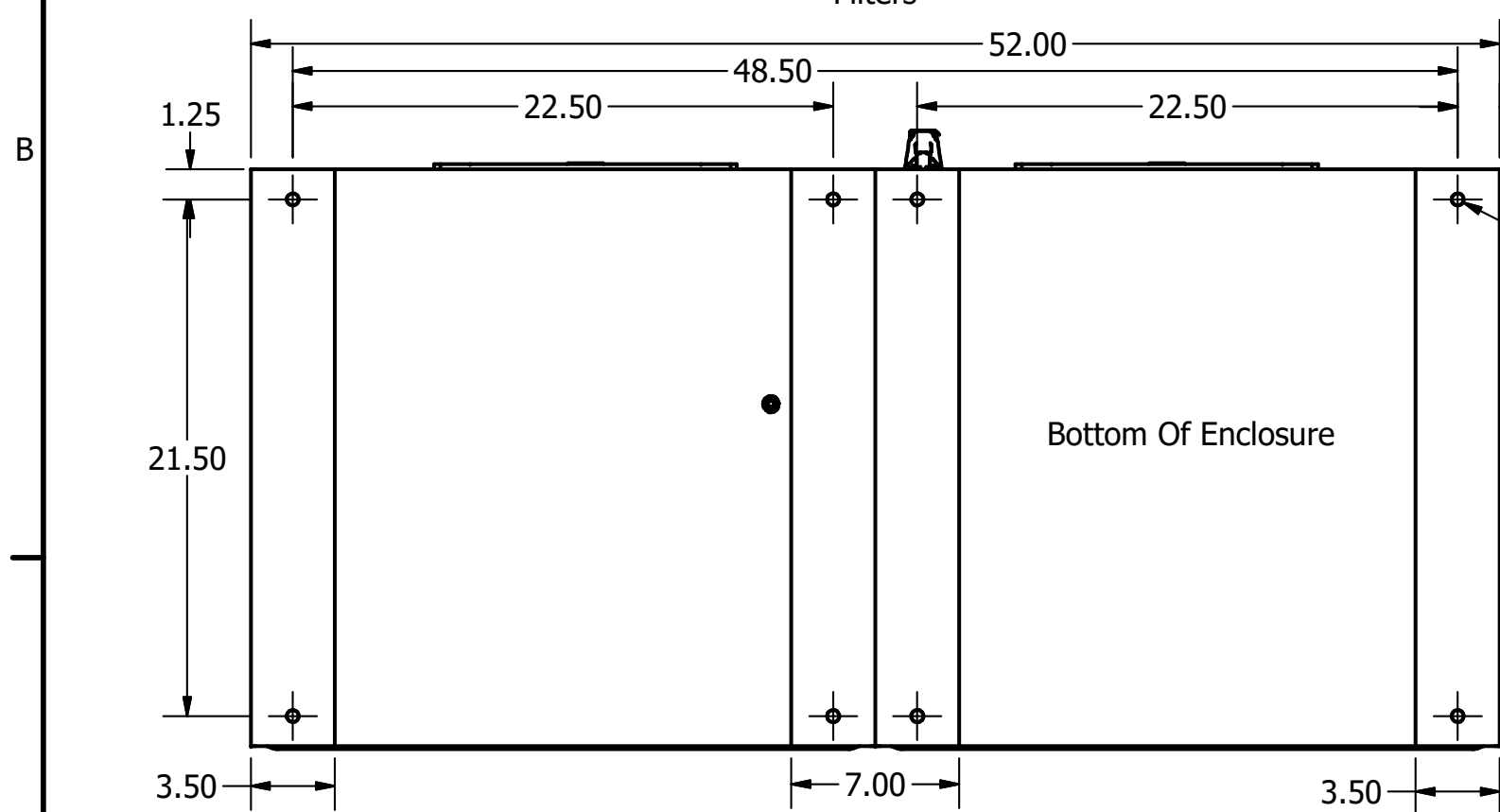
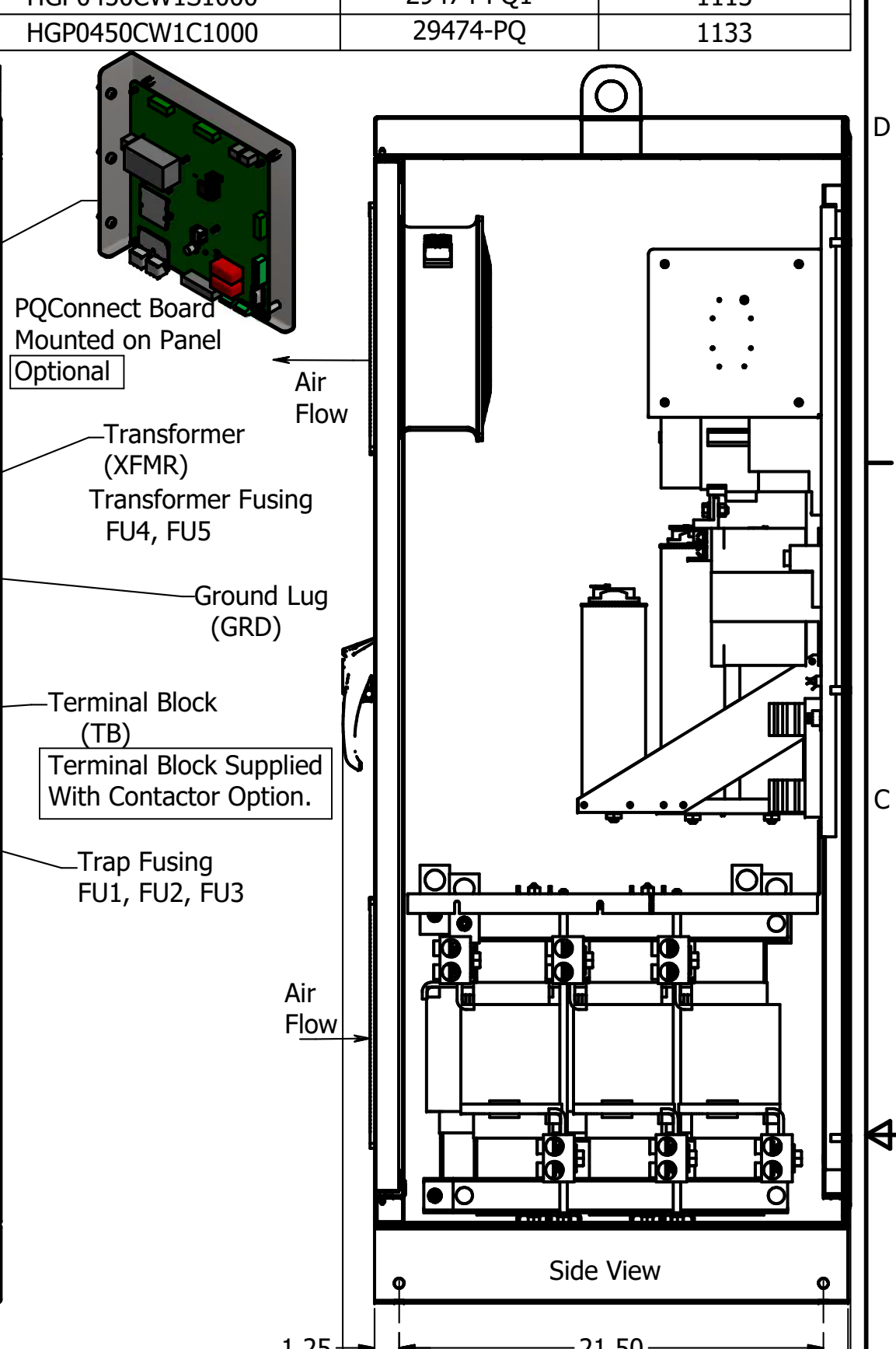
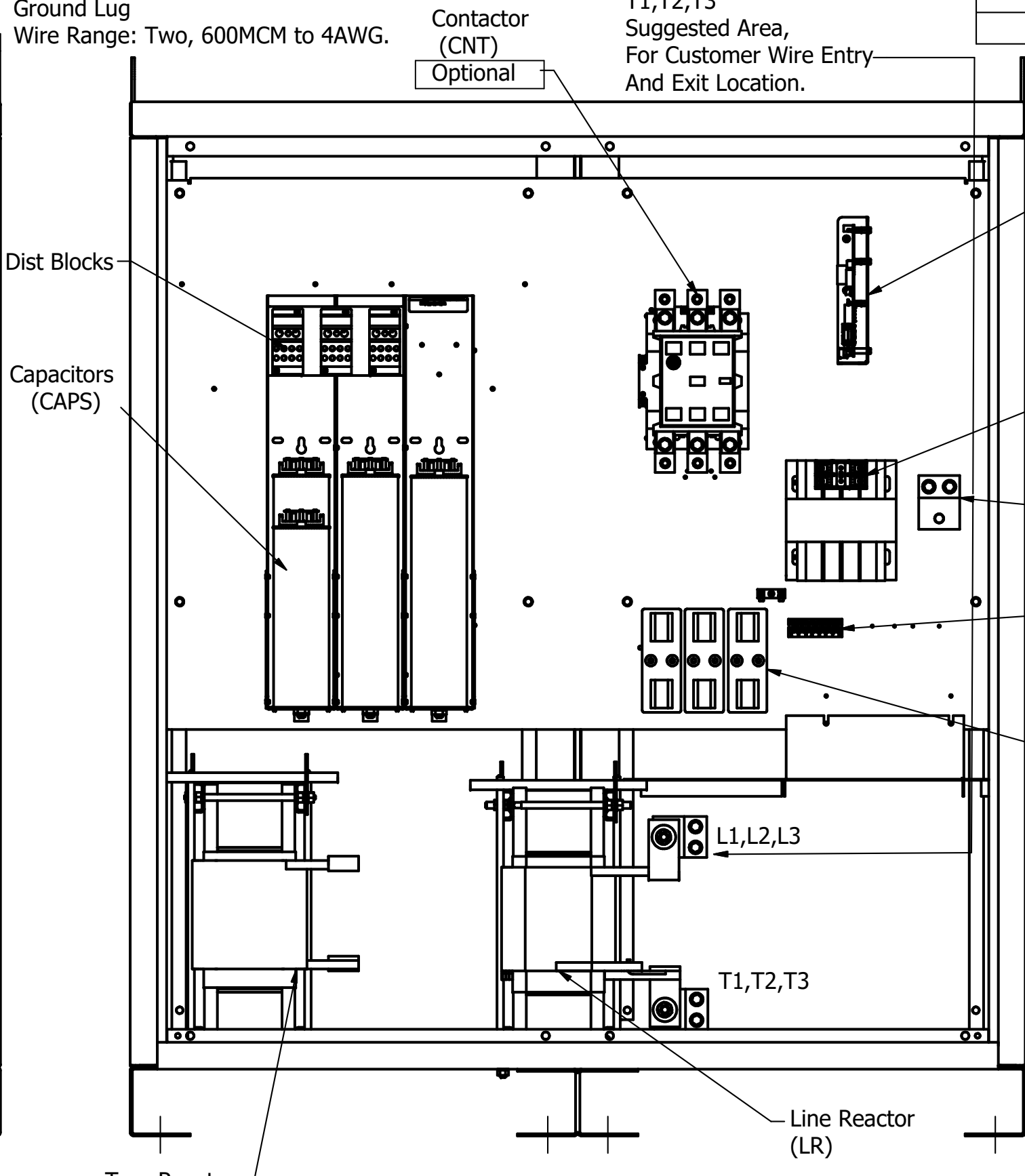
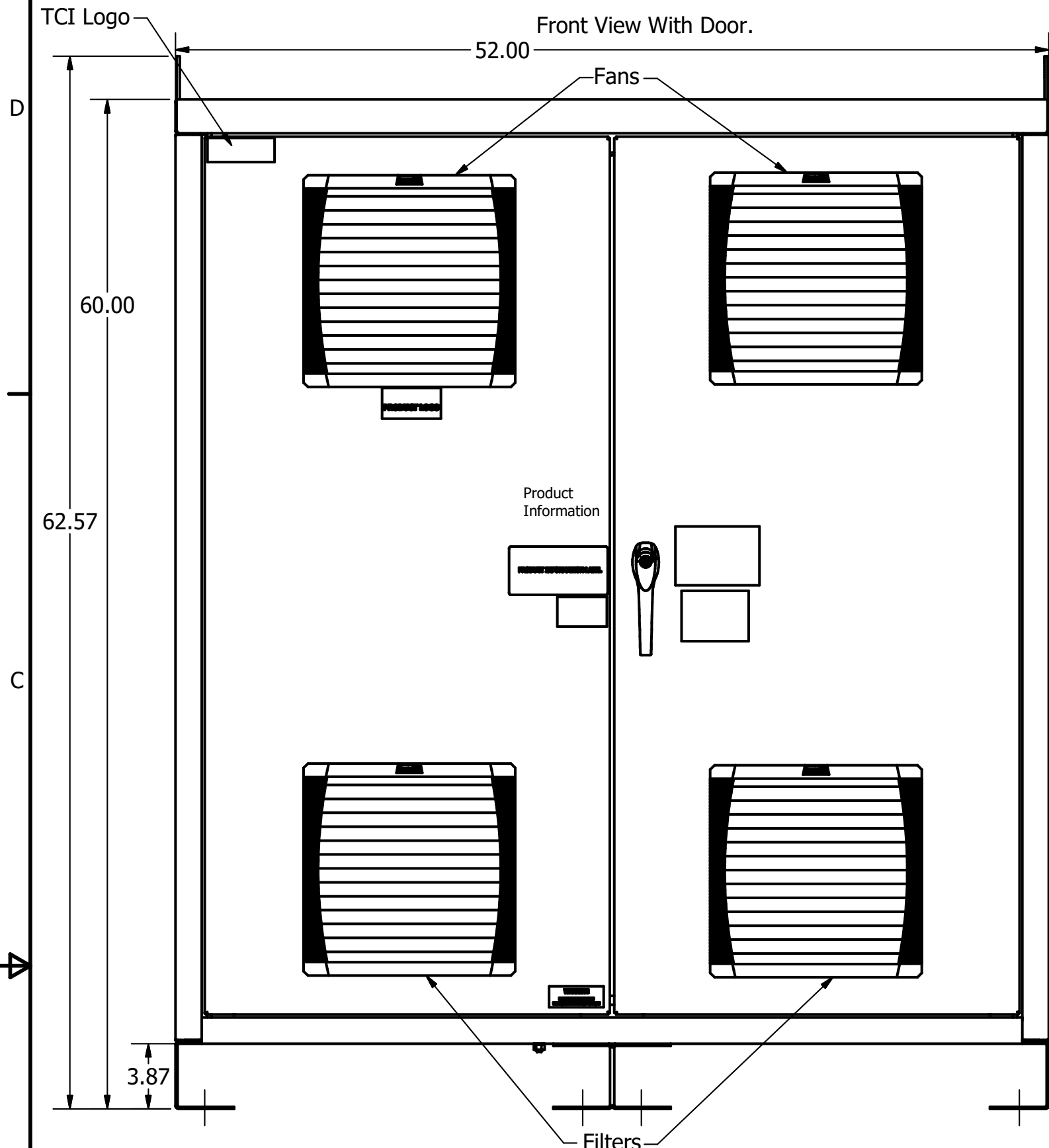


HGP Part Number	HorsePower (HP)	kVar	Harmonic	Voltage (V)	Hz.	Phase
HGP0450CW1---	450	135	5th	600	60	3

Customer Connections.  
L1, L2, L3, T1, T2, T3  
Wire Range: Two, 600MCM to 4AWG.

Note: For Torque Information  
See IOM Manual.

HGP Eclosed Type 1 Part Number	Schematic Drawing #	Approx Weight (LBS)
HGP0450CW1S0000	29474-3	1111
HGP0450CW1C0000	29474-2	1131
HGP0450CW1S1000	29474-PQ1	1113
HGP0450CW1C1000	29474-PQ	1133



Components	HGP0450CW-----			
	1S0000	1C0000	1S1000	1C1000
Line Reactor (LR)	X	X	X	X
Trap Reactor (TR)	X	X	X	X
Capacitor (Cap)	X	X	X	X
Trap Fusing, FU1, FU2, FU3	X	X	X	X
Contactor (CNT)		X		X
Transformer (XFMR)	X	X	X	X
XFMR Fusing, FU4, FU5	X	X	X	X
PQConnect Board			X	X

Customer Is Responsible For Installation to Meet All National And Local Electrical Codes.

Material(s) Shall be RoHS Compliant

TCI, LLC CLAIMS PROPRIETARY RIGHTS IN THE MATERIAL HEREIN DISCLOSED. IT IS SUPPLIED WITHOUT PREJUDICE TO ANY PATENT RIGHTS OF TCI AND MAY NOT BE REPRODUCED OR USED TO MANUFACTURE ANYTHING SHOWN THEREIN WITHOUT WRITTEN PERMISSION FROM TCI.				TOLERANCES (EXCEPT AS NOTED)	<b>TCI</b> W132 N10611 Grant Drive Germantown, WI 53022  HarmonicGuard Passive HGP, 450HP, 600/3/60, Type 1
				DECIMAL	
				.XX ± .25 .XXX ± .10	
				FRACTIONAL ± 1/16	
	A As Designed	8/28/18	DSW	ANGULAR ± 1°	DRN BY: DSW DATE: 8/28/18 SCALE: 1/8 APRVD: 105527DG SIZE: C SHT 1 OF 1