

HGP Open Part Number	Schematic Drawing #	Approx Weight (LBS)
HGP0050CW0S0000	29474	135
HGP0050CW0C0000	29474-1	140
HGP0050CW0S1000	29474-PQ1	138
HGP0050CW0C1000	29474-PQ	143

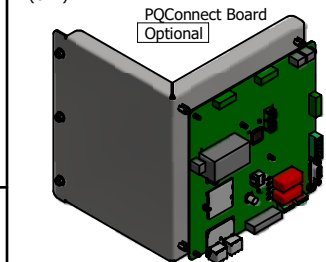
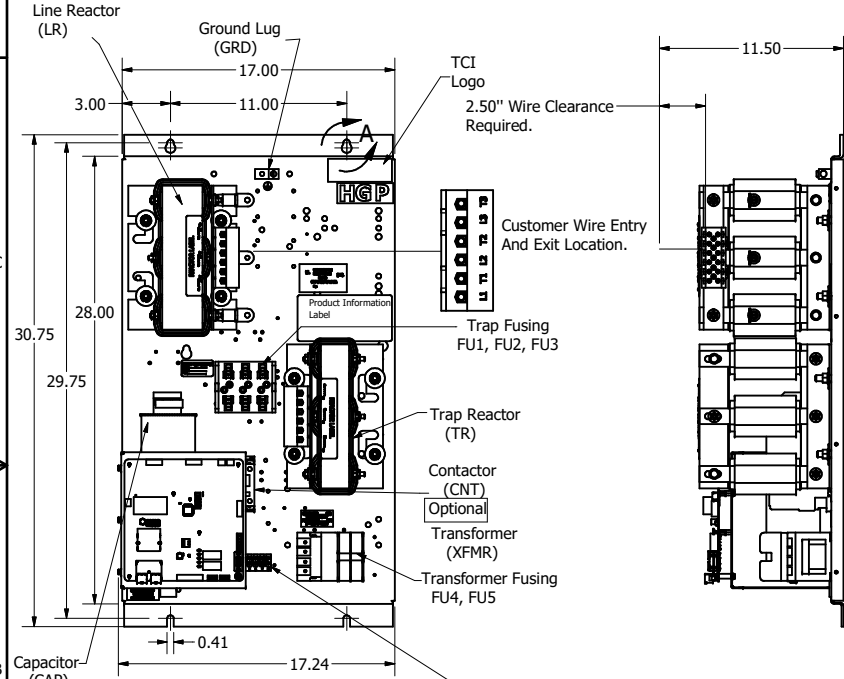
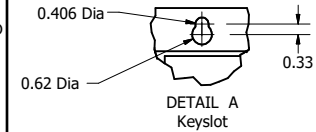
HGP Part Number	HorsePower (HP)	kVar	Harmonic	Voltage (V)	Hz.	Phase
HGP0050CW----	50	15	5th	600	60	3

HGP Enclosed Type 1 Part Number	Schematic Drawing #	Approx Weight (LBS)
HGP0050CW1S0000	29474	200
HGP0050CW1C0000	29474-1	205
HGP0050CW1S1000	29474-PQ1	201
HGP0050CW1C1000	29474-PQ	206

Note: For Torque Information
See IOM Manual

Customer Connections.
L1, T1, L2, T2, L3, T3
Wire Range: 1 AWG to 22 AWG.

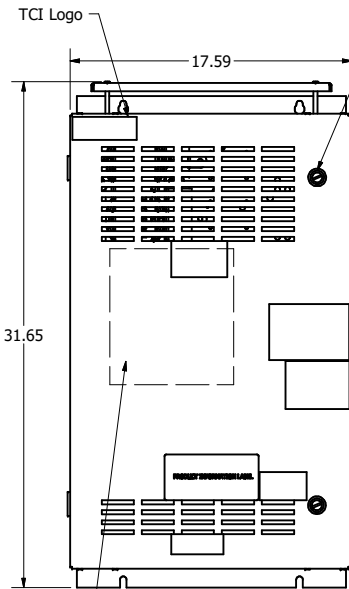
Ground Lug
Wire Range: 1/0 to 14 AWG.



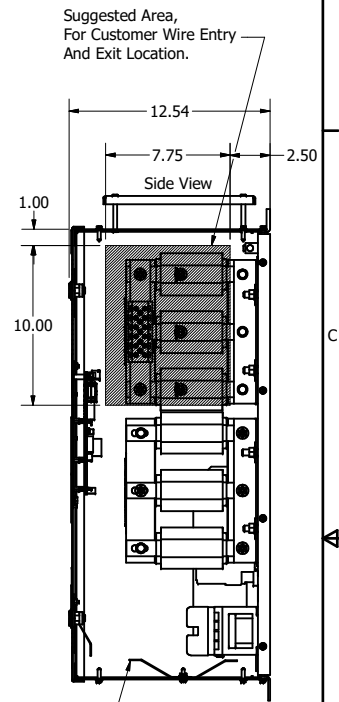
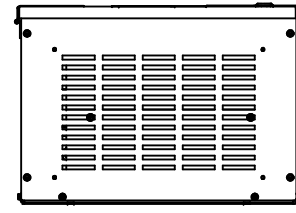
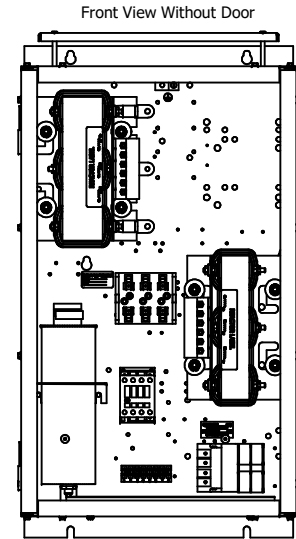
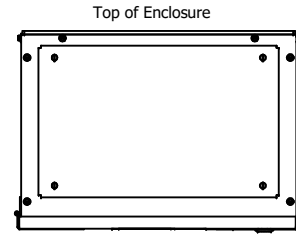
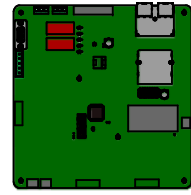
Terminal Block (TB)
Terminal Block Supplied With Contactor Option.

Note: Customer is responsible for proper cooling of filter components on open panels.
Capacitors Maximum Ambient 50°C.

Components	HGP0050CW----			
	0S0000/1S0000	0C0000/1C0000	0S1000/1S1000	0C1000/1C1000
Line Reactor (LR)	X	X	X	X
Trap Reactor (TR)	X	X	X	X
Capacitor (Cap)	X	X	X	X
Trap Fusing, FU1, FU2, FU3	X	X	X	X
Contactor (CNT)		X	X	X
Transformer (XFMR)	X	X	X	X
XFMR Fusing, FU4, FU5	X	X	X	X
PQConnect Board			X	X



PQConnect Board Mounted on Front Door OF Enclosure.
Optional



UL Required Shields
3 Places.

Customer Is Responsible For Installation to Meet All National And Local Electrical Codes.

Material(s) Shall be RoHS Compliant

TCI, LLC CLAIMS PROPRIETARY RIGHTS IN THE MATERIAL HEREIN DISCLOSED. IT IS SUPPLIED WITHOUT PREJUDICE TO ANY PATENT RIGHTS OF TCI AND MAY NOT BE REPRODUCED OR USED TO MANUFACTURE ANYTHING SHOWN THEREIN WITHOUT WRITTEN PERMISSION FROM TCI.	As Designed	8/23/18	DSW	TOLERANCES (EXCEPT AS NOTED) DECIMAL .XX ± .25 .XXX ± .10 FRACTIONAL ± 1/16 ANGULAR ± 1°	W132 N10611 Grant Drive Germantown, WI 53022 HarmonicGuard Passive HGP, 50HP, 480/3/60, Open and Type 1. 105703DG SCALE: 1/8 DATE: 8/23/18 BY: CJS SHEET 1 OF 1
	REVISION	DATE	BY	DATE	