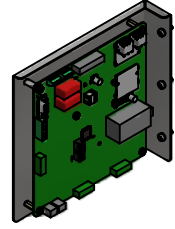


HGP Part Number	Schematic Drawing #	Approx Weight (LBS)
HGP0050AW3S0000	28697-4S	229
HGP0050AW3C0000	28697-4	231
HGP0050AW3C000H	28697-4H	235
HGP0050AW3S1000	29597-PQ1	232
HGP0050AW3C1000	29597-PQ	234
HGP0050AW3C100H	29597-PQH	238

HGP Part Number	HorsePower (HP)	kVar	Maximum Amps (A)	Harmonic	Voltage (V)	Hz.	Phase
HGP0050AW3----	50	15	65	5th	480	60	3

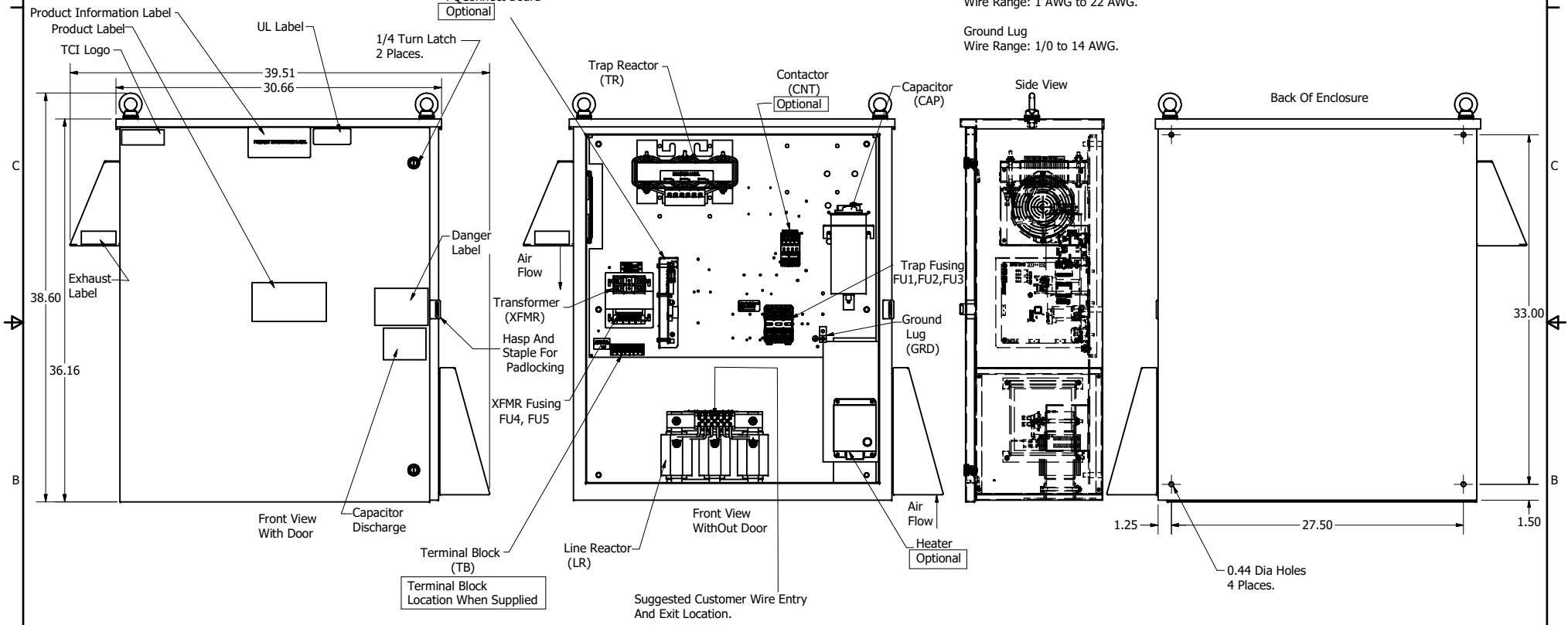


PQConnect Board  
Optional

Note: For Torque Information  
See IOM Manual

Customer Connections.  
L1, T1, L2, T2, L3, T3  
Wire Range: 1 AWG to 22 AWG.

Ground Lug  
Wire Range: 1/0 to 14 AWG.



Components	HGP0050AW3----					
	S0000	C0000	C000H	S1000	C1000	C100H
Line Reactor (LR)	x	x	x	X	X	X
Trap Reactor (TR)	x	x	x	X	X	X
Capacitor (Cap)	x	x	x	X	X	X
Trap Fusing, FU1, FU2, FU3	x	x	x	X	X	X
Contactor (CNT)		x	x		X	X
Transformer (XFMR)	x	x	x	X	X	X
XFMR Fusing, FU4, FU5	x	x	x	X	X	X
Heater			x			X
PQConnect Board				X	X	X

NOTE: USE ONLY HUBS OR FITTINGS THAT COMPLY  
WITH UL514B FOR TYPE 3R ENCLOSURES

Customer Is Responsible For Installation to  
Meet All National And Local Electrical Codes.

Material(s) Shall be RoHS Compliant

THE INFORMATION AND DESIGNS CONTAINED IN THIS DRAWING ARE CONFIDENTIAL AND THE PROPRIETARY PROPERTY OF ALLIED MOTION TECHNOLOGIES INC. AND ITS SUBSIDIARIES. NEITHER THIS DESIGN NOR ANY INFORMATION CONTAINED IN THIS DRAWING MAY BE REPRODUCED OR DISCLOSED TO OTHERS WITHOUT THE EXPRESS WRITTEN CONSENT OF ALLIED MOTION TECHNOLOGIES INC. AND ITS SUBSIDIARIES.					TOLERANCES (EXCEPT AS NOTED)	W182N10611 Grant Drive Germanstown, WI 53022 © 2021 TCI, LLC An Official Motion Company HarmonicGuard Passive, HGP0050AW3---- HGP_50HP_480/3/60_Type 3R 105558DG
					.XX ± .25 .XXX ± .10	
	H	5599-1, CNT, GE to ABB	6/8/2021	DSW	FRACTIONAL	
	G	5265, Enclosure Updated	5/18/2020	DSW	ANGULAR	
	F	Add PQConnect	6/11/18	DSW	± 1°	
NO	REVISION	DATE	BY	SCALE: 1/8	DATE: 1/10/14	REVISED