

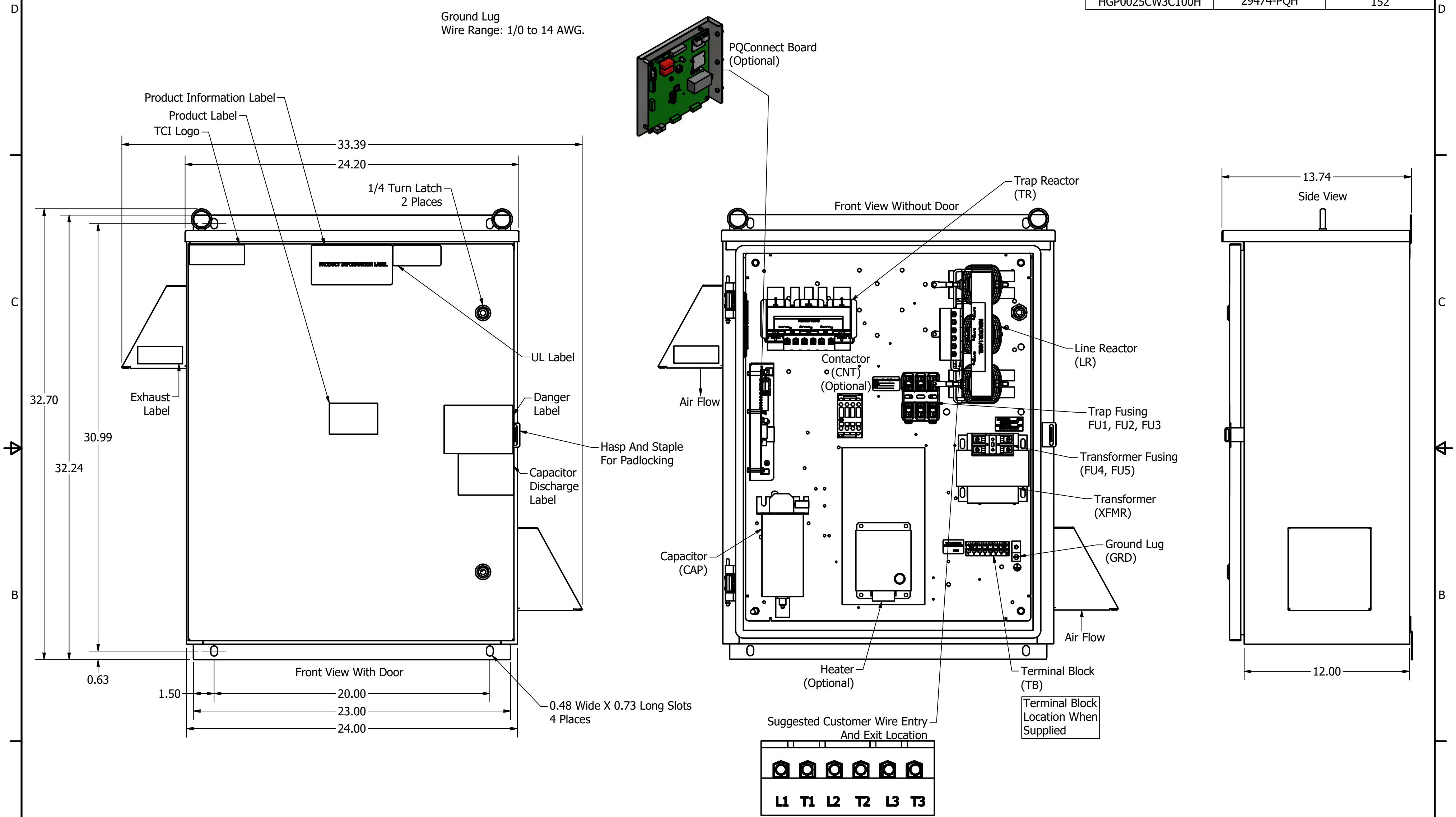
HGP Part Number	HorsePower (HP)	kVar	Harmonic	Voltage (V)	Hz.	Phase
HGP0025CW3----	25	8.3	5th	600	60	3

Note: For Torque Information See IOM Manual

Customer Connections.
L1, T1, L2, T2, L3, T3
Wire Range: 1 AWG to 22 AWG.

Ground Lug
Wire Range: 1/0 to 14 AWG.

HGP Part Number	Schematic Drawing #	Approx Weight (LBS)
HGP0025CW3S0000	29474-4	144
HGP0025CW3C0000	29474-5	145
HGP0025CW3C000H	29474-6	149
HGP0025CW3S1000	29474-PQ1	147
HGP0025CW3C1000	29474-PQ	148
HGP0025CW3C100H	29474-PQH	152



HGP0025CW3----						
Components	S0000	C0000	C000H	S1000	C1000	C100H
Line Reactor (LR)	x	x	x	X	X	X
Trap Reactor (TR)	x	x	x	X	X	X
Capacitor (Cap)	x	x	x	X	X	X
Trap Fusing, FU1, FU2, FU3	x	x	x	X	X	X
Contactor (CNT)		x	x		X	X
Transformer (XFMR)	x	x	x	X	X	X
XFMR Fusing, FU4, FU5	x	x	x	X	X	X
Heater			x			X
PQConnect Board				X	X	X

NOTE: USE ONLY HUBS OR FITTINGS THAT COMPLY WITH UL514B FOR TYPE 3R ENCLOSURES

Customer Is Responsible For Installation to Meet All National And Local Electrical Codes. Material(s) Shall be RoHS Compliant

<p>TCI, LLC CLAIMS PROPRIETARY RIGHTS IN THE MATERIAL HEREIN DISCLOSED. IT IS SUPPLIED WITHOUT PREJUDICE TO ANY PATENT RIGHTS OF TCI AND MAY NOT BE REPRODUCED OR USED TO MANUFACTURE ANYTHING SHOWN THEREIN WITHOUT WRITTEN PERMISSION FROM TCI.</p>	AS DESIGNED	07/08/19	JHM	TOLERANCES (EXCEPT AS NOTED)	<p>TCI W132 N10611 Grant Drive Germantown, WI 53022</p> <p>HarmonicGuard Passive HGP, 25HP, 30HP, 600/3/60, Type 3R</p>
	REVISION	DATE	BY	DECIMAL	
				.XX ± .25 .XXX ± .10	
				FRACTIONAL ± 1/16	
			ANGULAR ± 1°	<p>DRN. BY: JHM DATE: 07/08/19</p> <p>SCALE: 1/5 APRVD: SIZE: 108190DG</p>	