

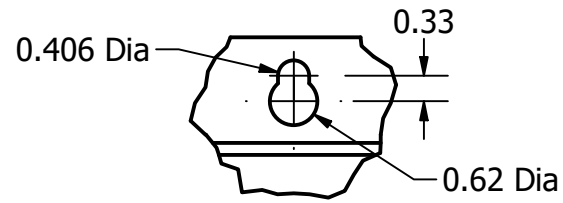
HGP Open Part Number	Schematic Drawing #	Approx Weight (LBS)
HGP0025CW0S0000	31663-S	81
HGP0025CW0C0000	31663-2	85
HGP0025CW0S1000	29474-PQ1	84
HGP0025CW0C1000	29474-PQ	88

HGP Part Number	HorsePower (HP)	kVar	Harmonic	Voltage (V)	Hz.	Phase
HGP0025CW----	25	8.3	5th	600	60	3

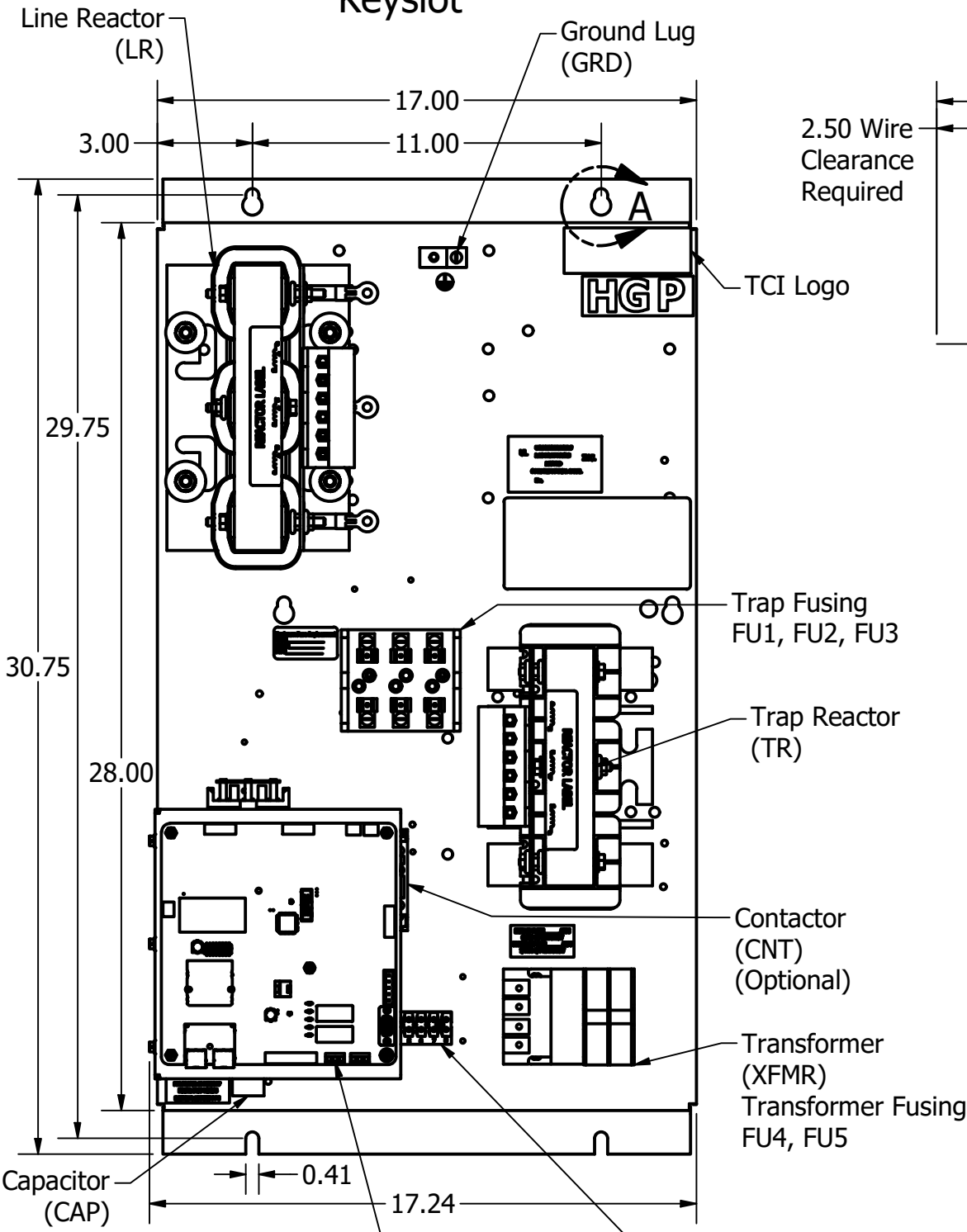
HGP Eclosed Type 1 Part Number	Schematic Drawing #	Approx Weight (LBS)
HGP0025CW1S0000	31663-S	145
HGP0025CW1C0000	31663-2	150
HGP0025CW1S1000	29474-PQ1	146
HGP0025CW1C1000	29474-PQ	151

Note: For Torque Information See IOM Manual  
 Customer Connections.  
 L1, T1, L2, T2, L3, T3  
 Wire Range: 1 AWG to 22 AWG.

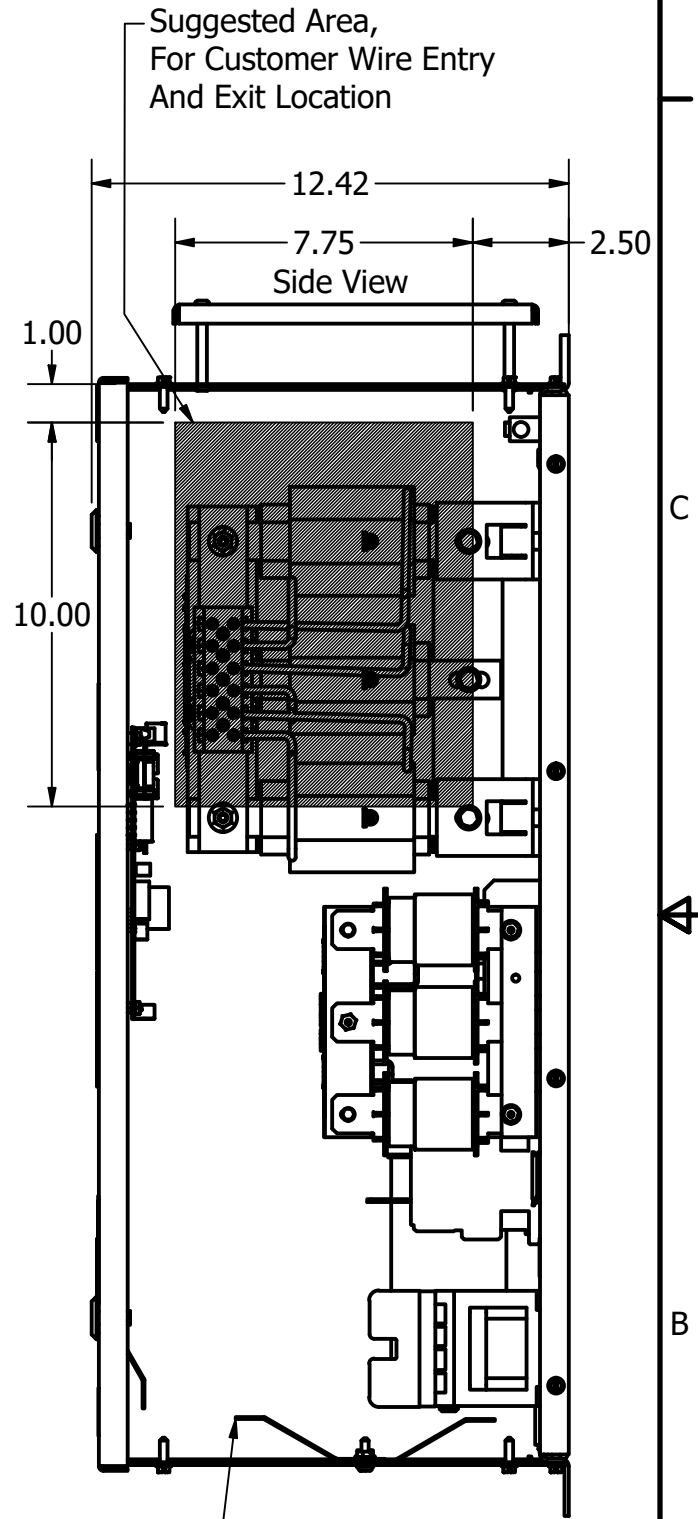
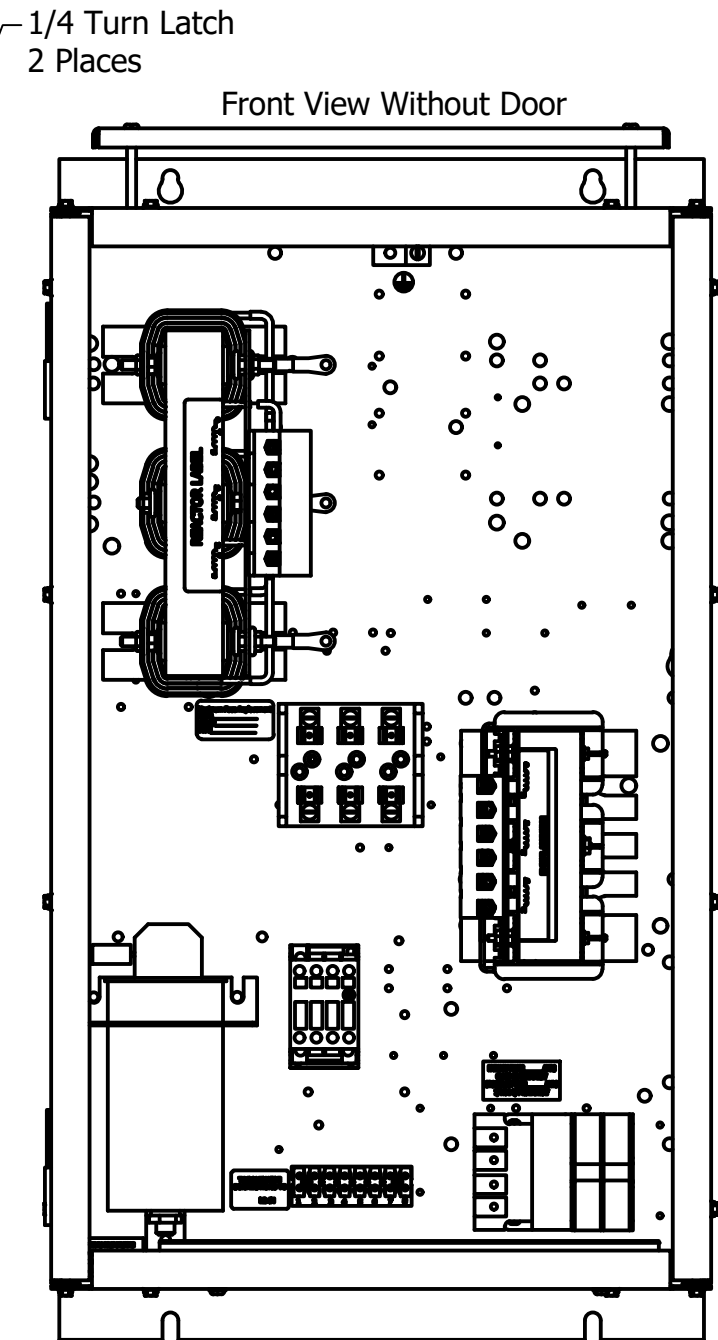
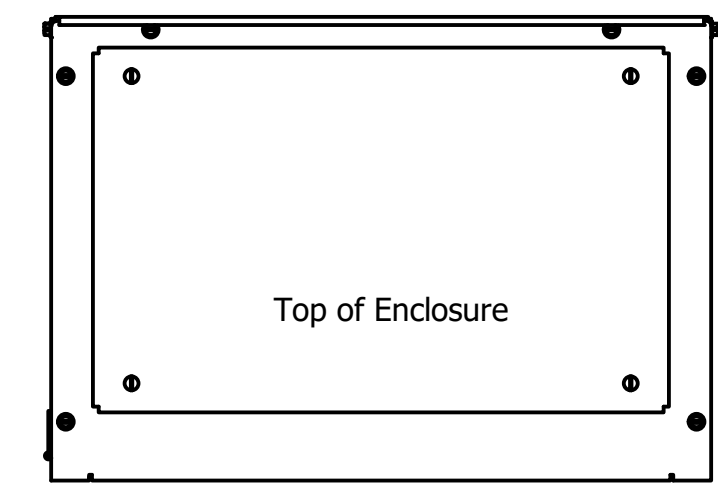
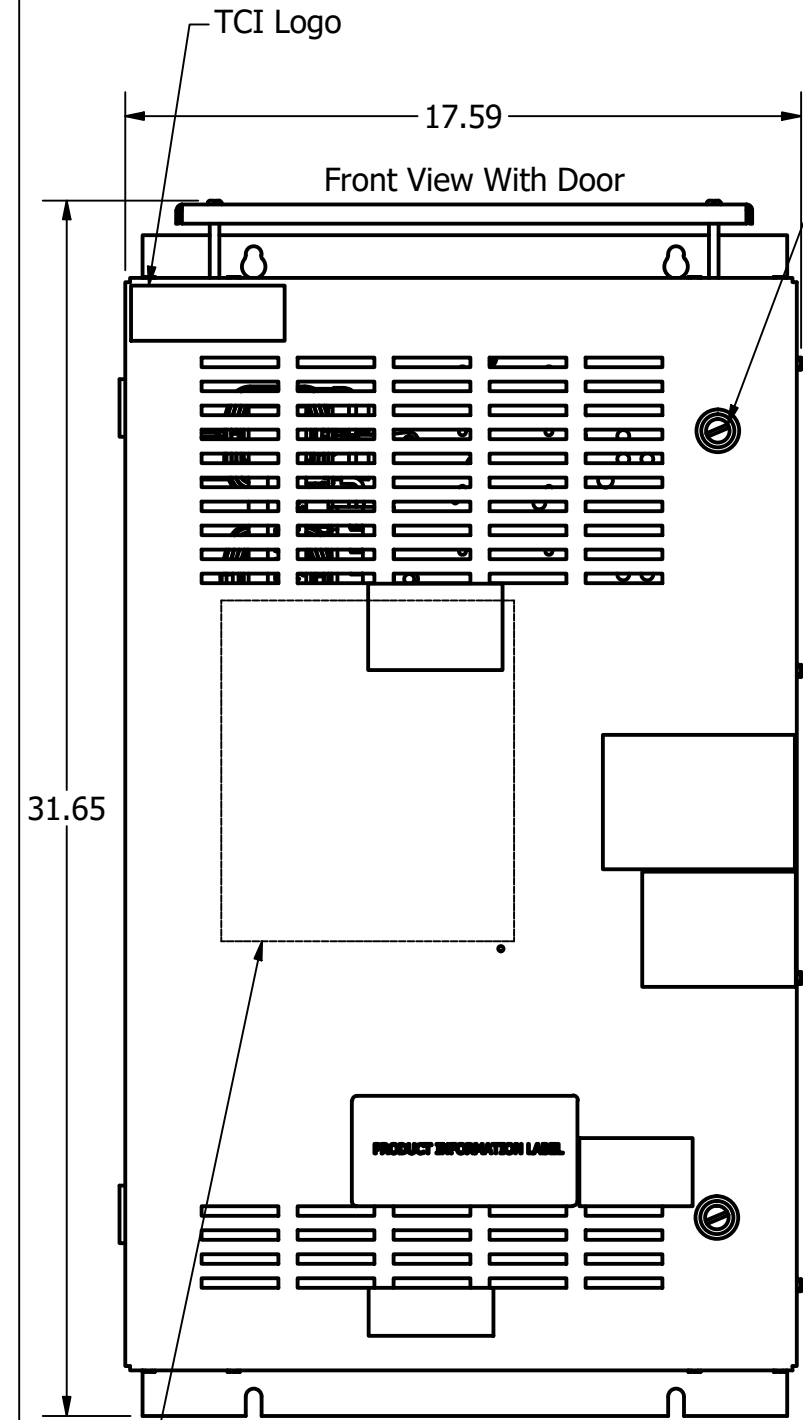
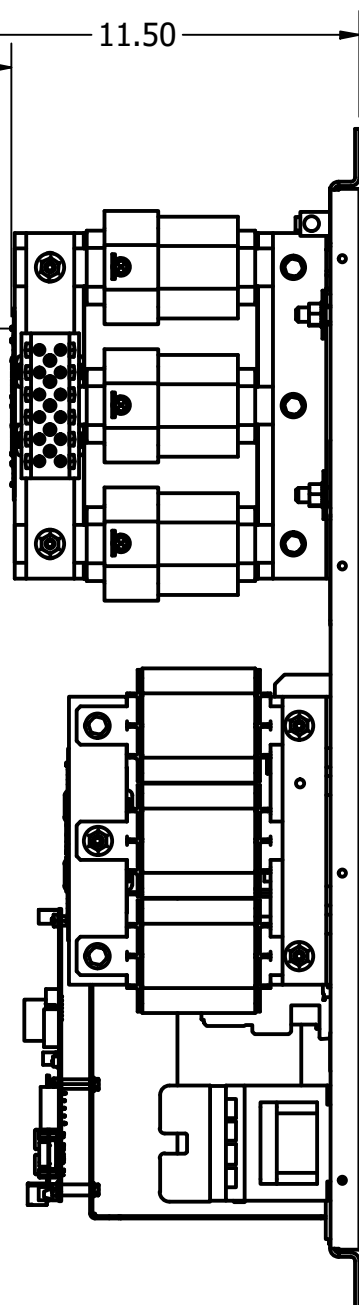
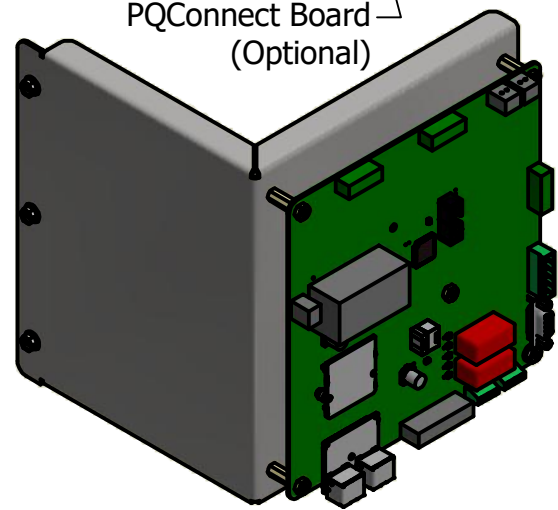
Ground Lug  
 Wire Range: 1/0 to 14 AWG.



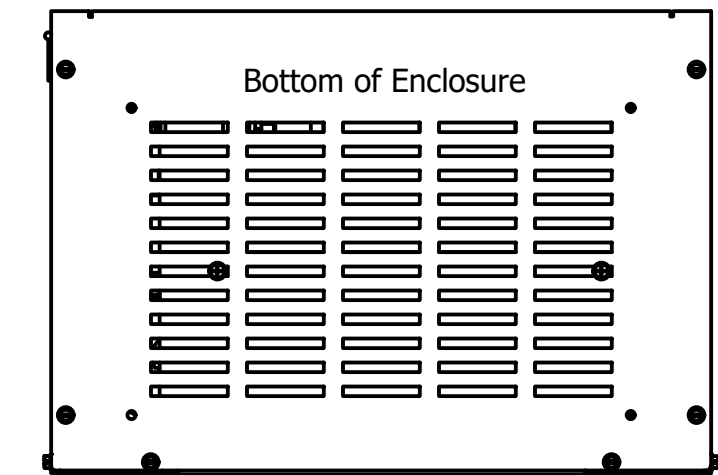
DETAIL A  
Keyslot



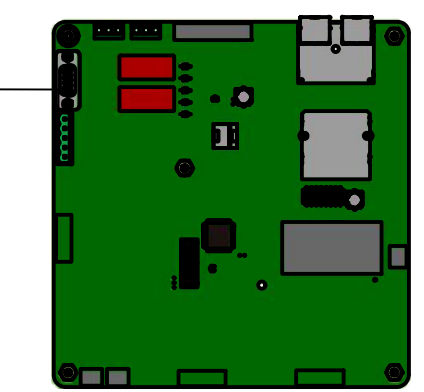
Terminal Block (TB)  
 Terminal Block Location When Supplied.



UL Required Shields  
 3 Places



Note: Customer is responsible for proper cooling of filter components on open panels.  
 Capacitors Maximum Ambient 50°C.



PQConnect Board Mounted on Front Door OF Enclosure. (Optional)

Components	HGP0025CW----			
	0S0000/1S0000	0C0000/1C0000	0S1000/1S1000	0C1000/1C1000
Line Reactor (LR)	X	X	X	X
Trap Reactor (TR)	X	X	X	X
Capacitor (Cap)	X	X	X	X
Trap Fusing, FU1, FU2, FU3	X	X	X	X
Contactor (CNT)		X		X
Transformer (XFMR)	X	X	X	X
XFMR Fusing, FU4, FU5	X	X	X	X
PQConnect Board			X	X

TCI, LLC CLAIMS PROPRIETARY RIGHTS IN THE MATERIAL HEREIN DISCLOSED. IT IS SUPPLIED WITHOUT PREJUDICE TO ANY PATENT RIGHTS OF TCI AND MAY NOT BE REPRODUCED OR USED TO MANUFACTURE ANYTHING SHOWN THEREIN WITHOUT WRITTEN PERMISSION FROM TCI.

NO.	REVISION	DATE	BY
A	AS DESIGNED	06/25/19	JHM

Material(s) Shall be RoHS Compliant

**TCI** W132 N10611 Grant Drive  
 Germantown, WI 53022

HarmonicGuard Passive  
 HGP, 25HP, 600/3/60, Open and Type 1

DRN BY: JHM DATE: 06/25/19 108184DG  
 SCALE: 1/5 APRVD: SIZE: C SHT 1 OF 1