

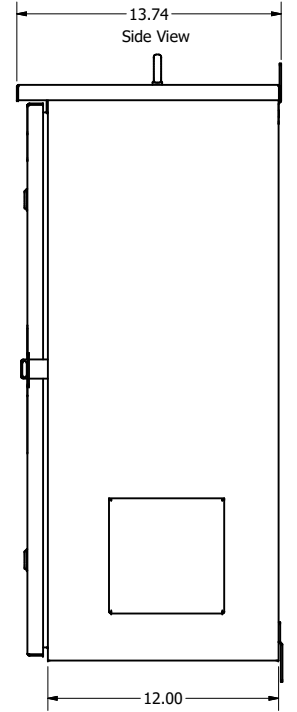
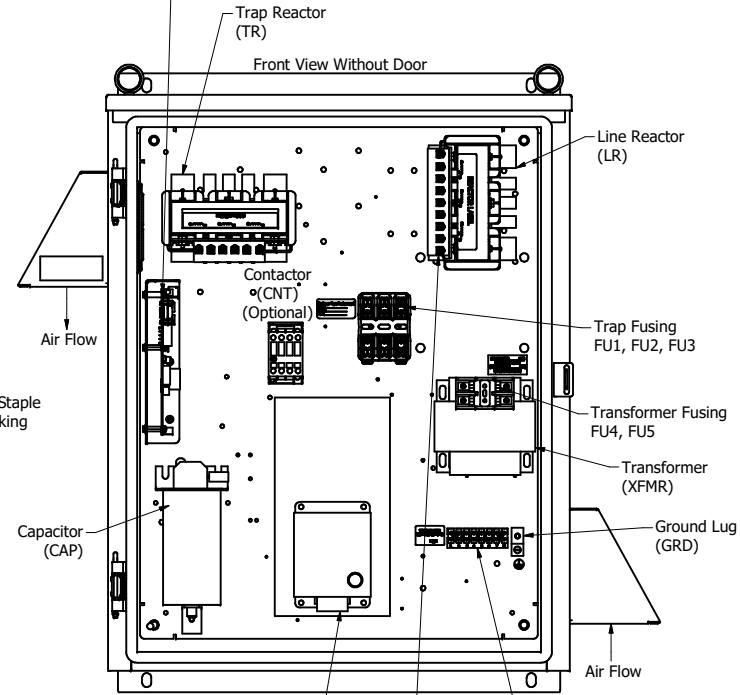
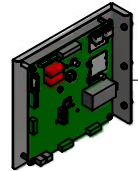
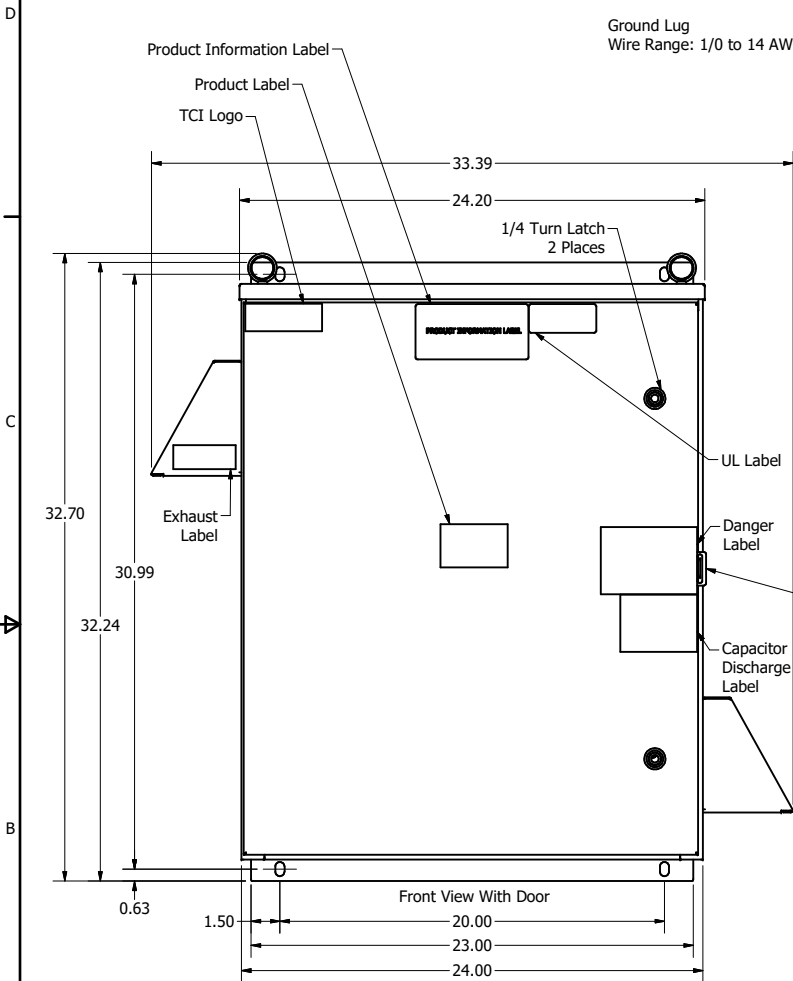
| HGP Part Number | HorsePower (HP) | kVar | Harmonic | Voltage (V) | Hz. | Phase |
|-----------------|-----------------|------|----------|-------------|-----|-------|
| HGP0020CW3---- | 20 | 6.0 | 5th | 600 | 60 | 3 |

Note: For Torque Information See IOM Manual

Customer Connections.
L1, T1, L2, T2, L3, T3
Wire Range: 1 AWG to 22 AWG.

Ground Lug
Wire Range: 1/0 to 14 AWG.

| HGP Part Number | Schematic Drawing # | Approx Weight (LBS) |
|-----------------|---------------------|---------------------|
| HGP0020CW3S0000 | 29474-4 | 124 |
| HGP0020CW3C0000 | 29474-5 | 125 |
| HGP0020CW3C000H | 29474-6 | 129 |
| HGP0020CW3S1000 | 29474-PQ1 | 127 |
| HGP0020CW3C1000 | 29474-PQ | 128 |
| HGP0020CW3C100H | 29474-PQH | 132 |



| Components | HGP0020CW3---- | | | | | |
|----------------------------|----------------|-------|-------|-------|-------|-------|
| | S0000 | C0000 | C000H | S1000 | C1000 | C100H |
| Line Reactor (LR) | x | x | x | X | X | X |
| Trap Reactor (TR) | x | x | x | X | X | X |
| Capacitor (Cap) | x | x | x | X | X | X |
| Trap Fusing, FU1, FU2, FU3 | x | x | x | X | X | X |
| Contactor (CNT) | | x | x | | X | X |
| Transformer (XFMR) | x | x | x | X | X | X |
| XFMR Fusing, FU4, FU5 | x | x | x | X | X | X |
| Heater | | | x | | | X |
| PQConnect Board | | | | X | X | X |

NOTE: USE ONLY HUBS OR FITTINGS THAT COMPLY WITH UL514B FOR TYPE 3R ENCLOSURES

TCI, LLC CLAIMS PROPRIETARY RIGHTS IN THE MATERIAL HEREIN DISCLOSED. IT IS SUPPLIED WITHOUT PREDJUDICE TO ANY PATENT RIGHTS OF TCI AND MAY NOT BE REPRODUCED OR USED TO MANUFACTURE ANYTHING SHOWN THEREIN WITHOUT WRITTEN PERMISSION FROM TCI.

| TOLERANCES (EXCEPT AS NOTED) | | | |
|------------------------------|-------|--|--|
| DECIMAL | | | |
| .XX | ± .25 | | |
| .XXX | ± .10 | | |
| FRACTIONAL | | | |
| ± 1/16 | | | |
| ANGULAR | | | |
| ± 1° | | | |

Customer Is Responsible For Installation to Meet All National And Local Electrical Codes. Material(s) Shall be RoHS Compliant

TCI W132 N10611 Grant Drive
Germantown, WI 53022

HarmonicGuard Passive
HGP, 20HP, 30HP, 600/3/60, Type 3R

DATE: 07/03/19
SCALE: 1/5
REVISED: 07/03/19
BY: JHM
DATE: 07/03/19
BY: JHM
DATE: 07/03/19
BY: JHM

108189DG
SHT 1 OF 1