

HGP Open Part Number	Schematic Drawing #	Approx Weight (LBS)
HGP0010CW0S0000	31663	41
HGP0010CW0C0000	31663-1	45
HGP0010CW0S1000	31663-PQ1	43
HGP0010CW0C1000	31663-PQ	48

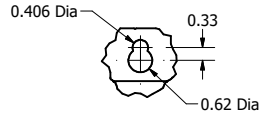
HGP Part Number	HorsePower (HP)	kVar	Harmonic	Voltage (V)	Hz.	Phase
HGP0010CW----	10	3.1	5th	600	60	3

HGP Enclosed Type 1 Part Number	Schematic Drawing #	Approx Weight (LBS)
HGP0010CW1S0000	31663	66
HGP0010CW1C0000	31663-1	70
HGP0010CW1S1000	31663-PQ1	68
HGP0010CW1C1000	31663-PQ	73

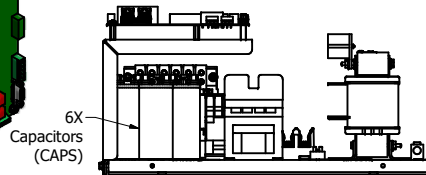
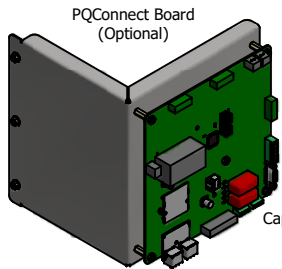
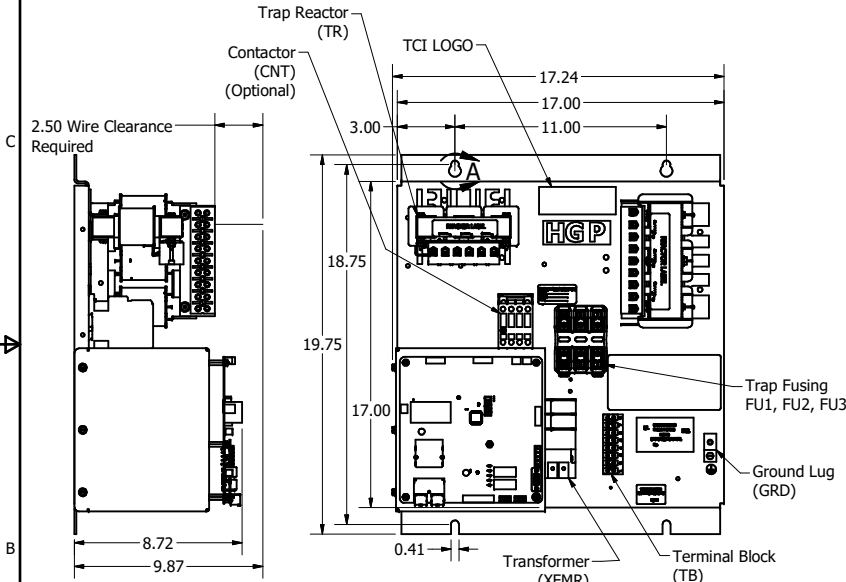
Note: For Torque Information
See IOM Manual

Customer Connections.
L1, T1, L2, T2, L3, T3
Wire Range: 1 AWG to 22 AWG.

Ground Lug
Wire Range: 1/0 to 14 AWG.

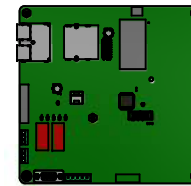
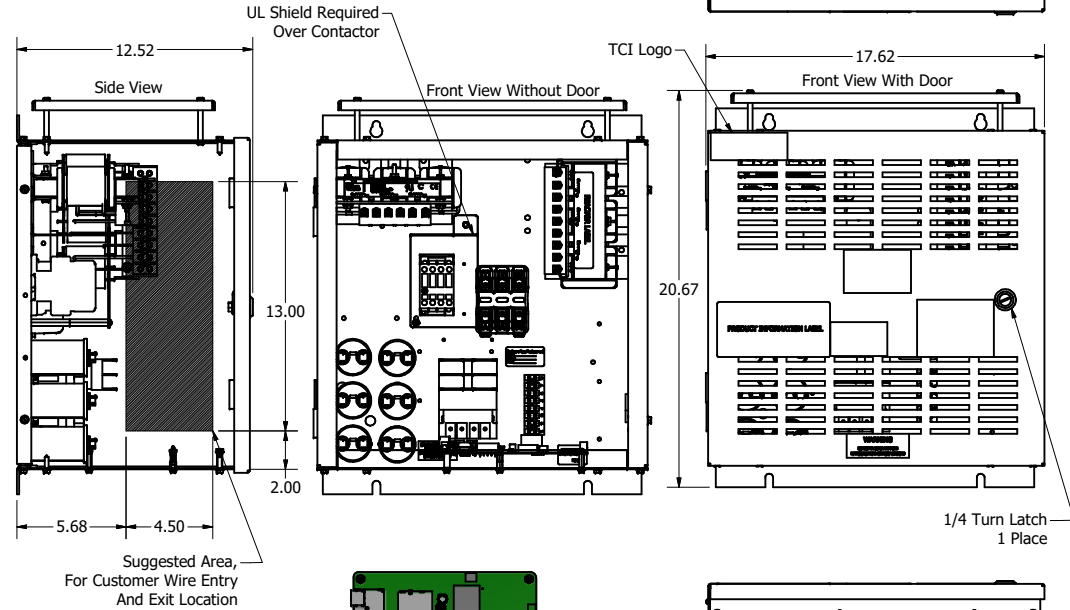


DETAIL A
Keyslot



Terminal Block Location
When Supplied.

Note: Customer is responsible
for proper cooling of filter
components on open panels.
Capacitors Maximum Ambient 50°C.



PQConnect Board
Mounted on Bottom
of Enclosure.
(Optional)

HGP0010CW----				
Components	0S0000/1S0000	0C0000/1C0000	0S1000/1S1000	0C1000/1C1000
Line Reactor (LR)	X	X	X	X
Trap Reactor (TR)	X	X	X	X
Capacitor (Cap)	X	X	X	X
Trap Fusing, FU1, FU2, FU3	X	X	X	X
Contactor (CNT)		X		X
Transformer (XFMR)		X	X	X
XFMR Fusing, FU4, FU5		X	X	X
PQConnect Board			X	X

TCI, LLC CLAIMS PROPRIETARY RIGHTS IN THE MATERIAL HEREIN DISCLOSED. IT IS SUPPLIED WITHOUT PREJUDICE TO ANY PATENT RIGHTS OF TCI AND MAY NOT BE REPRODUCED OR USED TO MANUFACTURE ANYTHING SHOWN THEREIN WITHOUT WRITTEN PERMISSION FROM TCI.

TOLERANCES (EXCEPT AS NOTED)			
DECIMAL			
.XX	± .25		
.XXX	± .10		
FRACTIONAL			
± 1/16			
ANGULAR			
± 1°			

Material(s) Shall be RoHS Compliant

TCI W132 N10611 Grant Drive
Germantown, WI 53022

HarmonicGuard Passive
HGP, 10HP, 600/3/60, Open and Type 1

DESIGNED BY: JHM	DATE: 06/14/19	108182DG
SCALE:	DRAWN BY:	REV:

SHT 1 OF 1