

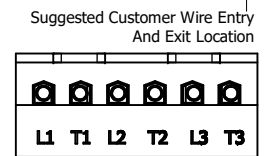
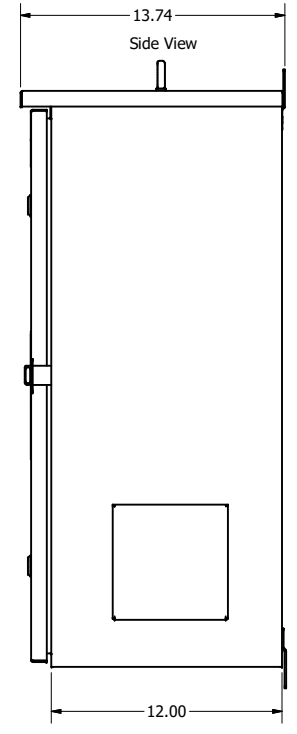
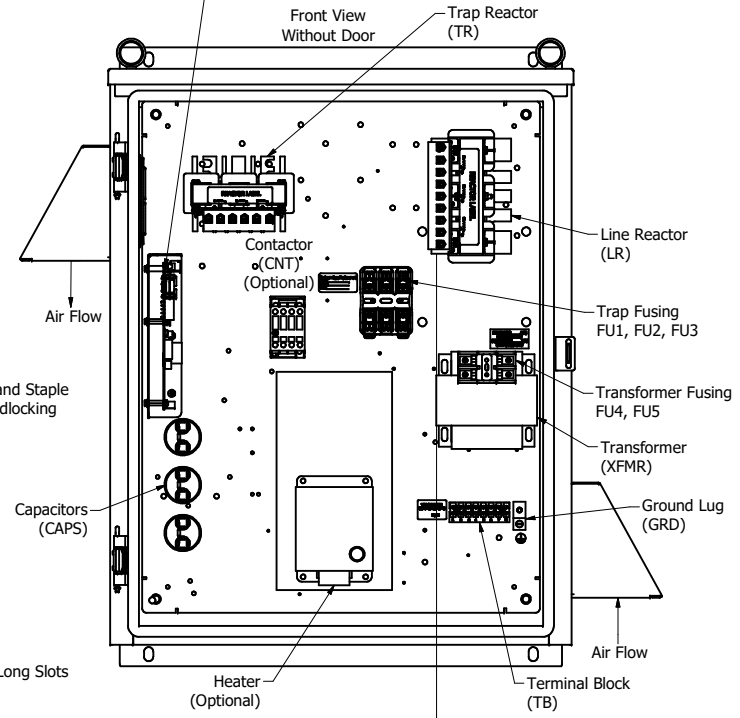
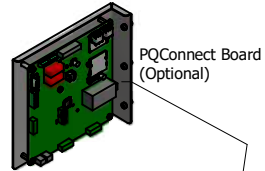
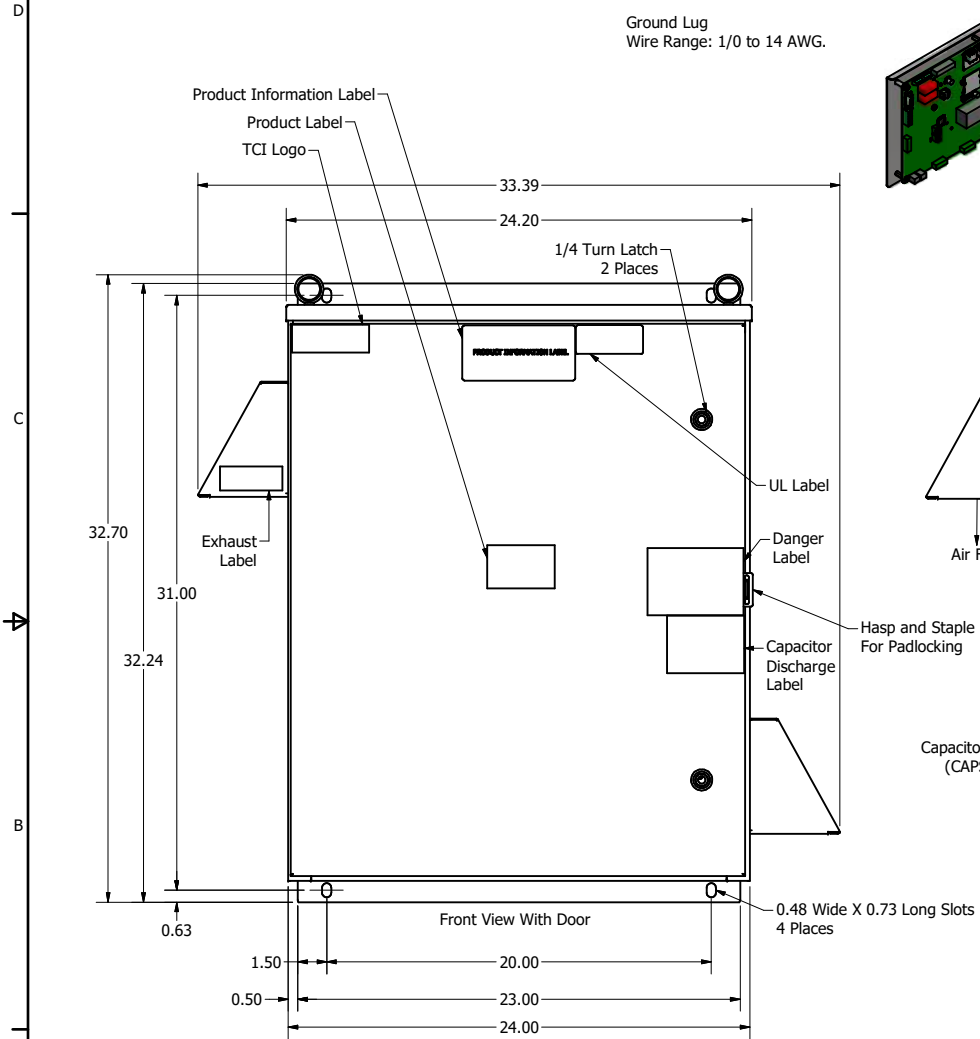
HGP Part Number	HorsePower (HP)	kVar	Harmonic	Voltage (V)	Hz.	Phase
HGP0003CW3----	3	1.0	5th	600	60	3

Note: For Torque Information See IOM Manual

Customer Connections.
L1, T1, L2, T2, L3, T3
Wire Range: 1 AWG to 22 AWG.

Ground Lug
Wire Range: 1/0 to 14 AWG.

HGP Part Number	Schematic Drawing #	Approx Weight (LBS)
HGP0003CW3S0000	31663-3	105
HGP0003CW3C0000	31663-4	106
HGP0003CW3C000H	31663-5	110
HGP0003CW3S1000	31663-PQ1	108
HGP0003CW3C1000	31663-PQ	109
HGP0003CW3C100H	31663-PQH	113



Components	HGP0003CW3----					
	S0000	C0000	C000H	S1000	C1000	C100H
Line Reactor (LR)	x	x	x	X	X	X
Trap Reactor (TR)	x	x	x	X	X	X
Capacitor (Cap)	x	x	x	X	X	X
Trap Fusing, FU1, FU2, FU3	x	x	x	X	X	X
Contactors (CNT)		x	x		X	X
Transformer (XFMR)	x	x	x	X	X	X
XFMR Fusing, FU4, FU5	x	x	x	X	X	X
Heater			x			X
PQConnect Board				X	X	X

NOTE: USE ONLY HUBS OR FITTINGS THAT COMPLY WITH UL514B FOR TYPE 3R ENCLOSURES

TCI, LLC CLAIMS PROPRIETARY RIGHTS IN THE MATERIAL HEREIN DISCLOSED. IT IS SUPPLIED WITHOUT PREJUDICE TO ANY PATENT RIGHTS OF TCI AND MAY NOT BE REPRODUCED OR USED TO MANUFACTURE ANYTHING SHOWN THEREIN WITHOUT WRITTEN PERMISSION FROM TCI.

AS DESIGNED	07/01/19	JHM	± 1/16
REVISION	DATE	BY	± 1"

Customer Is Responsible For Installation to Meet All National And Local Electrical Codes.

Material(s) Shall be RoHS Compliant

TCI W132 N10611 Grant Drive Germantown, WI 53022

HarmonicGuard Passive
HGP, 3HP, 30HP, 600/3/60, Type 3R

DATE: 07/01/19
SCALE: 1/5
SHT 1 OF 1