

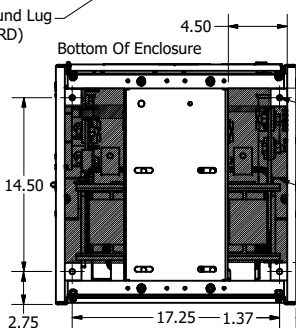
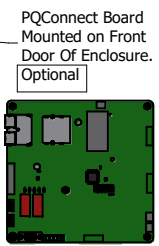
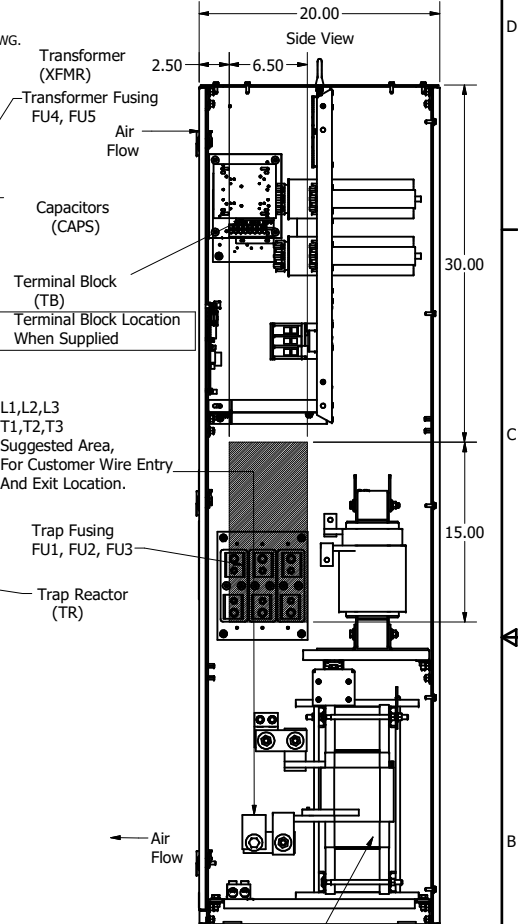
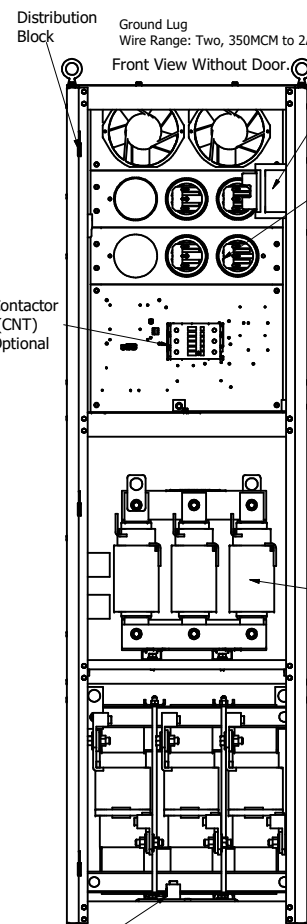
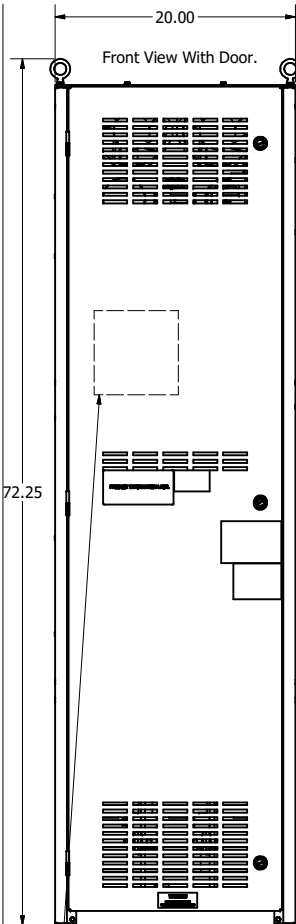
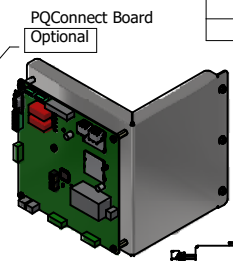
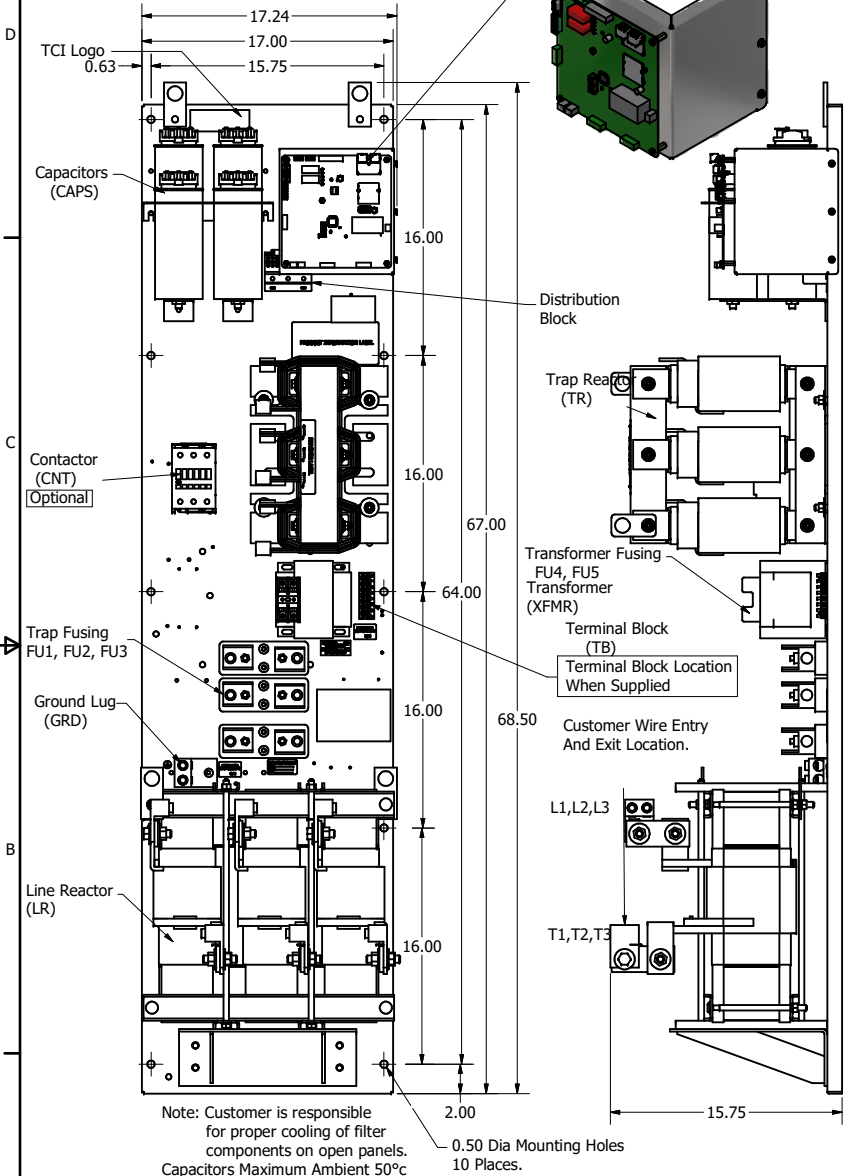
HGL Open Part Number	Schematic Drawing #	Approx Weight (LBS)
HGL0300CW0S0000	30807-1	474
HGL0300CW0C0000	30807	484
HGL0300CW0S1000	30807-PQ1	475
HGL0300CW0C1000	30807-PQ	485

Unit Specifications					
kVar	Harmonic	Volt	HZ.	Phase	HP
50	5TH	600	60	3	300

HGL Enclosed Type 1 Part Number	Schematic Drawing #	Approx Weight (LBS)
HGL0300CW1S0000	30807-1	625
HGL0300CW1C0000	30807	635
HGL0300CW1S1000	30807-PQ1	626
HGL0300CW1C1000	30807-PQ	636

Note: For Torque Information See IOM Manual.

Customer Connections. L1, L2, L3, T1, T2, T3 Wire Range: Two, 350MCM to 2AWG.



HGL0300CW-----				
Components	0S0000/1S0000	0C0000/1C0000	0S1000/1S1000	0C1000/1C1000
Line Reactor (LR)	X	X	X	X
Trap Reactor (TR)	X	X	X	X
Capacitor (Cap)	X	X	X	X
Trap Fusing, FU1, FU2, FU3	X	X	X	X
Contactor (CNT)	X	X	X	X
Transformer (XFMR)	X (Type 1)	X	X	X
XFMR Fusing, FU4, FU5	X (Type 1)	X	X	X
PQConnect Board			X	X

Customer Is Responsible For Installation to Meet All National And Local Electrical Codes.

Material(s) Shall be RoHS Compliant

TCI, LLC CLAIMS PROPRIETARY RIGHTS IN THE MATERIAL HEREIN DISCLOSED. IT IS SUPPLIED WITHOUT PREJUDICE TO ANY PATENT RIGHTS OF TCI AND MAY NOT BE REPRODUCED OR USED TO MANUFACTURE ANYTHING SHOWN THEREIN WITHOUT WRITTEN PERMISSION FROM TCI.				TOLERANCES (EXCEPT AS NOTED) DECIMAL .XX ± .25 .XXX ± .10 FRACTIONAL ± 1/16 ANGULAR ± 1°		W132 N10611 Grant Drive Germantown, WI 53022 HarmonicGuard Low Capacitance HGL, 300HP, 600/3/60, Open and Type 1	
B Add PQ Connect NO REVISION	4/4/19 DATE	DSW BY	10/9/17 DATE	107293DG FILE NO.	1/8 SCALE	10/9/17 DATE	1 SHEET OF 1