

HGL Open Part Number	Schematic Drawing #	Approx Weight (LBS)
HGL0250AW0S00000	30586-1	350
HGL0250AW0C0000	30586	395
HGL0250AW0S*000	30586-PQ1	352
HGL0250AW0C*000	30586-PQ	397

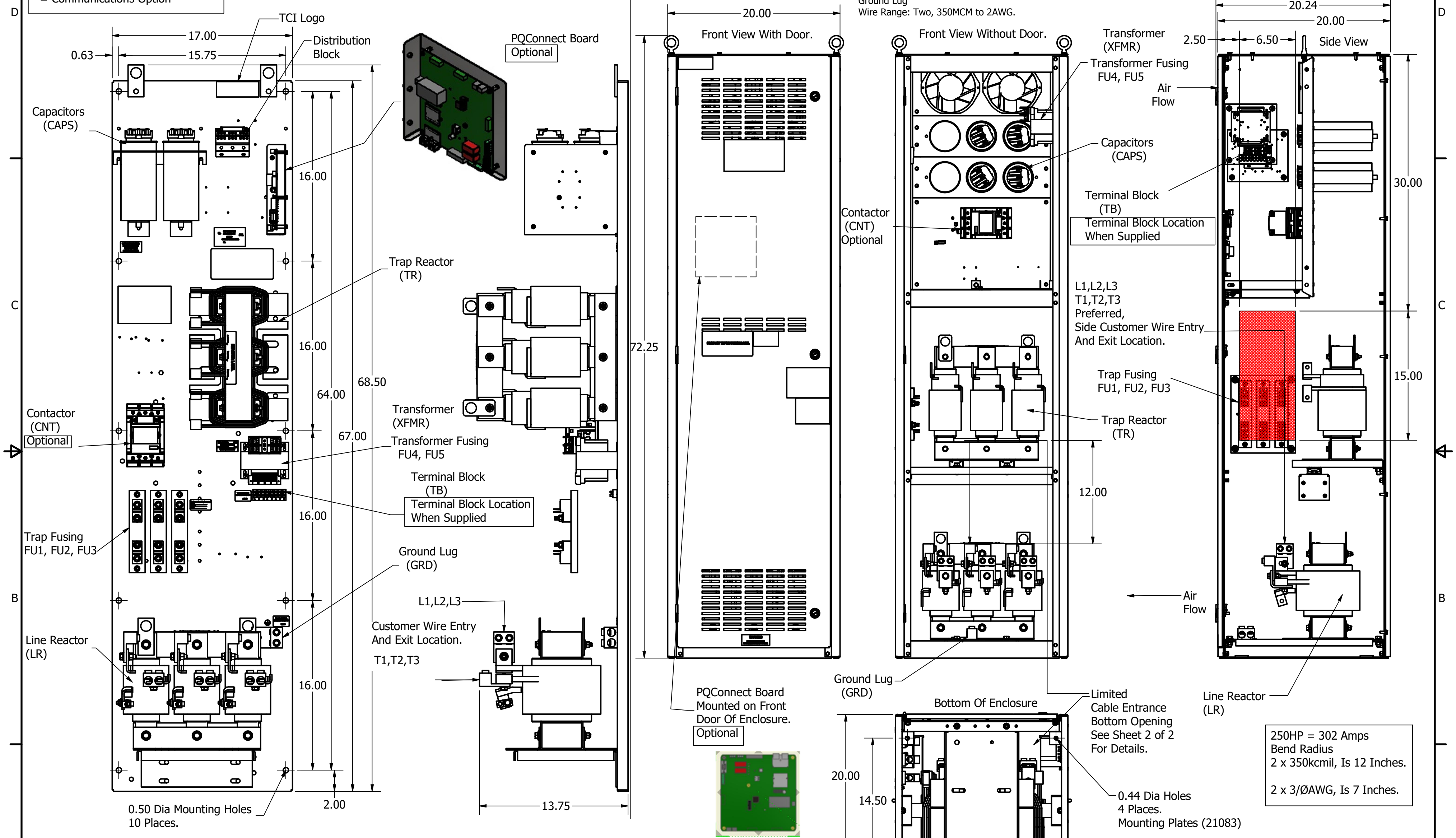
HorsePower (HP)	kVar	Harmonic	Voltage (V)	Maximum Amps (A)	Hz.	Phase
250	40	5th	480	302	60	3

HGL Enclosed Type 1 Part Number	Schematic Drawing #	Approx Weight (LBS)
HGL0250AW1S0000	30586-1	535
HGL0250AW1C0000	30586	545
HGL0250AW1S*000	30586-PQ1	536
HGL0250AW1C*000	30586-PQ	546

Note: For Torque Information See IOM Manual.

Customer Connections. L1, L2, L3, T1, T2, T3 Wire Range: Two, 350MCM to 2AWG.

\* = Communications Option



HGL0250AW----				
Components	0S0000/1S0000	0C0000/1C0000	0S*000/1S*000	0C*000/1C*000
Line Reactor (LR)	X	X	X	X
Trap Reactor (TR)	X	X	X	X
Capacitor (Cap)	X	X	X	X
Trap Fusing, FU1, FU2, FU3	X	X	X	X
Contactor (CNT)		X		X
Transformer (XFMR)	X (Type1)	X	X	X
XFMR Fusing, FU4, FU5	X (Type1)	X	X	X
PQConnect Board			X	X

Note: Customer is responsible for proper cooling of filter components on open panels. Capacitors Maximum Ambient 50°C

THE INFORMATION AND DESIGNS CONTAINED IN THIS DRAWING ARE CONFIDENTIAL AND THE PROPRIETARY PROPERTY OF ALLIED MOTION TECHNOLOGIES INC. AND ITS SUBSIDIARIES. NEITHER THIS DESIGN NOR ANY INFORMATION CONTAINED IN THIS DRAWING MAY BE REPRODUCED OR DISCLOSED TO OTHERS WITHOUT THE EXPRESS WRITTEN CONSENT OF ALLIED MOTION TECHNOLOGIES INC. AND ITS SUBSIDIARIES.

NO	REVISION	DATE	BY	TOLERANCES (EXCEPT AS NOTED)
E	6024, Add PQ Option	8/26/22	GJS	DECIMAL .XX ± .25 .XXX ± .10
D	5653, GE to ABB CNT change	3/10/2022	DSW	FRACTIONAL ± 1/16
C	5471, Drawing Updates, Wire Entry Details	1/25/2021	DSW	ANGULAR ± 1°
B	Add PQ Connect	3/5/2019	DSW	

Customer Is Responsible For Installation to Meet All National And Local Electrical Codes.

Material(s) Shall be RoHS Compliant

**TCL** W132N10611 Grant Drive  
Gemantown, WI 53022  
© 2022 TCL, LLC

HGL0250AW----, HGL  
250HP, 480/3/60, Open and Type 1

DRN: DSW DATE: 3/30/2017 107022DG  
SCALE: 1/8 APRVD: SIZE C SHT 1 OF 2