

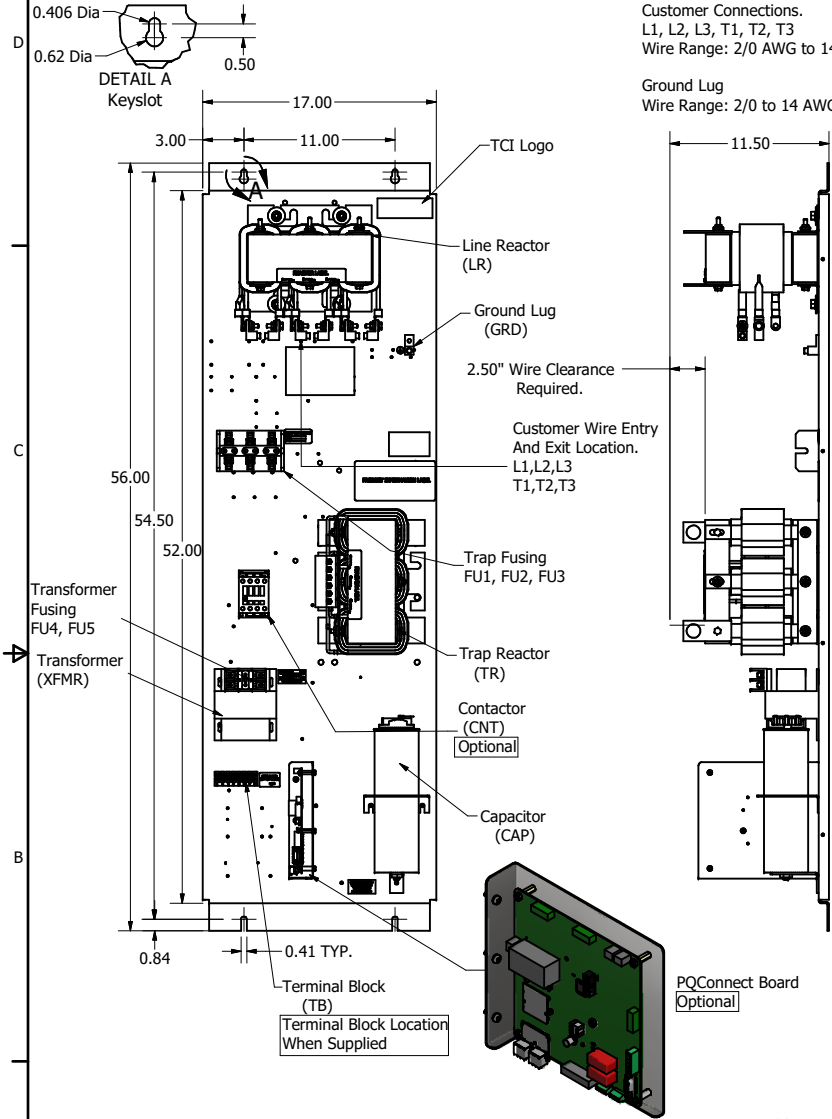
HGL Open Part Number	Schematic Drawing #	Approx Weight (LBS)
HGL0100CW0S0000	30807-1	200
HGL0100CW0C0000	30807	208
HGL0100CW0S1000	30807-PQ1	201
HGL0100CW0C1000	30807-PQ	209

Unit Specifications					
kVar	Harmonic	Volt	HZ.	Phase	HP
15	5TH	600	60	3	100

HGL Enclosed Type1 Part Number	Schematic Drawing #	Approx Weight (LBS)
HGL0100CW1S0000	30807-1	295
HGL0100CW1C0000	30807	300
HGL0100CW1S1000	30807-PQ1	296
HGL0100CW1C1000	30807-PQ	301

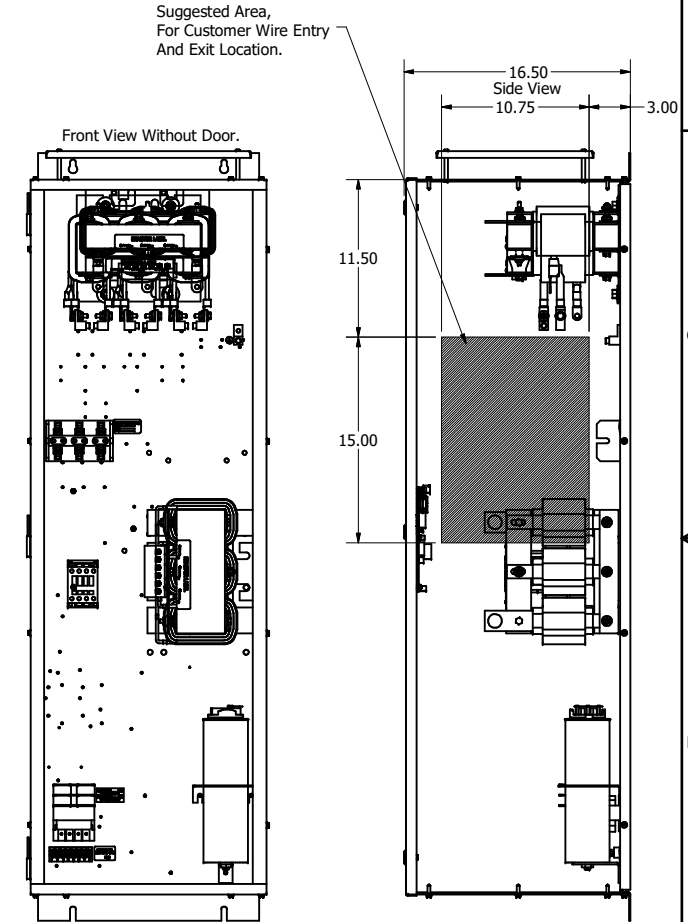
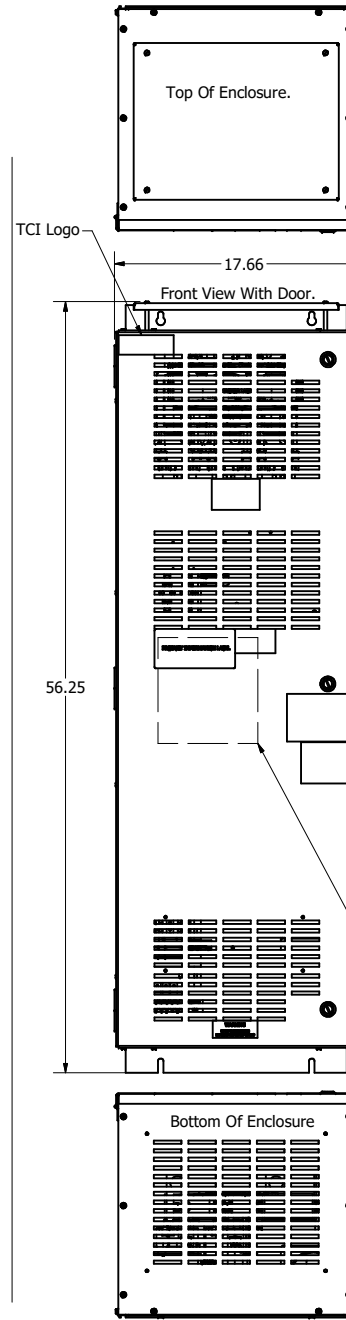
Note: For Torque Information See IOM Manual.
Customer Connections. L1, L2, L3, T1, T2, T3
Wire Range: 2/0 AWG to 14AWG.

Ground Lug
Wire Range: 2/0 to 14 AWG.



Note: Customer is responsible for proper cooling of filter components on open panels. Capacitors Maximum Ambient 50°C

HGP0100CW-----				
Components	0S0000/1S0000	0C0000/1C0000	0S1000/1S1000	0C1000/1C1000
Line Reactor (LR)	X	X	X	X
Trap Reactor (TR)	X	X	X	X
Capacitor (Cap)	X	X	X	X
Trap Fusing, FU1, FU2, FU3	X	X	X	X
Contactor (CNT)		X		X
Transformer (XFMR)		X	X	X
XFMR Fusing, FU4, FU5		X	X	X
PQConnect Board			X	X



Customer Is Responsible For Installation to Meet All National And Local Electrical Codes.

Material(s) Shall be RoHS Compliant

TCI, LLC CLAIMS PROPRIETARY RIGHTS IN THE MATERIAL HEREIN DISCLOSED. IT IS SUPPLIED WITHOUT PREJUDICE TO ANY PATENT RIGHTS OF TCI AND MAY NOT BE REPRODUCED OR USED TO MANUFACTURE ANYTHING SHOWN THEREIN WITHOUT WRITTEN PERMISSION FROM TCI.

REV	DATE	BY	DESCRIPTION
B	4/3/19	DSW	Add PQ Connect
NO			REVISION

TOLERANCES (EXCEPT AS NOTED)	
DECIMAL	.XX ±.25 .XXX ±.10
FRACTIONAL	± 1/16
ANGULAR	± 1°

TCI W132 N10611 Grant Drive
Germtown, WI 53022

HarmonicGuard Low Capacitance
HGL, 100HP, 600/3/60, Open and Type 1

107288DG

DATE: 10/3/17
SCALE: 1/6
SHEET 1 OF 1