

HGL Part Number	Schematic Drawing #	Approx Weight (LBS)
HGL0040AW3S0000	30586-S	220
HGL0040AW3C0000	30586-C	221
HGL0040AW3S*000	30586-PQS	222
HGL0040AW3C*000	30856-PQC	223

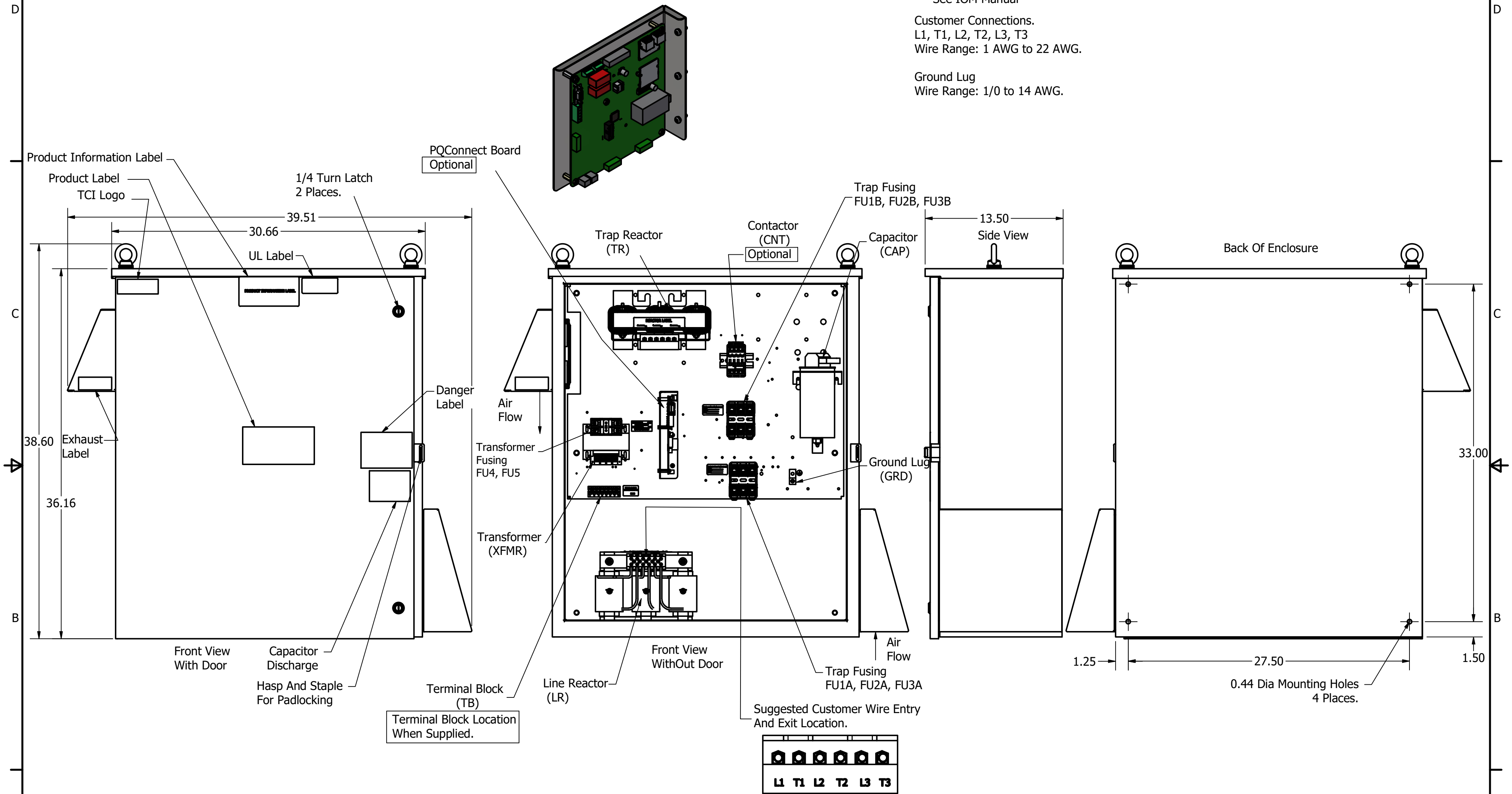
Unit Specifications						
HP	kVar	Harmonic	Volt	Maximum Amps (A)	HZ.	Phase
40	6	5TH	480	52	60	3

*= Communications Option

Note: For Torque Information
See IOM Manual

Customer Connections.
L1, T1, L2, T2, L3, T3
Wire Range: 1 AWG to 22 AWG.

Ground Lug
Wire Range: 1/0 to 14 AWG.




HGL0040AW3-----				
Components	S0000	C0000	S*000	C*000
Line Reactor (LR)	x	x	X	X
Trap Reactor (TR)	x	x	X	X
Capacitor (Cap)	x	x	X	X
Trap Fusing, FU1, FU2, FU3	x	x	X	X
Contactor (CNT)		x		X
Transformer (XFMR)	x	x	X	X
XFMR Fusing, FU4, FU5	x	x	X	X
PQConnect Board			X	X

NOTE: USE ONLY HUBS OR FITTINGS THAT COMPLY WITH UL514B FOR TYPE 3R ENCLOSURES

Customer Is Responsible For Installation to Meet All National And Local Electrical Codes.

Material(s) Shall be RoHS Compliant

THE INFORMATION AND DESIGNS CONTAINED IN THIS DRAWING ARE CONFIDENTIAL AND THE PROPRIETARY PROPERTY OF ALLIED MOTION TECHNOLOGIES INC. AND ITS SUBSIDIARIES. NEITHER THIS DESIGN NOR ANY INFORMATION CONTAINED IN THIS DRAWING MAY BE REPRODUCED OR DISCLOSED TO OTHERS WITHOUT THE EXPRESS WRITTEN CONSENT OF ALLIED MOTION TECHNOLOGIES INC. AND ITS SUBSIDIARIES.	E	6024, Add PQ Option	8/26/22	JTL	TOLERANCES (EXCEPT AS NOTED) DECIMAL .XX ± .25 .XXX ± .10	 <p>W132N10611 Grant Drive Gemantown, WI 53022 © 2021 TCI, LLC</p> <p>HarmonicGuard Low Capacitance HGP, 40HP, 480/3/60, Type 3R</p>					
	D	5653, GE to ABB CNT Change	11/8/2021	DSW	FRACTIONAL ± 1/16						
	C	5265, Enclosure Updated	8/6/2020	DSW	ANGULAR ± 1°						
	B	Add PQConnect	2/13/19	DSW							
NO	REVISION	DATE	BY		<table border="1"> <tr> <td>DRN BY: DSW</td> <td>DATE: 5/30/17</td> <td>107028DG</td> </tr> <tr> <td>SCALE: 1/8</td> <td>APRVD:</td> <td>SIZE: C</td> </tr> </table>	DRN BY: DSW	DATE: 5/30/17	107028DG	SCALE: 1/8	APRVD:	SIZE: C
DRN BY: DSW	DATE: 5/30/17	107028DG									
SCALE: 1/8	APRVD:	SIZE: C									