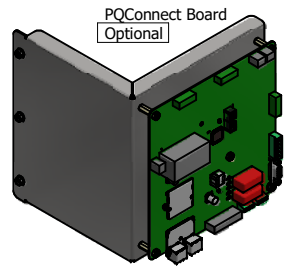
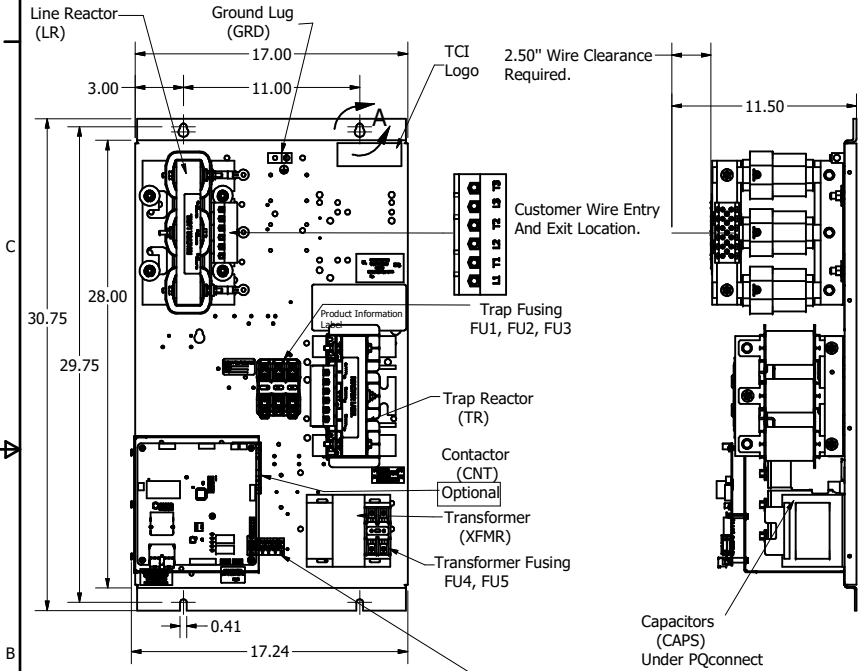
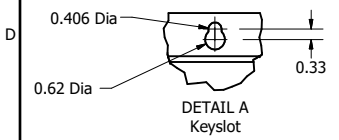


HGL Open Part Number	Schematic Drawing #	Approx Weight (LBS)
HGL0025CW0S0000	30807-25	98
HGL0025CW0C0000	30807-25C	103
HGL0025CW0S1000	30807-PQ6	100
HGL0025CW0C1000	30807-PQ7	104

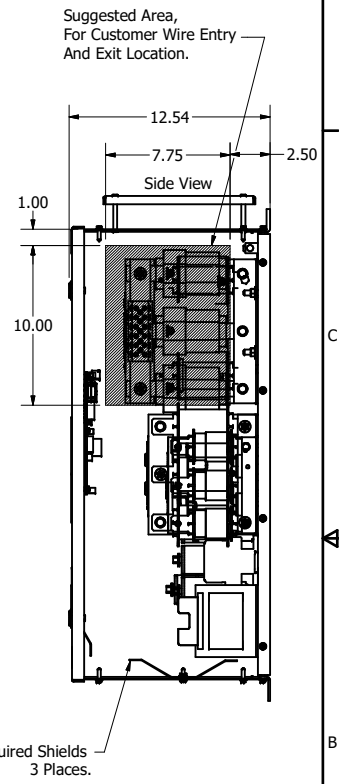
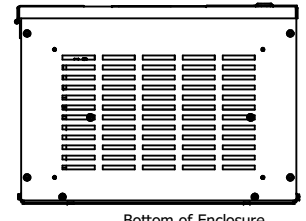
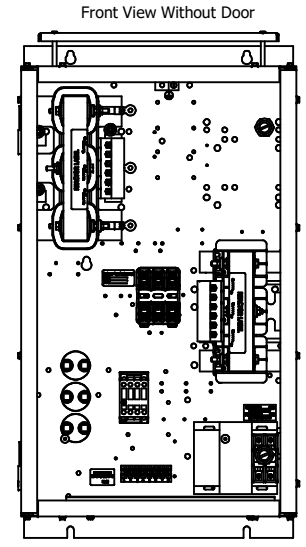
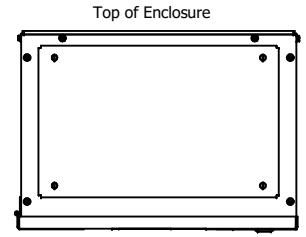
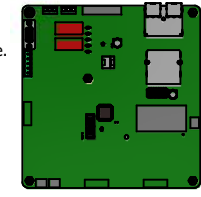
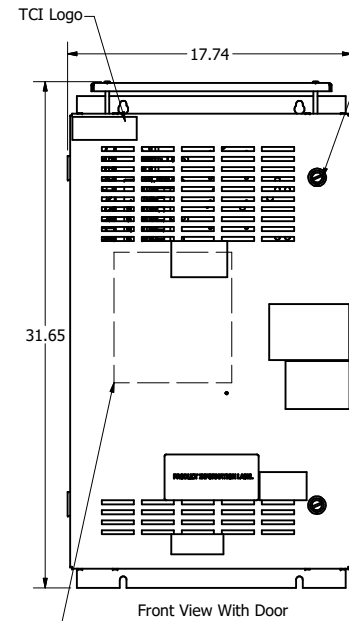
Unit Specifications					
kVar	Harmonic	Volt	HZ.	Phase	HP
4.1	5TH	600	60	3	25

HGL Enclosed Type1 Part Number	Schematic Drawing #	Approx Weight (LBS)
HGL0025CW1S0000	30807-25	163
HGL0025CW1C0000	30807-25C	167
HGL0025CW1S1000	30807-PQ6	164
HGL0025CW1C1000	30807-PQ7	168

Note: For Torque Information See IOM Manual  
 Customer Connections.  
 L1, T1, L2, T2, L3, T3  
 Wire Range: 1 AWG to 22 AWG.  
 Ground Lug  
 Wire Range: 1/0 to 14 AWG.



Terminal Block (TB)  
 Location Of Terminal Block, When Supplied



Note: Customer is responsible for proper cooling of filter components on open panels. Capacitors Maximum Ambient 50°C.

Components	HGL0025CW-----			
	0S0000/1S0000	0C0000/1C0000	0S1000/1S1000	0C1000/1C1000
Line Reactor (LR)	X	X	X	X
Trap Reactor (TR)	X	X	X	X
Capacitor (Cap)	X	X	X	X
Trap Fusing, FU1, FU2, FU3	X	X	X	X
Contactor (CNT)		X		X
Transformer (XFMR)		X	X	X
XFMR Fusing, FU4, FU5		X	X	X
PQConnect Board			X	X

TCI, LLC CLAIMS PROPRIETARY RIGHTS IN THE MATERIAL HEREIN DISCLOSED. IT IS SUPPLIED WITHOUT PREJUDICE TO ANY PATENT RIGHTS OF TCI AND MAY NOT BE REPRODUCED OR USED TO MANUFACTURE ANYTHING SHOWN THEREIN WITHOUT WRITTEN PERMISSION FROM TCI.

REV	DESCRIPTION	DATE	BY
B	PQConnect Board Added.	3/28/19	DSW
NO	REVISION	DATE	BY

TOLERANCES (EXCEPT AS NOTED)		TCI W132 N10611 Grant Drive Germantown, WI 53022	
DECIMAL	.XX ± .25 .XXX ± .10	HarmonicGuard Low Capacitance	
FRACTIONAL	± 1/16	HGL, 25HP, 600/3/60, Open and Type 1.	
ANGULAR	± 1°	DRN BY: DSW	DATE: 10/5/17
SCALE: 1/8	DRWN BY: DSW	DATE: 10/5/17	107328DG
		SCALE: 1/8	DATE: 10/5/17

Customer Is Responsible For Installation to Meet All National And Local Electrical Codes.

Material(s) Shall be RoHS Compliant