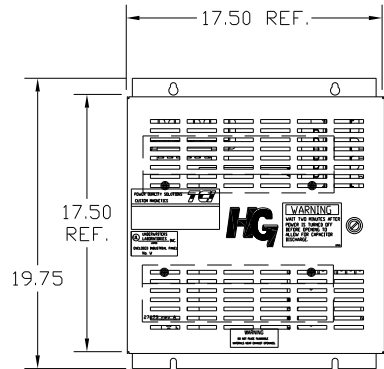
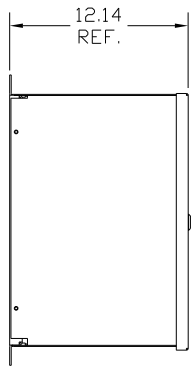


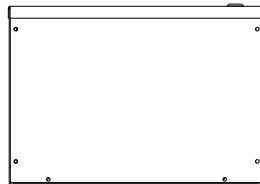
UNIT SPECIFICATIONS:					
KW	HARMONIC	VOLT	HZ	PHASE	FLA
9.3	5TH	400	50	3	20
ENCLOSURE		NEMA 1			
APPROX.WT. LBS.		77			

SYMBOL	TCI PART NUMBER
LR	KDRE32T
TR	KTR3L55HG
CAP, 1, 2, (3 KVAR)	KCAP3A6A
XFMR.	24385
Fu1, 2, 3	22923
Fu4,6	13180
Fu5	13364
CNT	12434

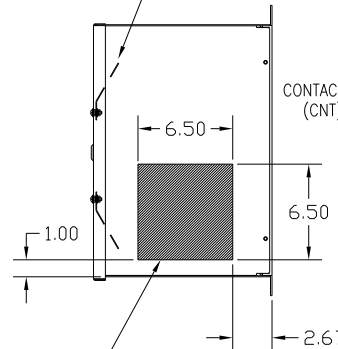
SEE DWG# 27703 FOR SCHEMATIC



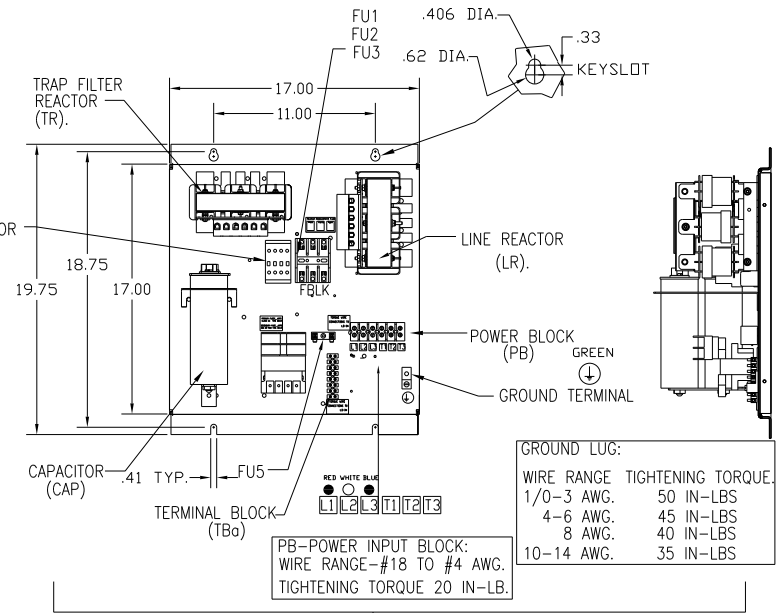
L1 L2 L3
RED WHITE BLUE



UL DOOR
MTD. SHIELD
2 PLACES.



HATCHED AREAS ARE SUGGESTED
CUSTOMER WIRE AND EXIT LOCATIONS
(BOTTOM ENTRANCE ALTERNATE-CONSULT TCI)



GROUND LUG:	
WIRE RANGE	TIGHTENING TORQUE.
1/0-3 AWG.	50 IN-LBS
4-6 AWG.	45 IN-LBS
8 AWG.	40 IN-LBS
10-14 AWG.	35 IN-LBS

CUSTOMER IS RESPONSIBLE FOR INSTALLATION
TO MEET ALL NATIONAL AND LOCAL ELECTRICAL CODES.

				TOLERANCES (EXCEPT AS NOTED): DECIMAL	7878 N. 86th STREET MILWAUKEE, WI 53224 HG9LW01STC, 9.3KW 400/3/50, ENCLOSED.
				XX ± .03 XXX ± .01	
				FRACTIONAL ± 1/32	
				ANGULAR ± 1/2°	
A	AS BUILT	5/13/11	DSW	DRN. BY DSW	DATE 5/13/11
NO	REVISION	DATE	BY	SCALE TO FIT	APRVD C
					DWG. NO. 104667DG
					SHT. 1 OF 1