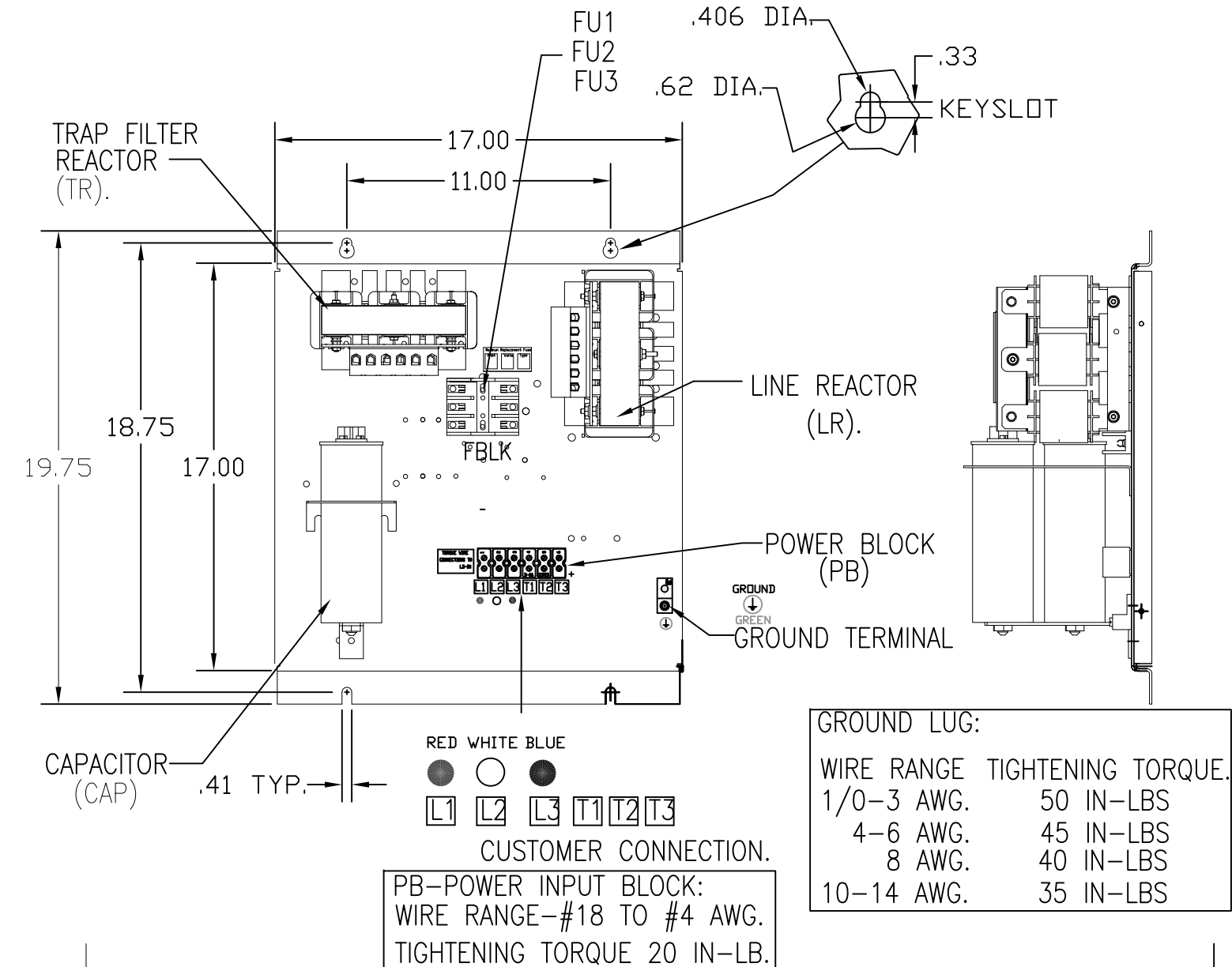
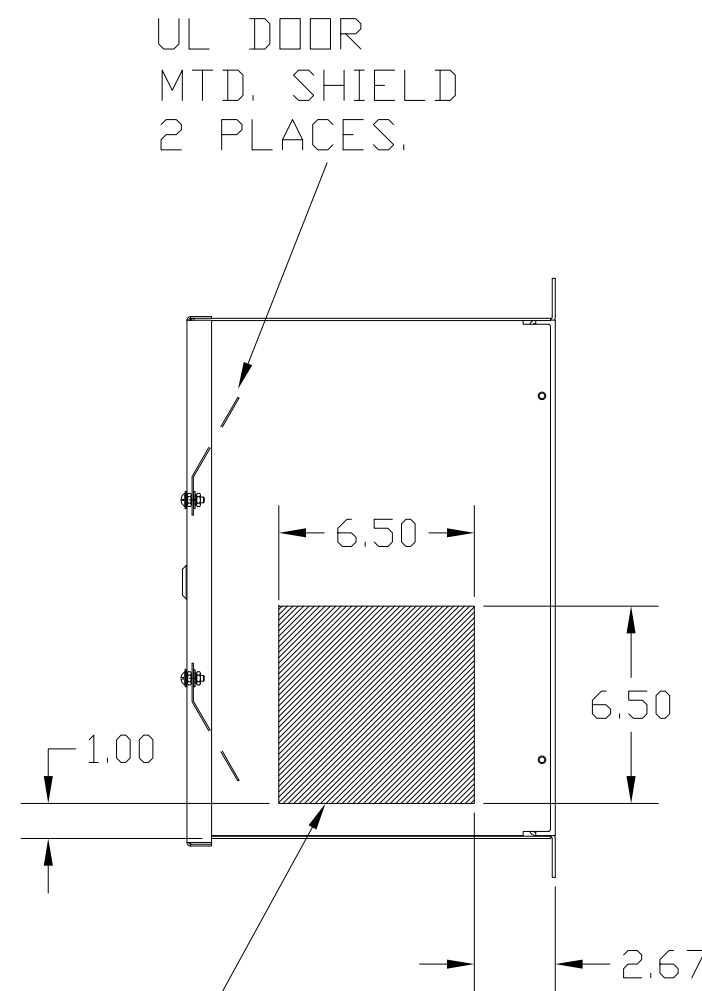
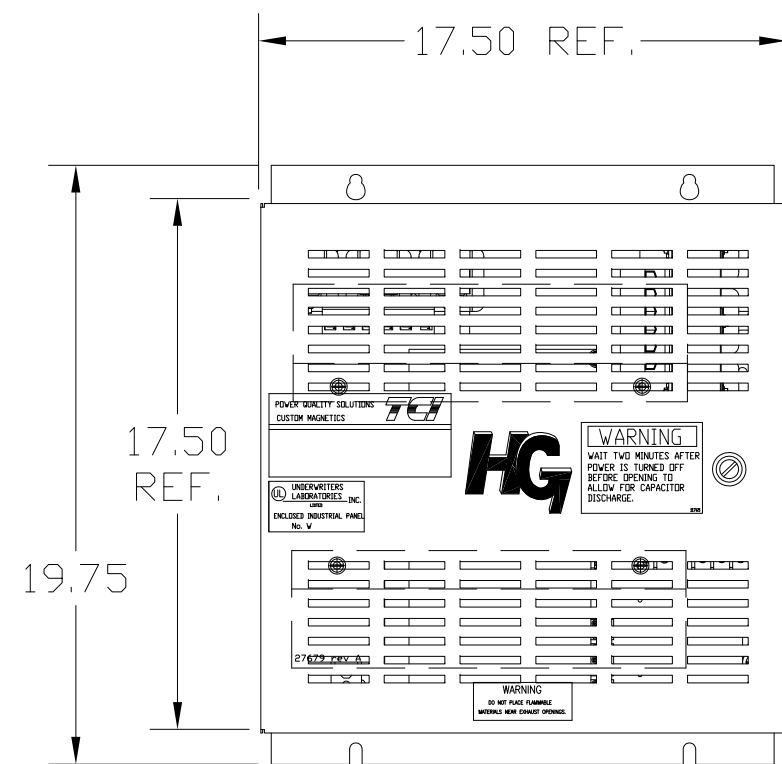
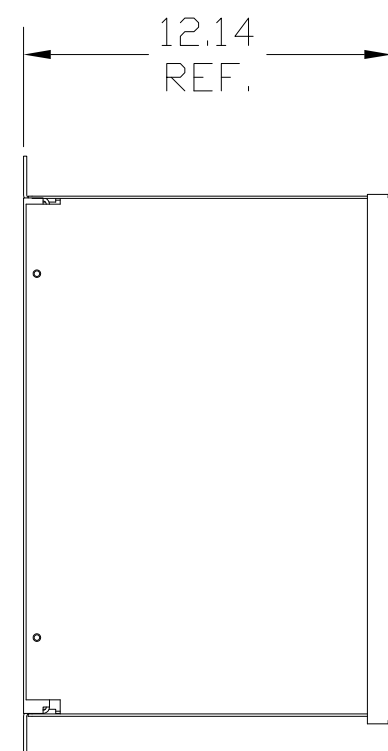
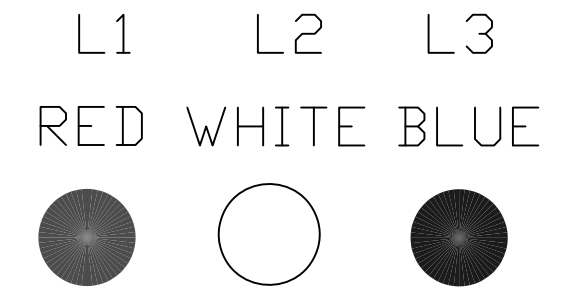


UNIT SPECIFICATIONS:					
KW	HARMONIC	VOLT	HZ	PHASE	FLA
9.3	5TH	400	50	3	20
ENCLOSURE		NEMA 1			
APPROX.WT. LBS.		72			

SYMBOL	TCI PART NUMBER
LR	KDRE32T
TR	KTR3L55HG
CAP, 2.. (3 KVAR)	KCAP3A6A
Fu1, 2, 3	22923

SEE DWG# 27709 FOR SCHEMATIC



HATCHED AREAS ARE SUGGESTED  
CUSTOMER WIRE AND EXIT LOCATIONS  
(BOTTOM ENTRANCE ALTERNATE-CONSULT TCI)

ENCLOSURE NOT SHOWN

CUSTOMER IS RESPONSIBLE FOR INSTALLATION  
TO MEET ALL NATIONAL AND LOCAL ELECTRICAL CODES.

TCI, LLC CLAIMS PROPRIETARY RIGHTS IN THE MATERIAL HEREIN DISCLOSED. IT IS SUPPLIED WITHOUT PREJUDICE TO ANY PATENT RIGHTS OF TCI AND MAY NOT BE REPRODUCED OR USED TO MANUFACTURE ANYTHING SHOWN THEREIN WITHOUT WRITTEN PERMISSION FROM TCI.				TOLERANCES (EXCEPT AS NOTED): DECIMAL	W132 N10611 Grant Drive Germantown, WI 53022  <b>HG9LW01ST, 9.3 kW</b> <b>400/3/50, ENCLOSED</b>
				.XX ± .03	
				.XXX ± .01	
				FRACTIONAL ± 1/32	
	AS BUILT	5/12/11	DSW	ANGULAR ± 1/2°	DRN. BY DSW DATE 5/12/11 DWG. NO. 104655DG
	REVISION	DATE	BY	SCALE TO FIT	SIZE C SHT.1 OF 1