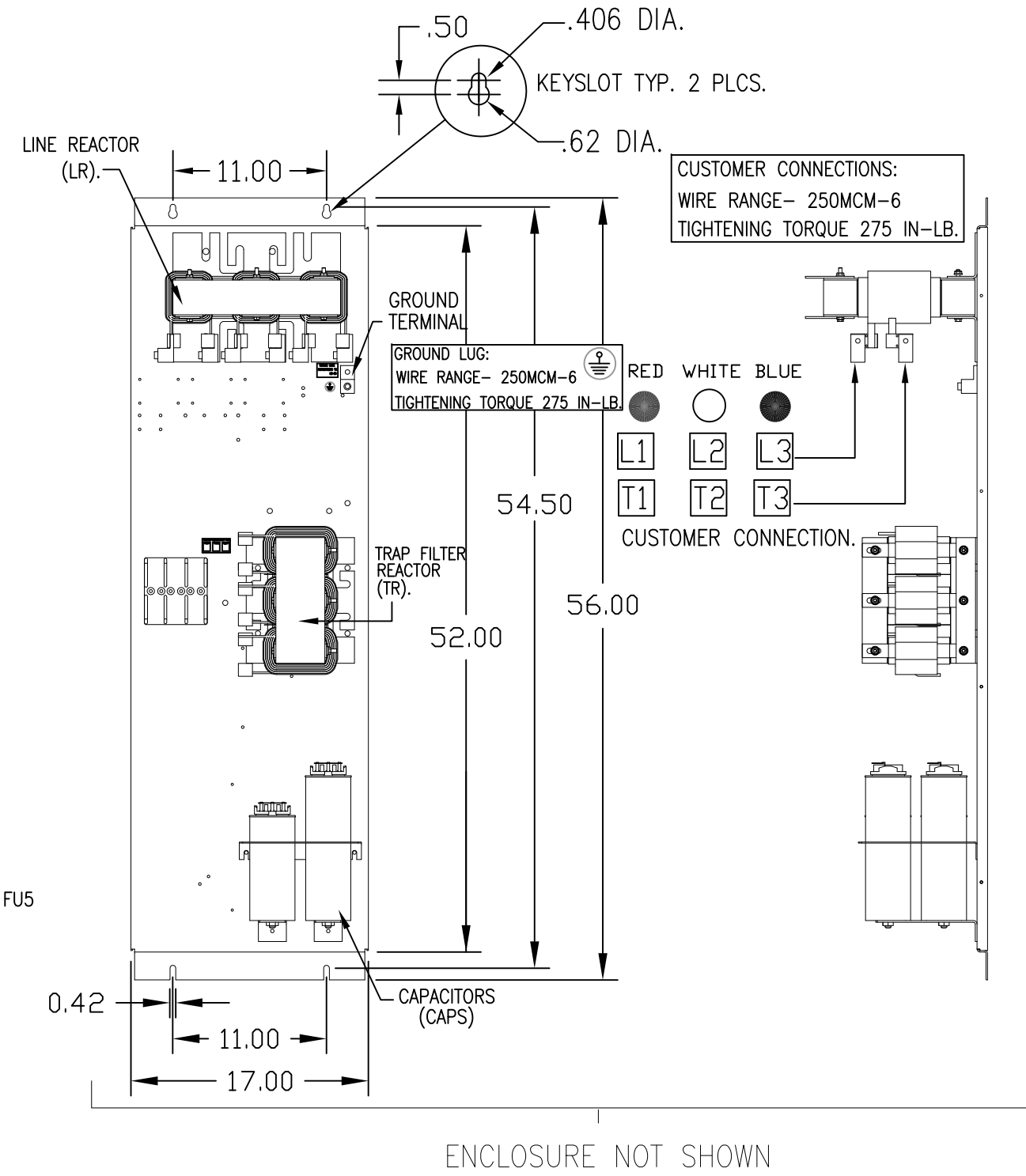
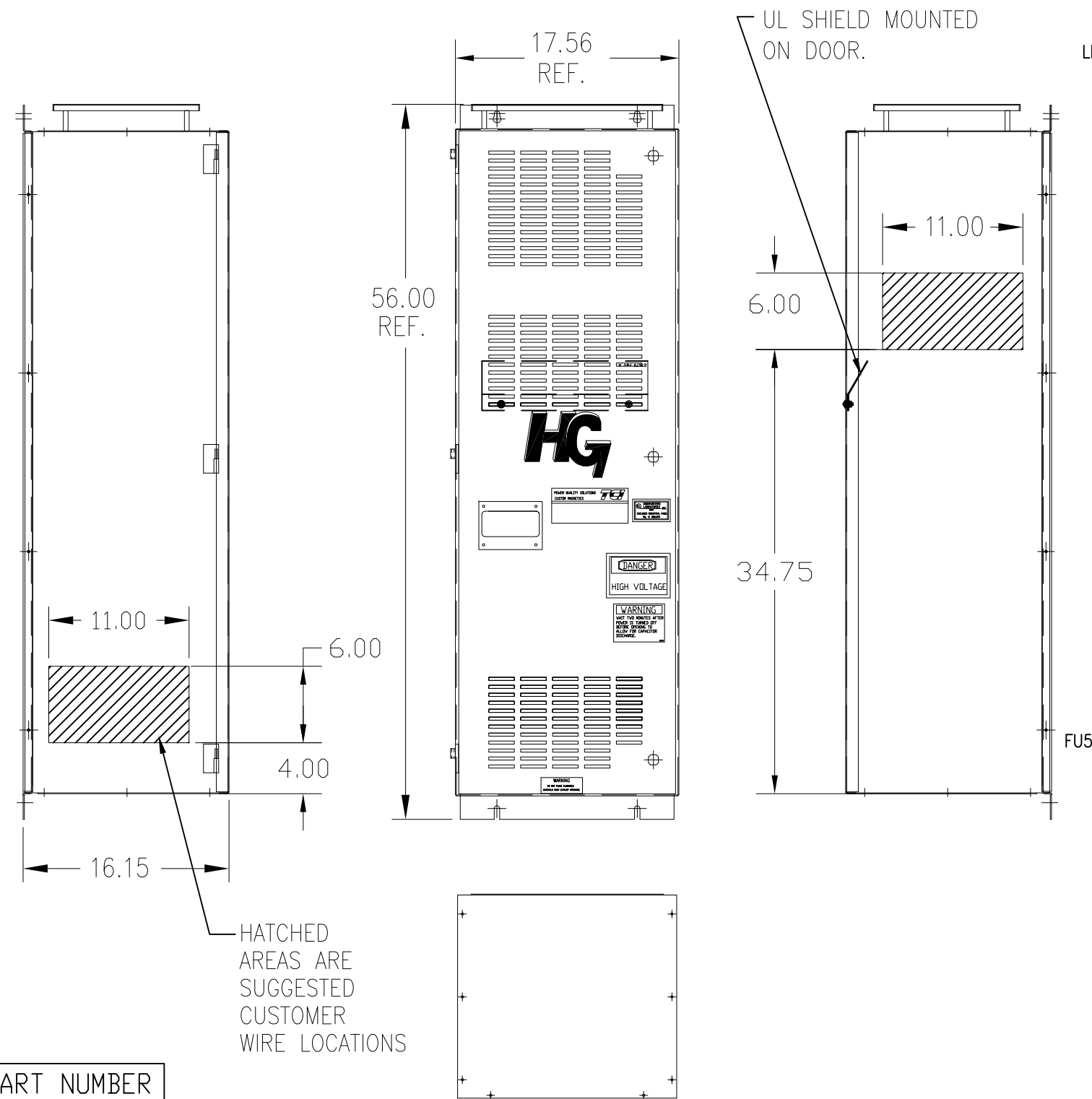


UNIT SPECIFICATIONS:					
KW	HARMONIC	VOLT	HZ	PHASE	FLA
90	5TH	400	50	3	170
ENCLOSURE		NEMA 1			
APPROX.WT. LBS.		331			



SYMBOL	TCI PART NUMBER
LR	KDRL32T
TR	KTR36L55HG
CAP1, 2 (20 KVAR)	KCAP20A6B
CAP3. (15 KVAR)	KCAP15A6B
CAP4. (10 KVAR)	KCAP10A6B
Fu1, 2, 3	24199

SEE DRAWING# 27709 FOR SCHEMATIC

CUSTOMER IS RESPONSIBLE FOR INSTALLATION TO MEET ALL NATIONAL AND LOCAL ELECTRICAL CODES.

TCI, LLC CLAIMS PROPRIETARY RIGHTS IN THE MATERIAL HEREIN DISCLOSED. IT IS SUPPLIED WITHOUT PREJUDICE TO ANY PATENT RIGHTS OF TCI AND MAY NOT BE REPRODUCED OR USED TO MANUFACTURE ANYTHING SHOWN THEREIN WITHOUT WRITTEN PERMISSION FROM TCI.				TOLERANCES (EXCEPT AS NOTED):	W132 N10611 Grant Drive Germantown, WI 53022 HG90LW01ST, 90KW 400/3/500, ENCLOSED
				DECIMAL	
				.XX ±.03 .XXX±.01	
				FRACTIONAL ± 1/32	
	AS BUILT	11/04/10	DSW	ANGULAR ± 1/2°	DRN. BY DSW DATE 11/17/2010 DWG. NO. 104514DG
	NO REVISION	DATE	BY	SCALE TO FIT	SIZE C SHT.1 OF 1