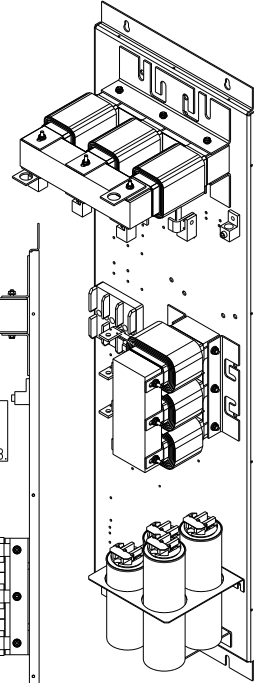
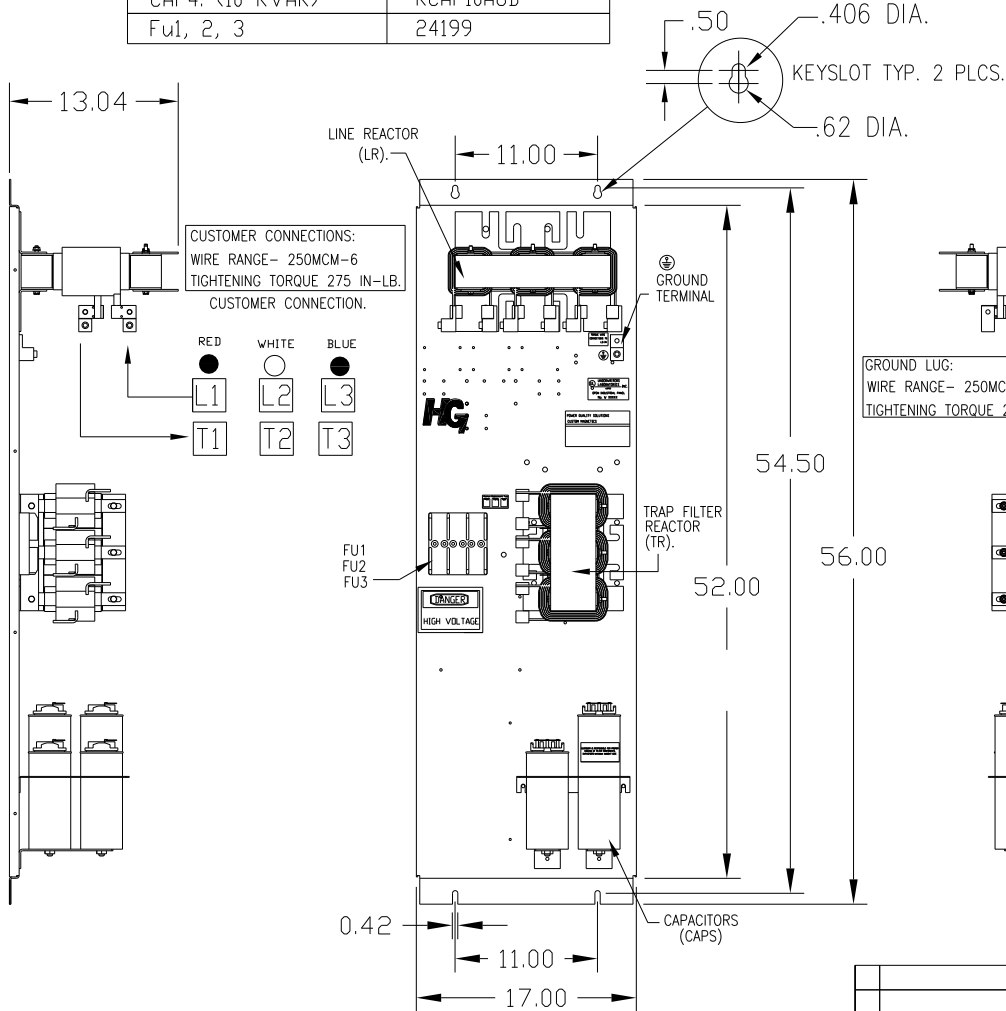
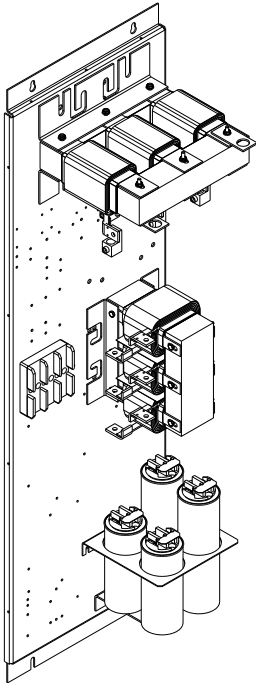


UNIT SPECIFICATIONS:					
KW	HARMONIC	VOLT	HZ	PHASE	FLA
90	5TH	400	50	3	170
ENCLOSURE		WHITE OPEN PANEL			
APPROX.WT. LBS.		243			

SYMBOL	TCI PART NUMBER
LR	KDRL32T
TR	KTR36L55HG
CAP1, 2 (20 KVAR)	KCAP20A6B
CAP3. (15 KVAR)	KCAP15A6B
CAP4. (10 KVAR)	KCAP10A6B
Fu1, 2, 3	24199



CUSTOMER IS RESPONSIBLE FOR PROPER COOLING OF FILTER COMPONENTS. CAPACITORS MAXIMUM AMBIENT 50°C.

CUSTOMER IS RESPONSIBLE FOR INSTALLATION TO MEET ALL NATIONAL AND LOCAL ELECTRICAL CODES.

SEE DRAWING# 27709 FOR SCHEMATIC

		TOLERANCES (EXCEPT AS NOTED)		TCI 7878 N. 86th STREET MILWAUKEE, WI 53224	
		DECIMAL		HG90LW00ST, 90KW 400/3/50, OPEN.	
		XX ± .03		DRN. BY DSW DATE 11/16/2010 DWG. NO. 104503DG	
		XXX ± .01		SCALE TO FIT	
		FRACTIONAL ± 1/32		APRVD	
A AS BUILT		11/04/10	DSW	C	
NO REVISION		DATE	BY	SHT. 1 OF 1	
		ANGULAR ± 1/2°			