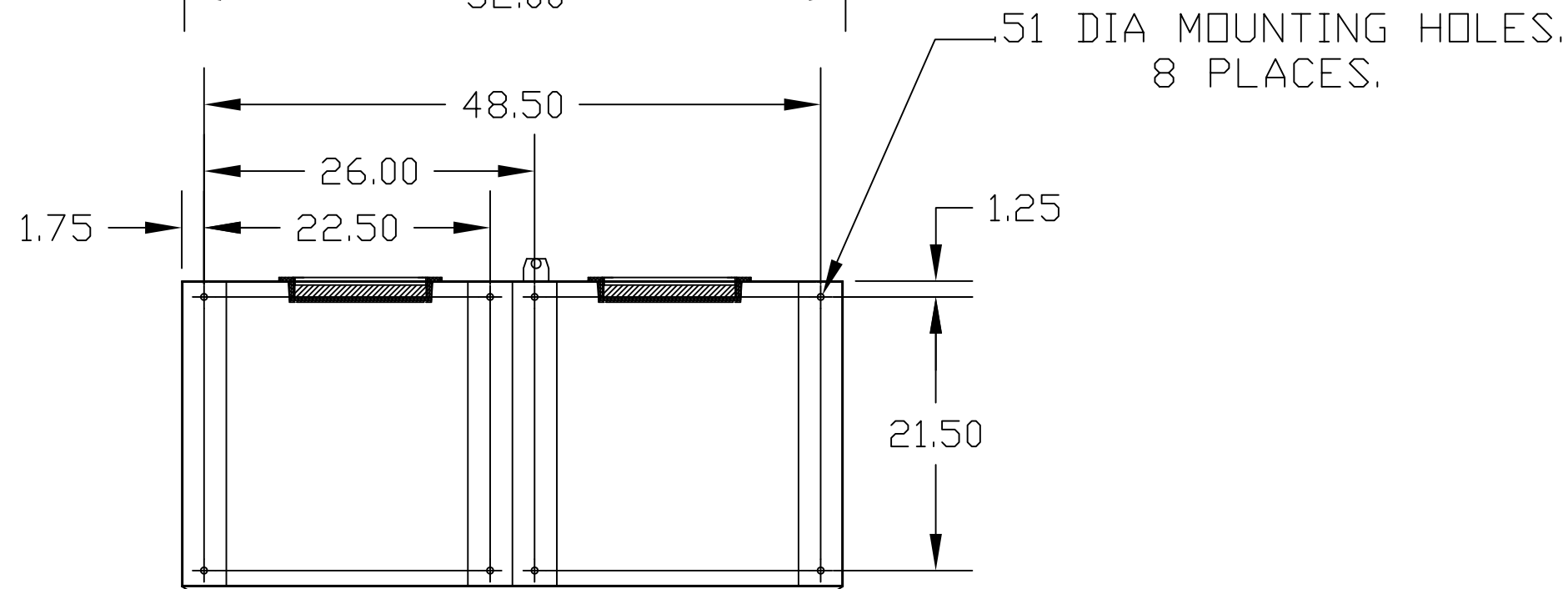
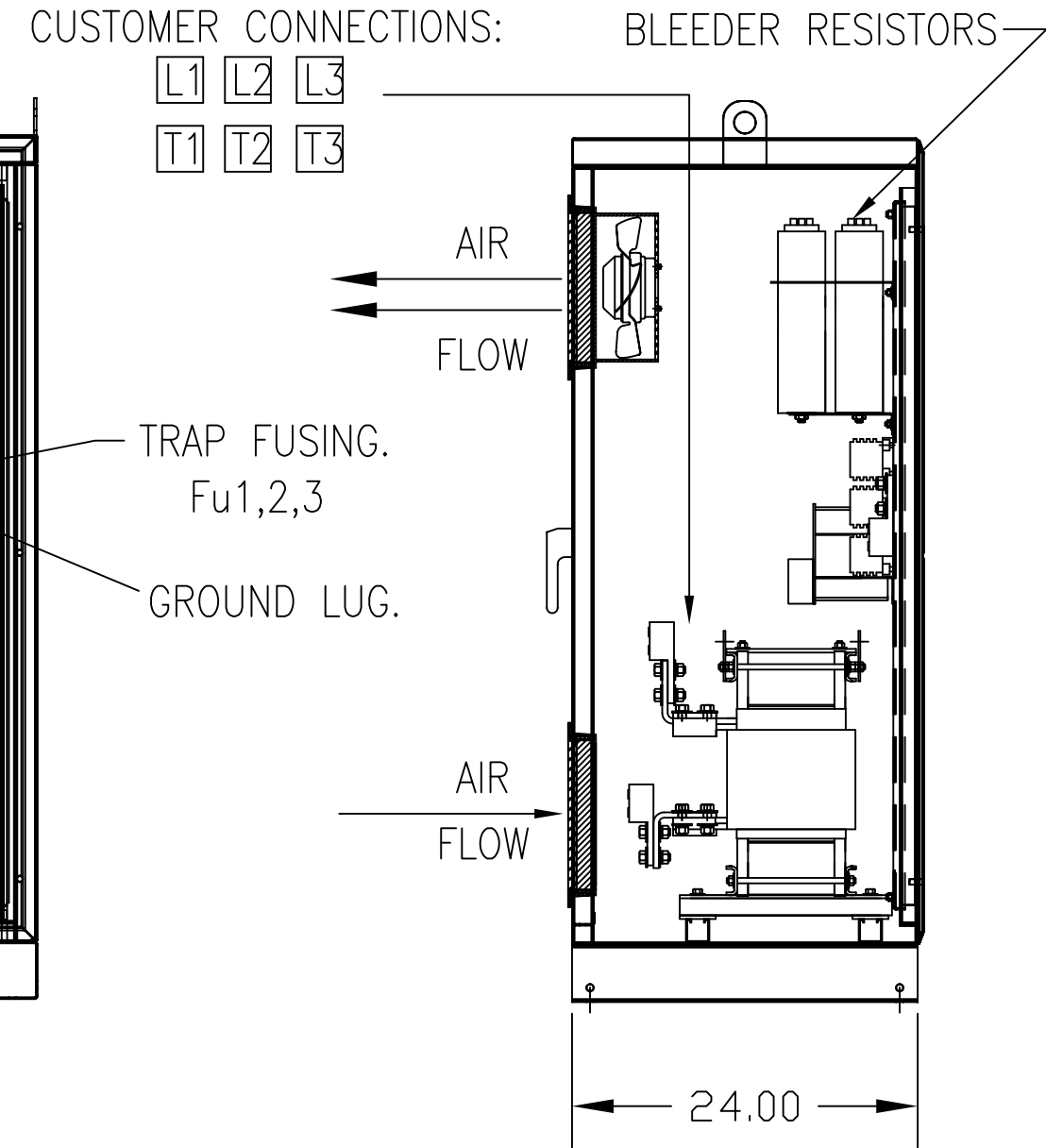
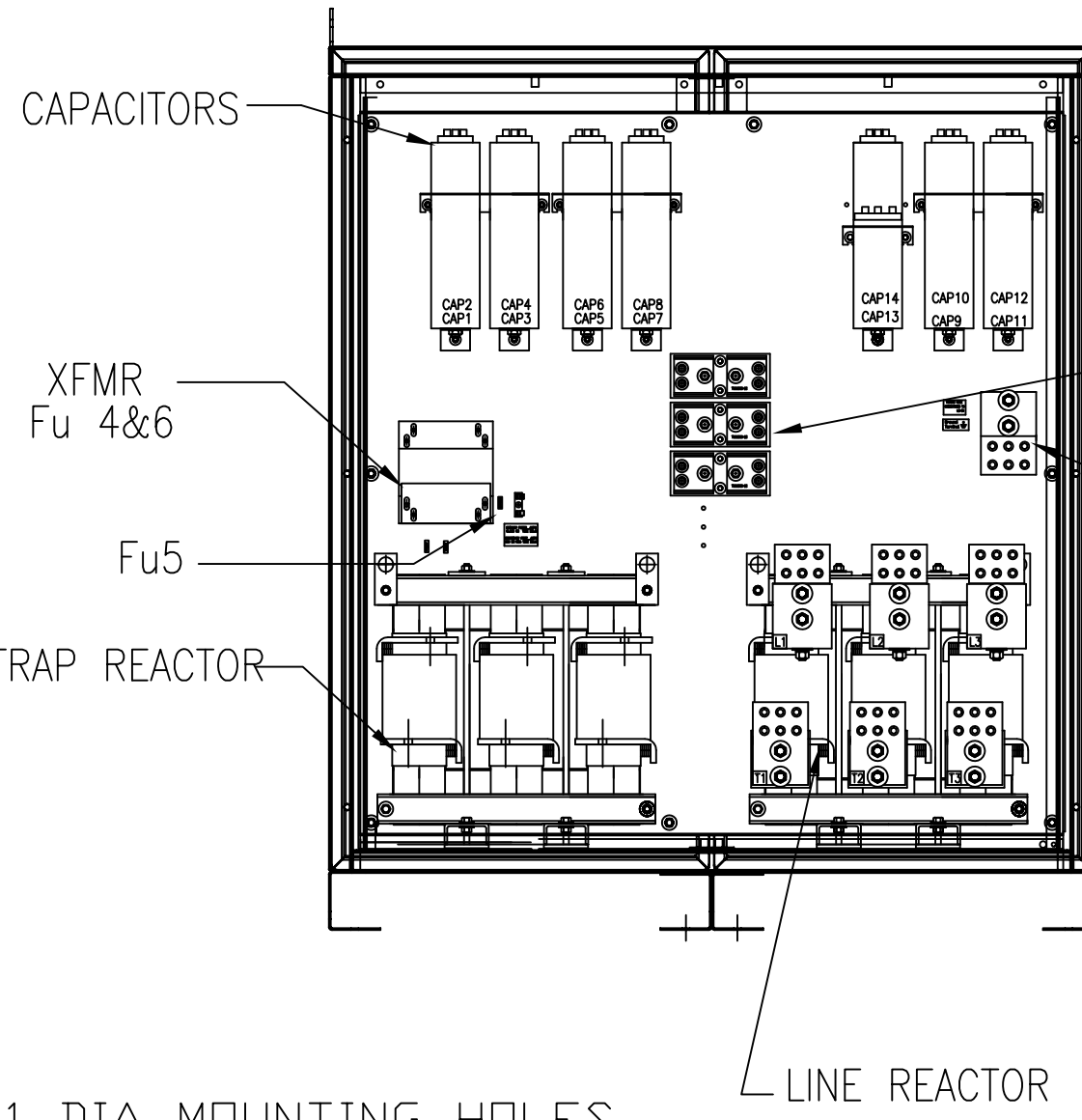
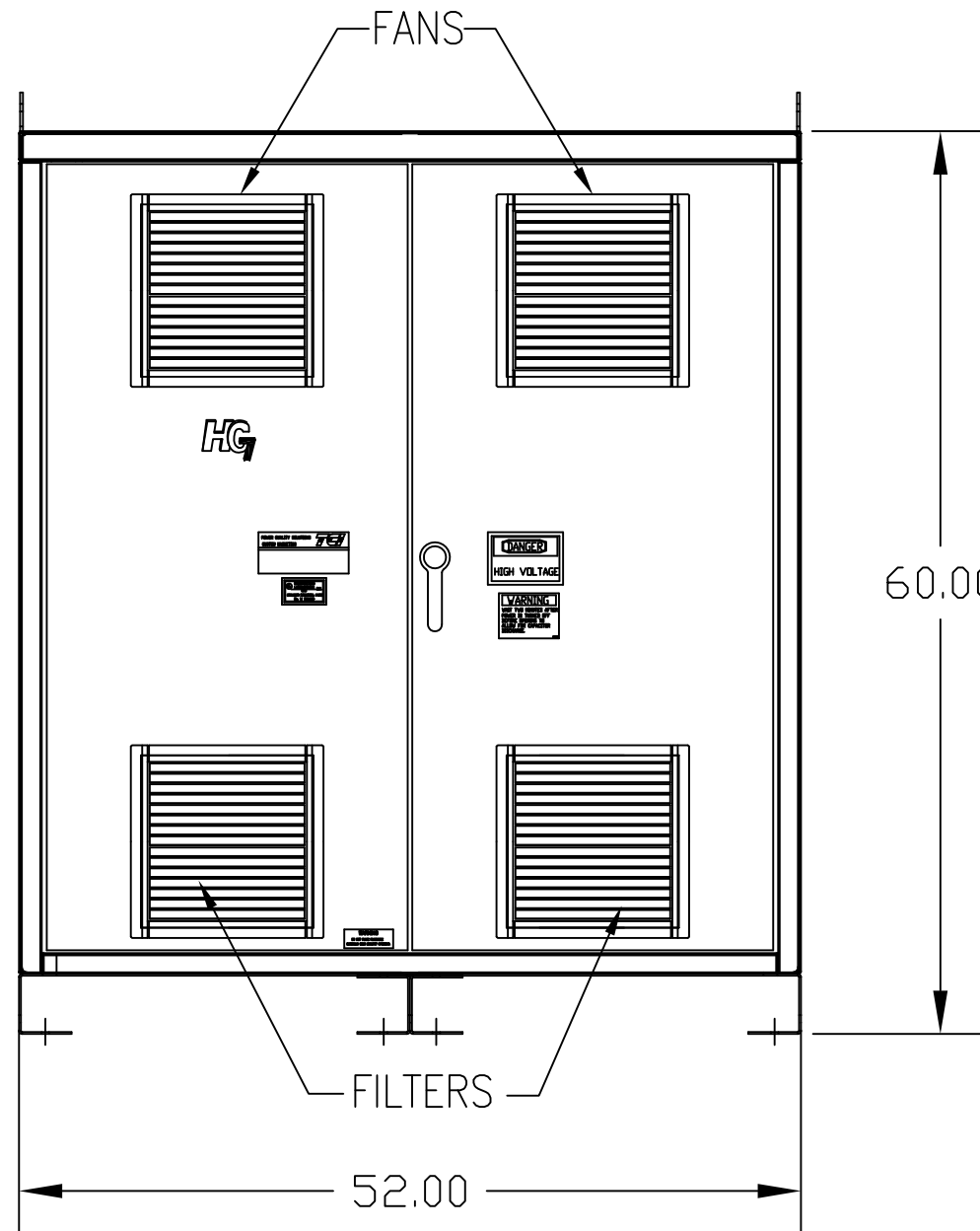


UNIT SPECIFICATIONS:					
KVAR	HARMONIC	VOLT	HZ	PHASE	HP
270	5TH	600	60	3	900
ENCLOSURE		NEMA 1			
APPROX.WT. LBS.		1750			

SYMBOL	TCI PART NUMBER
LR	KDRY45T
TR	KTR270C65HG
CAP1- 13 (20 KVAR)	KCAP20C6B
CAP14 (10 KVAR)	KCAP10C6B
XFMR.	25292
Fu1a;2a;3a	13329
Fu4,6	24390
Fu5	23977



FOR SCHEMATIC SEE 25116

CUSTOMER IS RESPONSIBLE FOR INSTALLATION TO MEET ALL NATIONAL AND LOCAL ELECTRICAL CODES

CUSTOMER CONNECTIONS:  
WIRE RANGE-THREE 600MCM-2  
TIGHTENING TORQUE 375 IN-LB.

GROUND LUG:  
WIRE RANGE-THREE 600MCM-2  
TIGHTENING TORQUE 375 IN-LB.

TCI, LLC CLAIMS PROPRIETARY RIGHTS IN THE MATERIAL HEREIN DISCLOSED. IT IS SUPPLIED WITHOUT PREJUDICE TO ANY PATENT RIGHTS OF TCI AND MAY NOT BE REPRODUCED OR USED TO MANUFACTURE ANYTHING SHOWN THEREIN WITHOUT WRITTEN PERMISSION FROM TCI.				TOLERANCES (EXCEPT AS NOTED): DECIMAL	W132 N10611 Grant Drive Germantown, WI 53022	
	B	2786 REMOVE COLOR	11/14/11	DSW		.XX ± .03
	A	2516, CAP WAS 18612				FRACTIONAL ± 1/32
	NO	REVISION	DATE	BY	ANGULAR ± 1/2°	HG900CW01ST, HG7 STANDARD 900HP, 600/3/60, TYPE 1 DRN. BY DSW DATE 6/22/05 DWG. NO. 102707DG SCALE TO FIT SIZE C SHT.1 OF 1