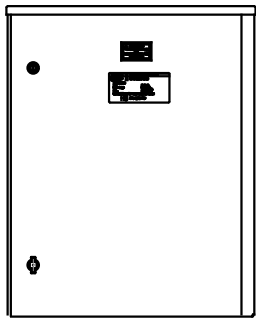
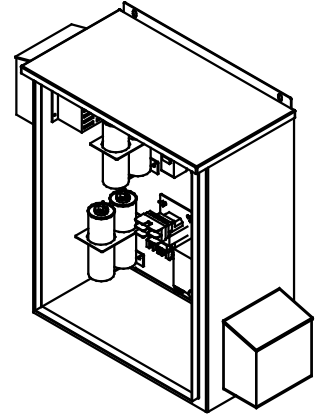
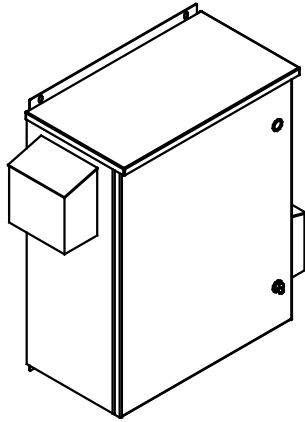


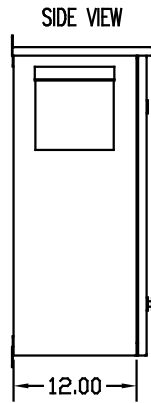
SEE DWG# 26897 FOR SCHEMATIC

CUSTOMER IS RESPONSIBLE FOR INSTALLATION TO MEET ALL NATIONAL AND LOCAL ELECTRICAL CODES.

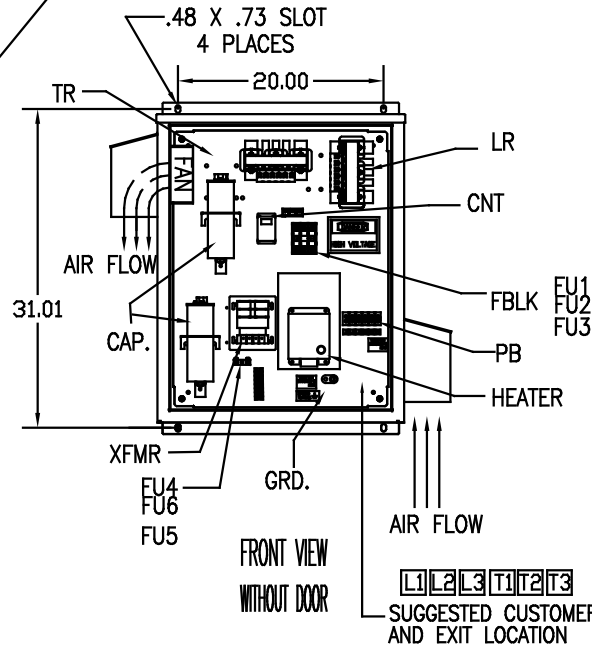
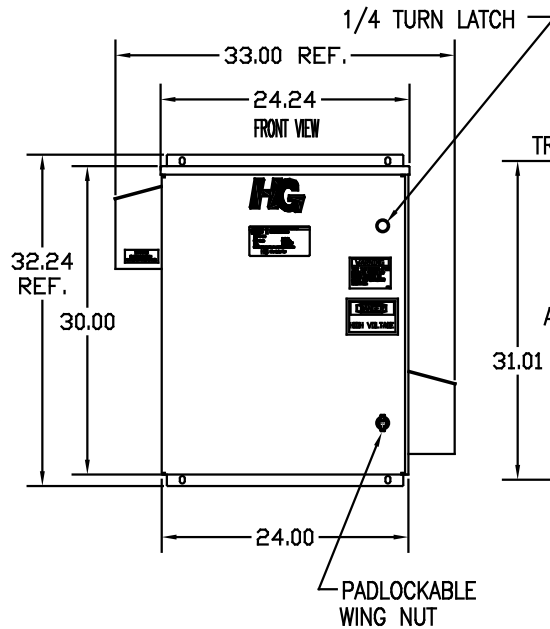
NOTE: USE ONLY HUBS OR FITTINGS THAT COMPLY WITH UL514B FOR TYPE 3R ENCLOSURES.



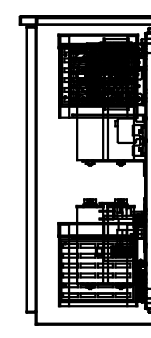
INSIDE VIEW OF DOOR



SIDE VIEW



FRONT VIEW WITHOUT DOOR



| UNIT SPECIFICATIONS: |                   |     |       |    |     |
|----------------------|-------------------|-----|-------|----|-----|
| KVAR HARMONIC        | VOLT              | HZ  | PHASE | HP |     |
| 3                    | 5TH               | 240 | 60    | 3  | 7.5 |
| ENCLOSURE            | UL TYPE 3R        |     |       |    |     |
| COLOR                | WHITE             |     |       |    |     |
| FEATURES             | CONTACTOR, HEATER |     |       |    |     |
| APPROX.WT. LBS.      | 132               |     |       |    |     |

| SYMBOL                  | TCI PART NUMBER |
|-------------------------|-----------------|
| LR                      | KDRC21T         |
| TR                      | KTR3B65HG       |
| CAP. (3 KVAR), 4 PLACES | KCAP3A6A        |
| XFMR.                   | 23896           |
| Fu1, 2, 3               | 15752           |
| Fu4,6                   | 14106           |
| Fu5                     | 17567           |
| CNT                     | 26739           |
| HEATER (200 WATT)       | 11638           |

PB-POWER INPUT BLOCK:  
WIRE RANGE-#18 TO #4 AWG.  
TIGHTENING TORQUE 20 IN-LB.

GROUND LUG:  
WIRE RANGE-1/0 TO #14 AWG.  
TIGHTENING TORQUE 200 IN-LB.

| NO | REVISION | DATE | BY | TOLERANCES<br>(EXCEPT AS NOTED)                                  | SCALE  | DATE     | APPROV | DWG. NO. | SHT. 1 OF 1 |
|----|----------|------|----|------------------------------------------------------------------|--------|----------|--------|----------|-------------|
|    |          |      |    | XX ±.12<br>.XXX±.06<br>FRACTIONAL<br>± 1/32<br>ANGULAR<br>± 1/2° | TO FIT | 12/16/08 |        | 103764DG |             |

TCI 7878 N. 86th STREET MILWAUKEE, WI 53224

HG8BW03STCH, 7.5HP  
240/3/60 UL TYPE 3R

DWG. BY DSW DATE 12/16/08 DWG. NO. 103764DG