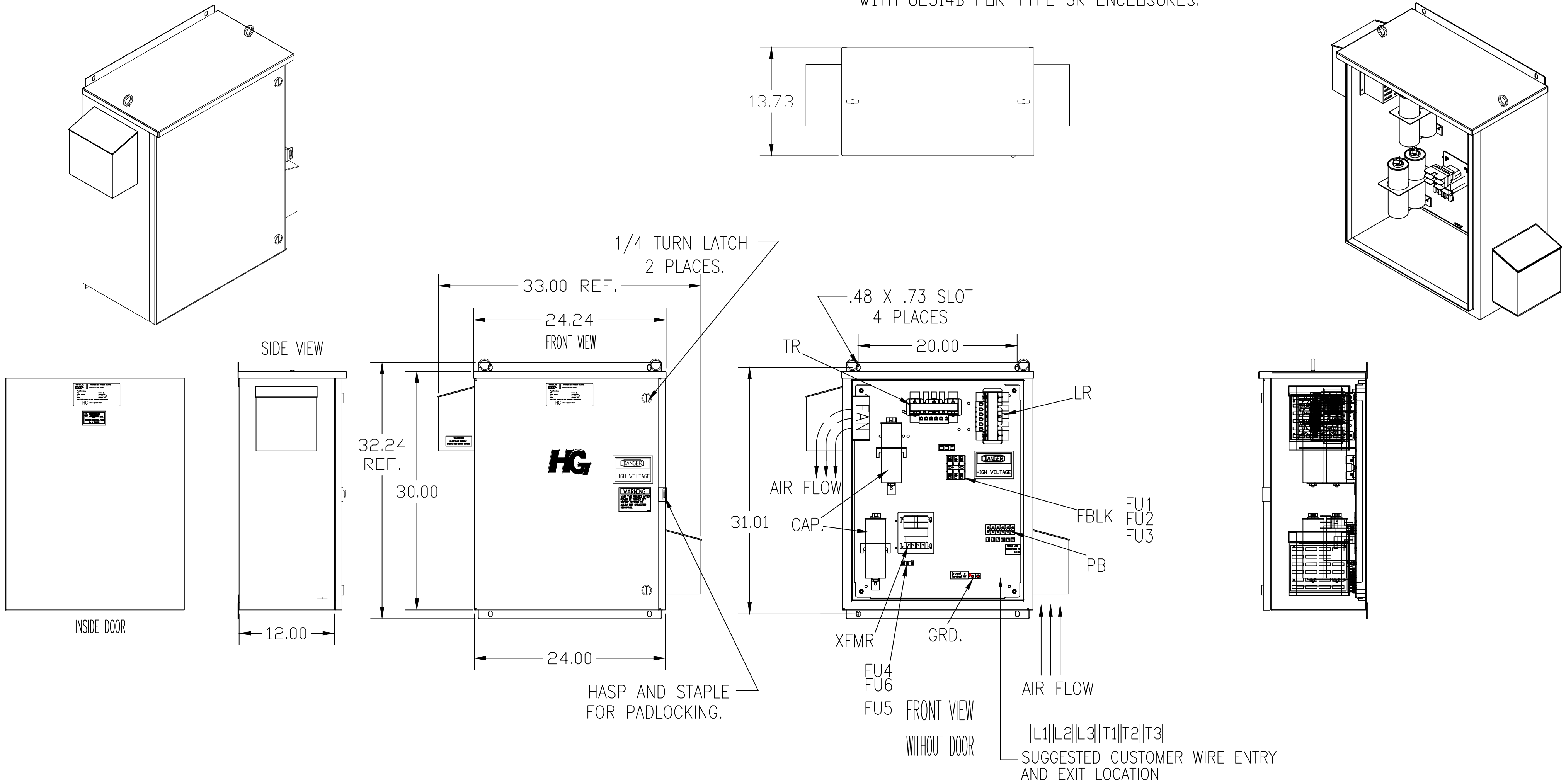


SEE DWG# 26901 FOR SCHEMATIC

CUSTOMER IS RESPONSIBLE FOR INSTALLATION TO MEET ALL NATIONAL AND LOCAL ELECTRICAL CODES.

NOTE: USE ONLY HUBS OR FITTINGS THAT COMPLY WITH UL514B FOR TYPE 3R ENCLOSURES.



GROUND LUG:  
 WIRE RANGE-1/0 TO #14 AWG.  
 1/0 AWG thru 2 AWG 50 IN-LBS. MAX.  
 4 AWG thru 6 AWG 45 IN-LBS. MAX.  
 8 AWG 40 IN-LBS. MAX.  
 10 AWG thru 14 AWG 35 IN-LBS. MAX.

PB-POWER INPUT BLOCK:  
 WIRE RANGE-#18 TO #4 AWG.  
 TIGHTENING TORQUE 20 IN-LB.

UNIT SPECIFICATIONS:						
KVAR	HARMONIC	VOLT	HZ	PHASE	HP	FLA
3	5TH	240	60	3	7.5	22
ENCLOSURE		UL TYPE 3R				
COLOR		WHITE				
APPROX.WT. LBS.		125				

SYMBOL	TCI P/N
LR	KDRC21T
TR	KTR3B65HG
CAP. (3 KVAR)	KCAP3A6A
XFMR.	23896
Fu1, 2, 3	15752
Fu4,6	14106
Fu5	17567

TCI, LLC CLAIMS PROPRIETARY RIGHTS IN THE MATERIAL HEREIN DISCLOSED. IT IS SUPPLIED WITHOUT PREJUDICE TO ANY PATENT RIGHTS OF TCI AND MAY NOT BE REPRODUCED OR USED TO MANUFACTURE ANYTHING SHOWN THEREIN WITHOUT WRITTEN PERMISSION FROM TCI.				TOLERANCES (EXCEPT AS NOTED)	W132 N10611 Grant Drive Germantown, WI 53022 <b>HG10BW03ST, 10HP</b> <b>240/3/60 UL TYPE 3R</b>
				DECIMAL	
				.XX ±.12 .XXX±.06	
				FRACTIONAL ± 1/32	
	Δ 2641 ADD EYEBOLTS	10/13/09	DSW	ANGULAR ± 1/2°	DRN. BY DSW DATE 12/18/08 DWG. NO. 103655DG
	NO REVISION	DATE	BY		SCALE TO FIT SIZE C SHT.1 OF 1