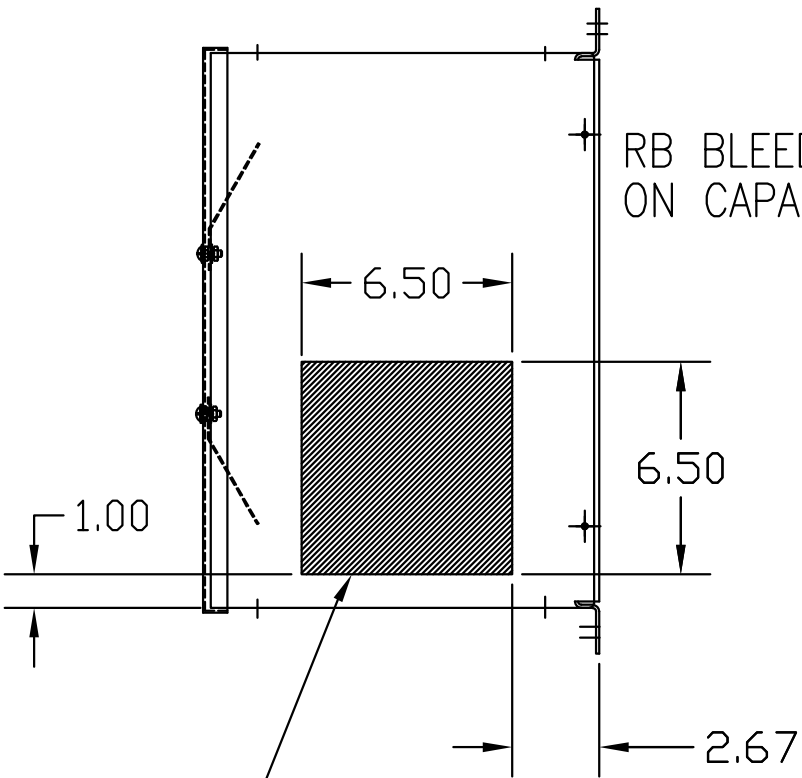
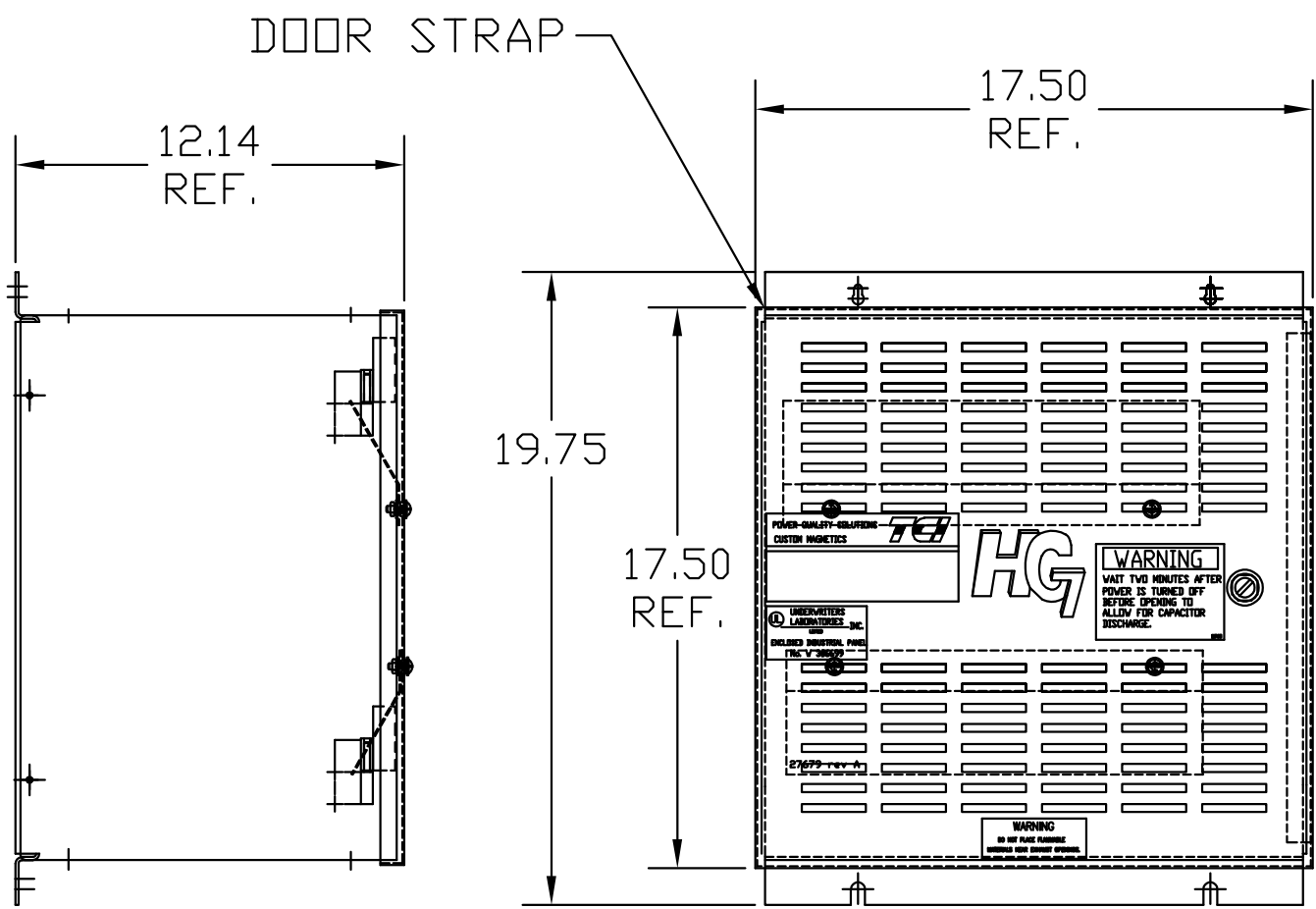
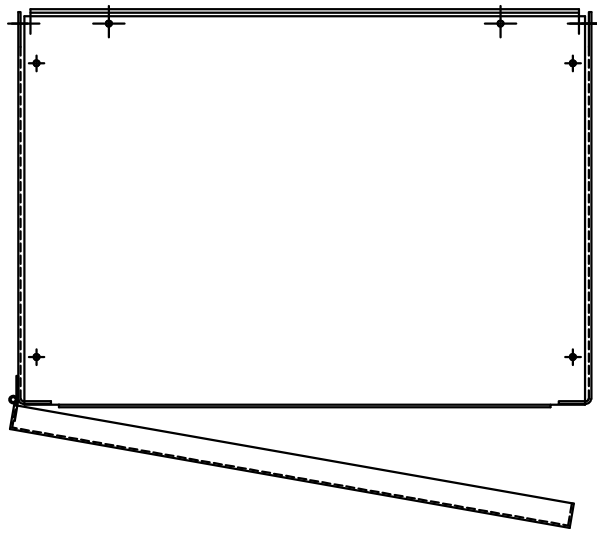
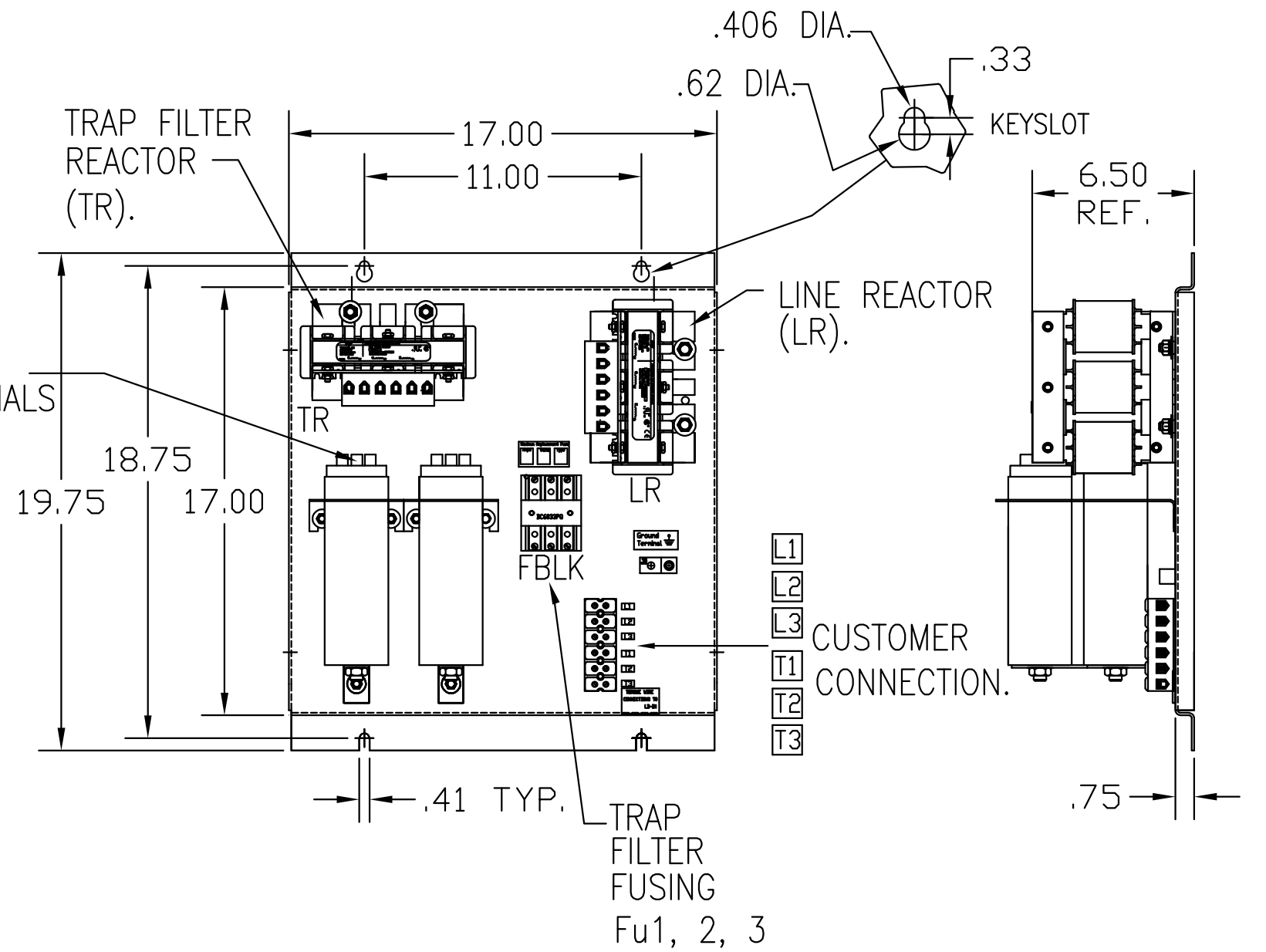
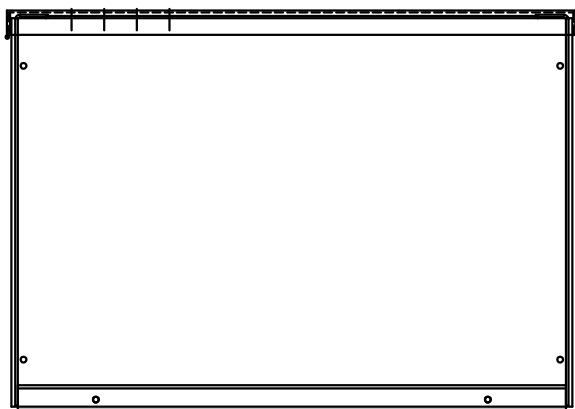


UNIT SPECIFICATIONS:					
KVAR HARMONIC	VOLT	HZ	PHASE	HP	
3	5TH	240	60	3	7.5
ENCLOSURE	NEMA 1				
APPROX.WT. LBS.	75				



HATCHED AREAS ARE SUGGESTED CUSTOMER WIRE AND EXIT LOCATIONS (BOTTOM ENTRANCE ALTERNATE-CONSULT TCI)



ENCLOSURE NOT SHOWN

SEE 25178 FOR SCHEMATIC

CUSTOMER IS RESPONSIBLE FOR INSTALLATION TO MEET ALL NATIONAL AND LOCAL ELECTRICAL CODES.

GROUND LUG:
WIRE RANGE-1/0 TO #14 AWG.

TORQUE:
#1/0-#2 AWG 50 IN-LB
#4-#6 AWG 45 IN-LB
#8 AWG 40 IN-LB
#10 -#14 AWG 35 IN-LB

PB-POWER INPUT BLOCK:
WIRE RANGE-#18 TO #4 AWG.
TIGHTENING TORQUE 20 IN-LB.

				TOLERANCES (EXCEPT AS NOTED)	TCI® W132 N10611 Grant Drive Germantown, WI 53022
				DECIMAL	
				.XX ±.02	HG8BW01ST, HG7 STANDARD 7.5HP, 240/3/60, TYPE 1
				.XXX±.01	
B	RVSD GRD. LUG & SPEC.	6/10/11	DSW	FRACTIONAL ± 1/32	DRN. BY DSW DATE 04/19/05 DWG. NO. 102503DG
A	MOVE POWER BLOCK	02/21/06	DSW	ANGULAR ± 1/2°	SCALE TO FIT APRVD. C
NO	REVISION	DATE	BY		SHT.1 OF 1