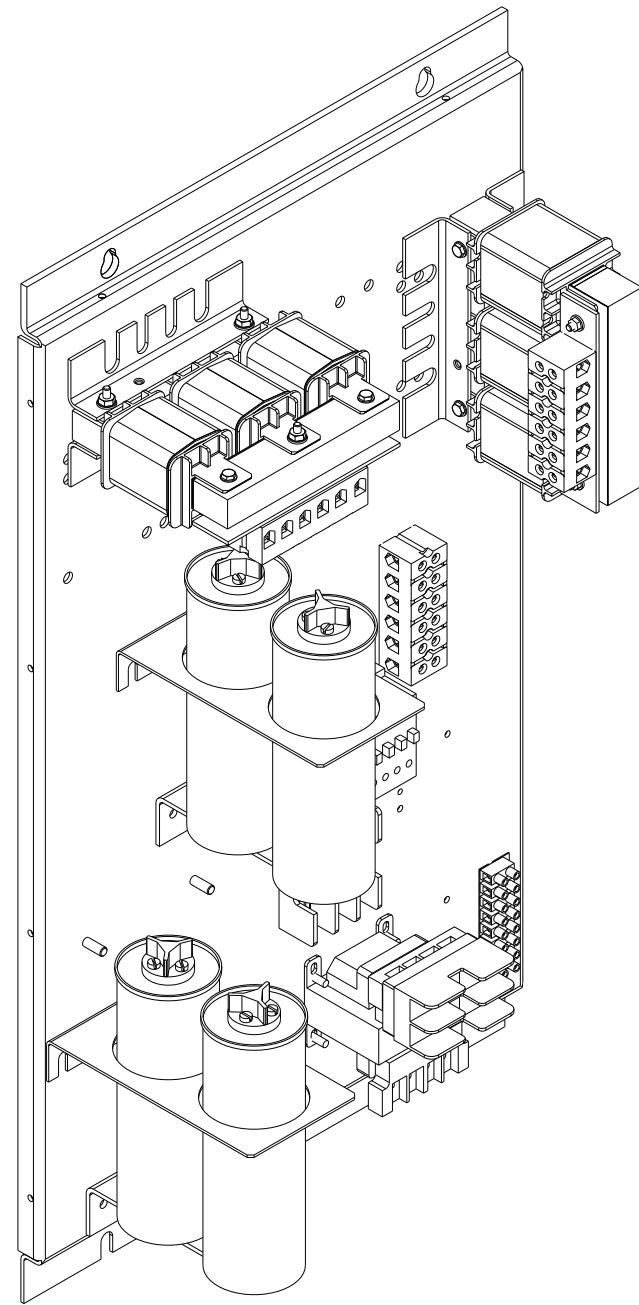
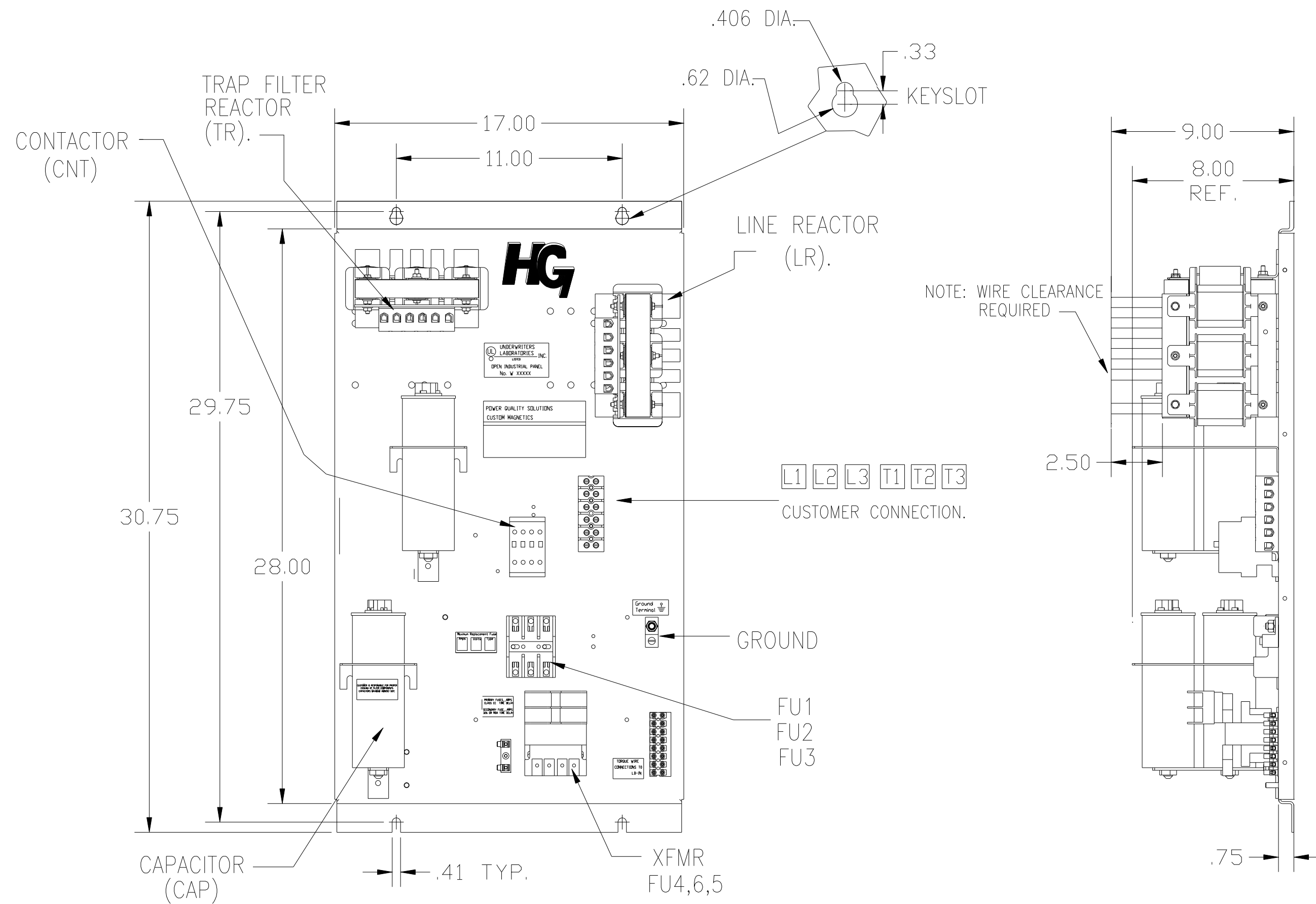


SEE 26822 FOR SCHEMATIC



PB-POWER INPUT BLOCK:  
WIRE RANGE-#18 TO #4 AWG.  
TIGHTENING TORQUE 20 IN-LB.

GROUND LUG:  
WIRE RANGE-1/0 TO #14 AWG.  
1/0 AWG thru 2 AWG 50 IN-LBS. MAX.  
4 AWG thru 6 AWG 45 IN-LBS. MAX.  
8 AWG 40 IN-LBS. MAX.  
10 AWG thru 14 AWG 35 IN-LBS. MAX.



UNIT SPECIFICATIONS:						
KVAR	HARMONIC	VOLT	HZ	PHASE	HP	
3	5TH	240	60	3	7.5	
ENCLOSURE		WHITE OPEN PANEL				
		WITH CONTACTOR				
APPROX.WT. LBS.		65				

SYMBOL	TCI PART NUMBER
LR	KDRC21T
TR	KTR3B65HG
CAP1,2,3,4	KCAP3A6A
XFMR.	23891
Fu1, 2, 3	15752
Fu4,6	24073
Fu5	13364
CNT	12434

CUSTOMER IS RESPONSIBLE FOR PROPER COOLING OF FILTER COMPONENTS. CAPACITORS MAXIMUM AMBIENT 50°C.

CUSTOMER IS RESPONSIBLE FOR INSTALLATION TO MEET ALL NATIONAL AND LOCAL ELECTRICAL CODES.

				TOLERANCES (EXCEPT AS NOTED)	7878 N. 86th STREET MILWAUKEE, WI 53224  <b>HG8BW00STC, 7.5HP</b> <b>240/3/60, OPEN, WITH CNT</b>
				DECIMAL	
				.XX ± .03 .XXX ± .01	
				FRACTIONAL ± 1/32	
				ANGULAR ± 1/2°	DRN BY DSW DATE 10/09/08 DWG. NO. 103599DG
NO	REVISION	DATE	BY	SCALE TO SCALE	AERVD. C SHT. 1 OF 1