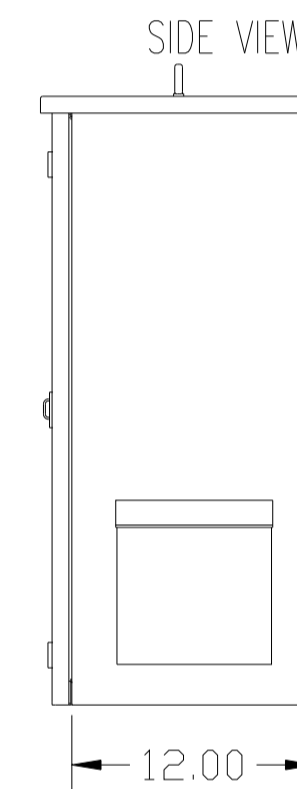
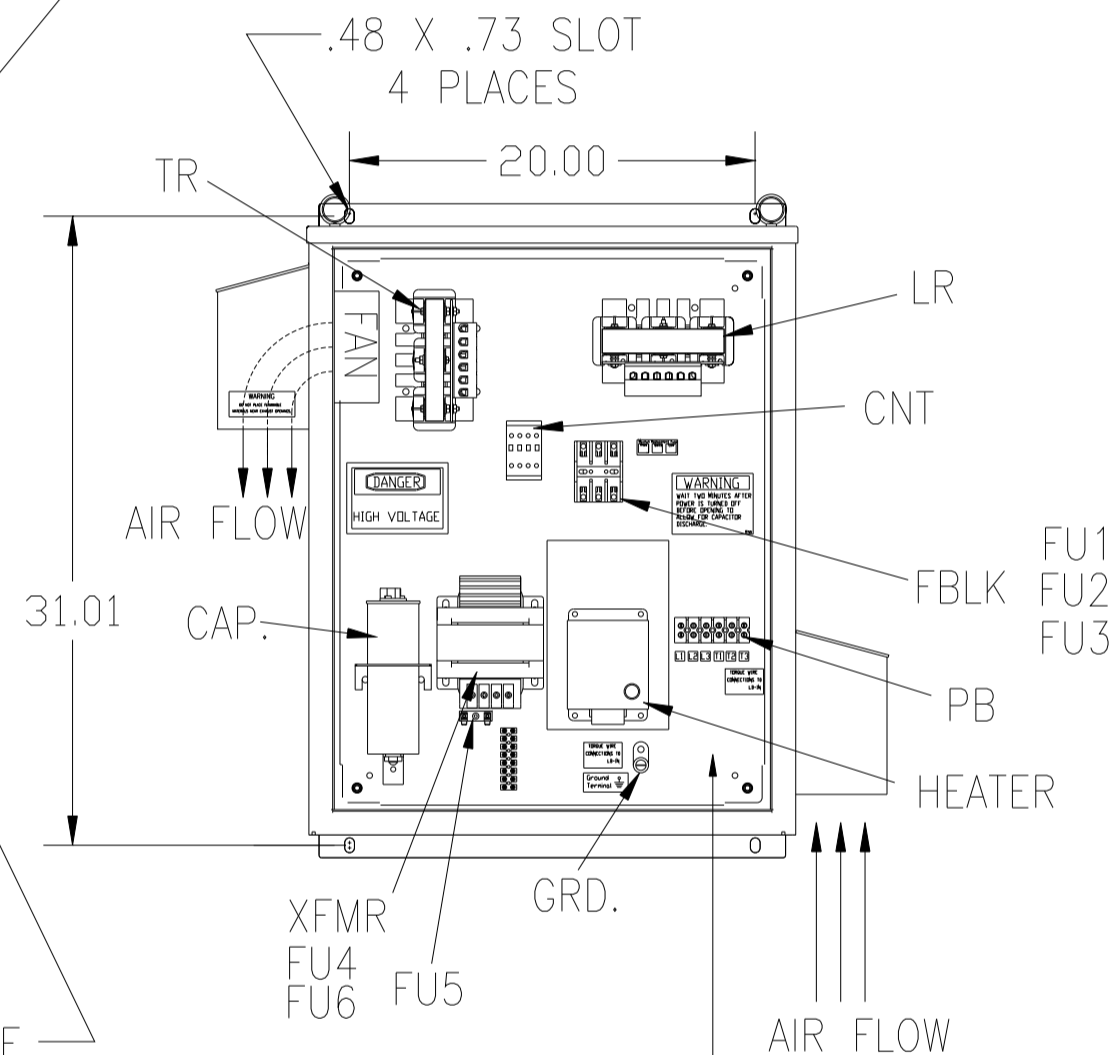
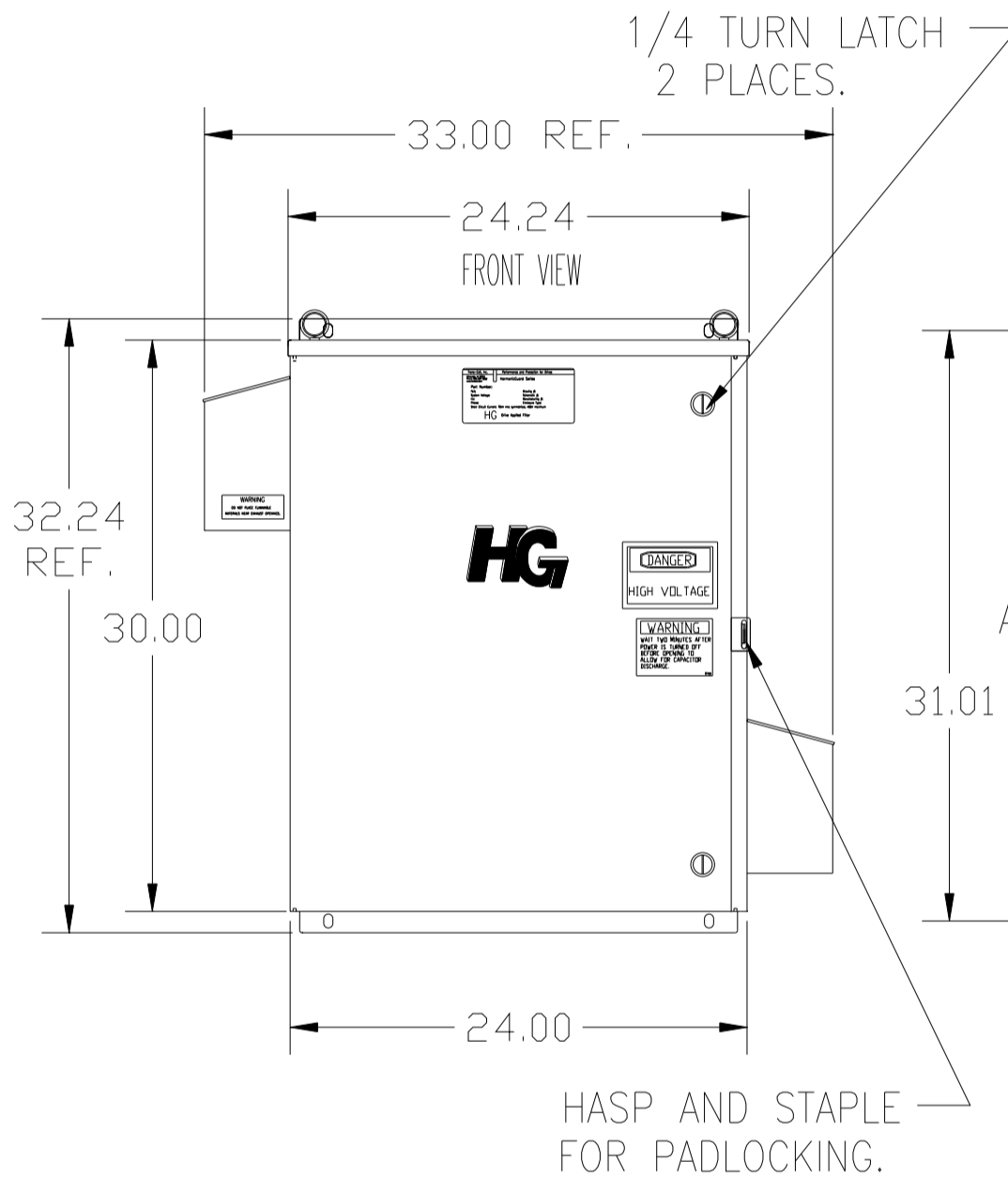
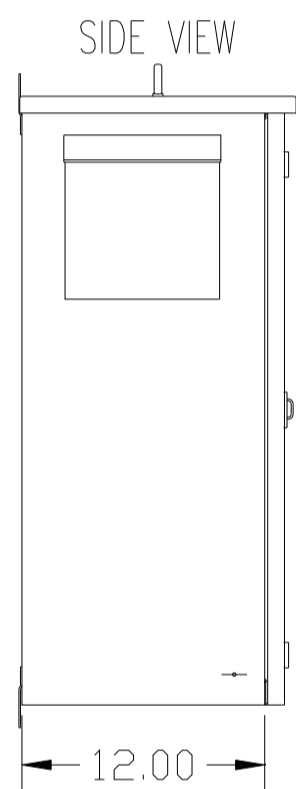
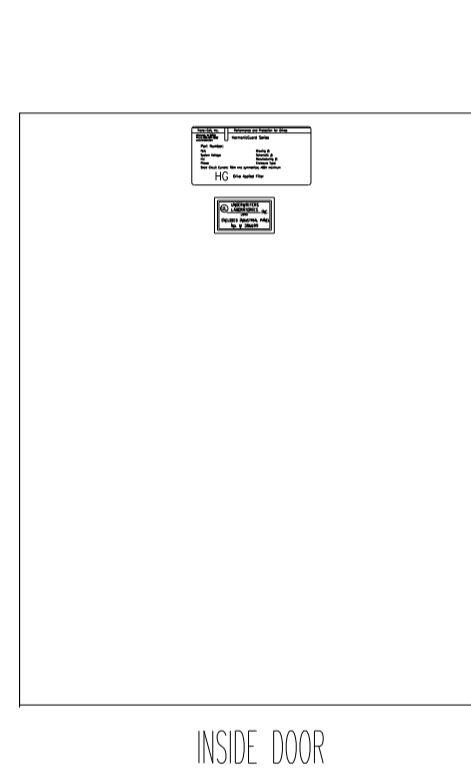
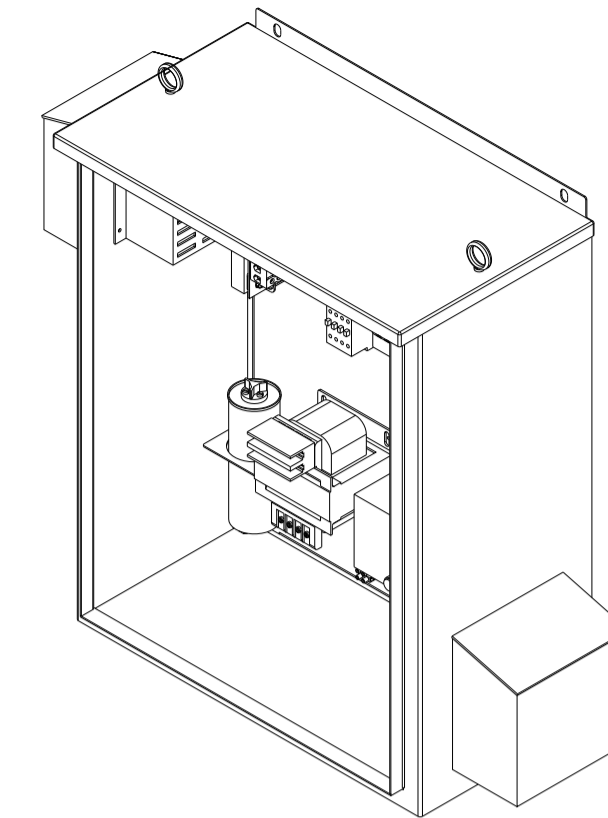
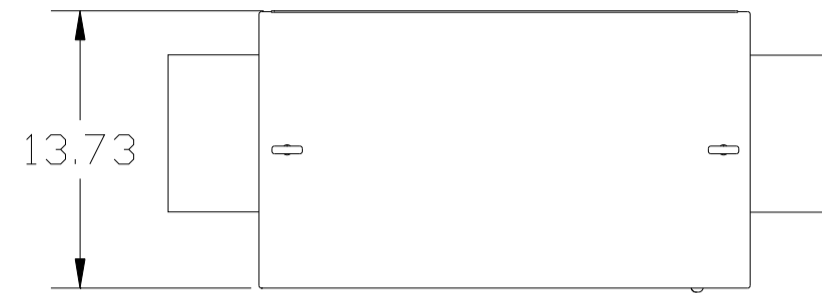
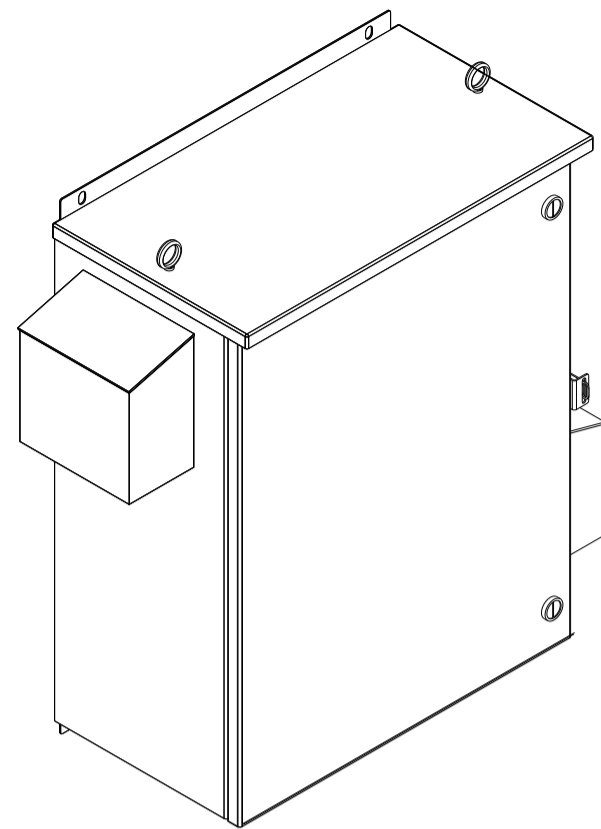


NOTE: USE ONLY HUBS OR FITTINGS THAT COMPLY WITH UL514B FOR TYPE 3R ENCLOSURES.

CUSTOMER IS RESPONSIBLE FOR INSTALLATION TO MEET ALL NATIONAL AND LOCAL ELECTRICAL CODES.

SEE DWG# 26750 FOR SCHEMATIC



L1 L2 L3 T1 T2 T3
SUGGESTED CUSTOMER WIRE ENTRY AND EXIT LOCATION

PB—POWER INPUT BLOCK:
WIRE RANGE—#18 TO #4 AWG.
TIGHTENING TORQUE 20 IN-LB.

GROUND LUG:
WIRE RANGE—1/0 TO #14 AWG.
TIGHTENING TORQUE 200 IN-LB.

UNIT SPECIFICATIONS:						
KVAR HARMONIC	VOLT	HZ	PHASE	HP		
3	5TH	480	60	3	7.5	
ENCLOSURE	UL TYPE 3R					
COLOR	WHITE					
APPROX.WT. LBS.	110					

SYMBOL	TCI PART NUMBER
LR	KDRC1T
TR	KTR3A65HG
CAP. (3 KVAR)	KCAP3A6A
XFMR.	23896
Fu1, 2, 3	11262
Fu4,6	24009
Fu5	17567
CNT	26739
HEATER (200 WATT)	11638

TOLERANCES (EXCEPT AS NOTED)		TCI		7878 N. 86th STREET MILWAUKEE, WI 53224	
DECIMAL	FRACTIONAL	DRN BY	DATE	DWG. NO.	SCALE
XX ±.12	± 1/32	DSW	8/20/08	103720DG	
.XXX ±.06	ANGULAR ± 1/2°	APRVD.		C	SHT.1 OF1
A 2641 ADD EYEBOLTS		REVISION	DATE	BY	
NO					